



THE Bulletin

May 2019 Volume 96, Number 5

**Come to the May 2nd
Town Hall on SDOH**

**Impacts of the CY
2019 MPFS Final Rule**

**Opioid Tool Kit –
Know More Genesee**

**Legal Advisor:
LARA's Authority
to Investigate
Medical Malpractice
Settlements**

**Flint Registry
Update (FLExR)**

GENESEE COUNTY MEDICAL SOCIETY

Organized Medicine's Leading Edge



Your one stop shop for all her breast health needs.

Everything your patient needs for optimal breast screening in one convenient package – 3D UltimateMamm®.

3D Mammography

Provides a better look at breast tissue by creating a circular image which can be viewed from many angles.

Breast Density

We measure the thickness of breast tissue so we can recommend the best screenings for every patient.

Risk Scoring

We ask questions to gauge the patient's overall predisposition for breast cancer using the Gail risk scoring system.

Lennon Rd, Flint | Villa Linde, Flint | Davison | Fenton | Grand Blanc
Lapeer | Novi | Royal Oak | Southgate



Genesee Area (810) 732-1919
Lapeer Area (810) 969-4700
Novi Area (248) 536-0410
Royal Oak Area (248) 543-7226
Southgate Area (734) 281-6600

THE BULLETIN is published monthly by
The Genesee County Medical Society.

ASSOCIATE EDITOR
Peter S. Thoms, MD

GCMS OFFICERS 2018-19
Ed Christy, MD
President

Asif Ishaque, MD
President Elect

Gerald Natzke, Jr, DO
Immed. Past Pres.

Qazi Azher, MD
Secretary

Ethiraj Raj, MD
Treasurer

MSMS OFFICERS 2018-19
S. Bobby Mukkamala, MD
Chair

John Waters, MD
Treasurer

DISTRICT DIRECTOR VI
S. Bobby Mukkamala, MD

DELEGATES

Qazi Azher, MD
Cathy Blight, MD
Laura Carravallah, MD
Ed Christy, MD
Pino Colone, MD
Niketa Dani, MD
Deborah Duncan, MD
Hesham Gayar, MD
John Hebert, III, MD
Rima Jibaly, MD
Nita Kulkarni, MD
Gerald Natzke, DO
Tarik Wasfie, MD

ALTERNATE DELEGATES

Khalid Ahmed, MD
Sherry Cavanagh, MD
Kiran Devisetty, MD
Asif Ishaque, MD
Sunil Kaushal, MD
Farhan Khan, MD
Sayed Osama, MD
Rama Rao, MD
Venkat Rao, MD
Lawrence Reynolds, MD
Brenda Rogers-Grays, MD
Robert Soderstrom, MD
Amanda Winston, MD

OTHER BOARD MEMBERS

Gary Johnson, MD
EXECUTIVE DIRECTOR
Peter A. Levine, MPH
EXECUTIVE ASSISTANT
Sherry Smith

This publication
designed and
edited by



www.natanskypublishing.com (248) 547-9749

May 2019 Volume 96, Number 5

THE Bulletin

Read by 96% of GCMS members.

FEATURE ARTICLES

Social Determinants of Health Town Hall	5
Impacts of the CY 2019 MPFS Final Rule	7
Legal Advisor: CASE LAW UPDATE: Court of Appeals Confirms LARA's Authority to Investigate Medical Malpractice Settlements	8
Practice Managers Meet With BCBSM	10
Obituary	11
Legislative Liaison Committee Discusses Health Can't Wait Campaign	14
Flint (Lead) Registry	16
Know More: About Opioid Addiction	18
Know More: Quick Reference Referral Guide	19
Suite A For Lease	24
Commit 2 Fit	26
GCMS Board of Directors Meeting Minutes	30

REGULARS

President's Message	4
Prior Authorizations, Opioid Tool Kit, And More!	6
GCMS Meetings	11
Happy Birthday Doctor	29
Your \$\$\$ at Work	29

Cover Photo: Cyrus Farrehi, MD

Our Vision

That the Genesee County Medical Society maintain its position as the premier medical society by advocating on behalf of its physician members and patients.

Our Mission

The mission of the Genesee County Medical Society is leadership, advocacy, education, and service on behalf of its members and their patients.

PLEASE NOTE

The GCMS Nominating Committee seeks input from members for nominations for the GCMS Presidential Citation for Lifetime Community Service. The Committee would like to be made aware of candidates for consideration.

THE BULLETIN

Published by the Genesee County Medical Society Publication Office
4438 Oak Bridge Drive, Suite B, Flint, Michigan 48532
Phone (810) 733-9923 Fax (810) 230-3737

By subscription \$60 per year. Member subscription included with Society dues. Contributions to

THE BULLETIN are always welcome. Forward news extracts or material of interest to the staff before the 5th of the month. All statements or comments in *THE BULLETIN* are the statements or opinions of the writers and are not necessarily the opinion of the Genesee County Medical Society.

Social Determinants Control 80% of Our Patient's Health

As physicians, we work so hard, to achieve a healthy state for our patients. We see them with a variety of diseases, and states of pre-disease health. Our training focuses on medical interventions. However, a relatively new concept is Social Determinants of Health. We now know that 80% of a person's health status is determined by factors that are not medical. It makes perfect sense that, in order to understand a person's health care needs, and their ability to care for themselves in the way that we prescribe or advise is with an understanding of their socioeconomic status, home environment, working environment, and every other factor. Are they living in a stressful, potentially unsafe neighborhood? Do they have to walk in the streets



Edward Christy, MD

during the winter because there are no sidewalks? Are they having trouble finding fresh foods? And on and on.

I would invite everyone to come to the May 2, GCMS Town Hall meeting on Social Determinants of Health. This will be a first-rate opportunity to learn about how these factors influence your patients, and your ability to achieve positive outcomes in your practice. This will involve a learning curve and a commitment on the part of your staff as well.

In the future, payments will be made based on outcomes. This is information

that will help you prepare, and maybe to achieve better outcomes in your practice.

We place your interests first and strive for your success and satisfaction above all.

Trust us to provide payment solutions to your payment challenges.

810.750.6822
mktg@TheRybarGroup.com
www.TheRybarGroup.com



HEALTHCARE FINANCIAL CONSULTANTS

The Genesee County Medical Society cordially invites you to a Quarterly Dinner Business Meeting

Sponsored by



and the MSU



Medical Community Town Hall

May 2, 2019

SOCIAL DETERMINANTS OF HEALTH WHAT IT MEANS TO YOU AND YOUR PRACTICE

Approximately 80% of health is determined by non-medical issues.

Those issues are called Social Determinants of Health. SDOH impacts your patient's ability to achieve positive health outcomes from your medical care interventions.

Outcomes will play a large part in how physicians are paid in the future.

This community is on the forefront of determining the best way to incorporate handling of SDOH into medical care and the practice of medicine. Come hear what to look for, what to do about it, how to intervene, how to communicate effectively, and how to improve outcomes of your medical interventions. You will also be brought up-to-date on what's going on locally to enhance the incorporation of SDOH into actual practice.

Traci Kim, MA, CMPE, Lecturer, Public Health and Health Sciences, University of Michigan - Flint, and Administrator of Complete Eye Care, what Social Determinants of Health means to your practice.

M. Susan Schneberger, LMSW, ACSW, JD, Senior Project Director, Genesee Children's Healthcare Access Program, speaking on the State Innovation Model, a detailed look at the data and the correction of negative curves.

Stacie Saylor, Michigan State Medical Society Reimbursement Ombudsperson.

Presenters:



Stacie Saylor



Traci Kim, MA, CMPE



Susan Schneberger, LMSW

Meeting Location:

Flint Golf Club
3100 Lakewood Drive
Flint, MI 48507

Evening Schedule:

6 pm, Registration & Social Hour
6:30 pm, Dinner
7 pm, Meeting
7:15 pm, Presentations

Please mail your reservation payment to:

Genesee County Medical Society
4438 Oak Bridge Drive, Suite B
Flint, MI 48532

Space is limited!

Please register by April 25, 2019

Please invite other physicians and practice managers to this meeting!
GCMS physicians, spouses, GCMSA, family members, practice staff
and other interested professionals are encouraged to attend!

\$40.00 – GCMS Members, Spouses, Practice Managers, & Staff

\$40.00 – Staff & Special Guests of Greater Flint Health Coalition

\$25.00 – Resident Physicians & Medical Students

\$75.00 – Non-Member Physicians, Spouses, Practice Managers, & Staff

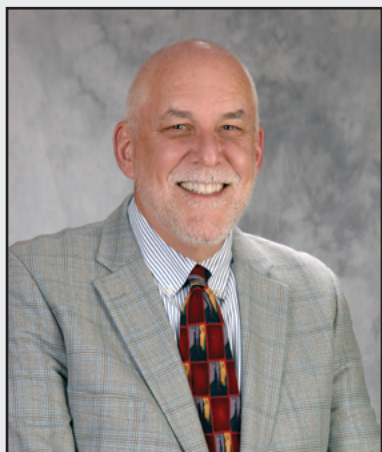
Email Sherry at ssmith@gcms.org to register your attendance or call 810-733-9923 for more information.



Prior Authorizations, Opioid Tool Kit, And More!

What are the two most common complaints from patients and physicians? They are prior authorizations and deductibles, by a long shot. For physicians and their practices, prior authorizing is a chaotic hassle factor and an access-to-health-care hazard to their patients.

Anyone involved in medical care knows that every insurance company has a different set of prior authorizations, each of which need to be dealt by following specific rules that are impossible to understand or to keep track of. Each insurance company puts out pages and pages of material about what is prior-authorized, at any one time, and how to deal with each prior-authorized code. When the GCMS practice managers meet, this is their biggest issue with each payer. They are almost in tears recalling the problems prior authorization issues create for patients and their families..



Peter Levine, MPH

MSMS, along with the county medical societies, are working together to create a movement to get the prior authorization mess cleaned up, standardized, rationalized and evidence-based. The goal is to reduce serious access problems caused by the prior authorizations crisis. MSMS is working with a coalition of organizations which are patient and provider-based called, Health Can't Wait. Meetings are being set up with legislators so that patients, physicians, and practice managers can explain the length and breadth of the problems associated with the prior authorization environment. You may be called upon to participate. Please take advantage of the opportunity. This is a big deal.

This issue is packed with information, some of which you requested, and some of which is of value even though you didn't request it.

At the Town Hall on the New Opioid Laws, a

CONTINUED ON PAGE 7

Executive

CONTINUED FROM PAGE 6

survey was performed regarding what physicians, nurse practitioners, PFAS, and others would like to have in an opioid tool kit. GCMS worked with the Greater Flint Health Coalition to develop a tool kit based on those requests. We have included material in this issue of The Bulletin from the Tool Kit. But please remember, this is material for use in your practice and was identified as being important by your peers. The packet contains prescribing guidelines for acute care, prescribing guidelines for chronic pain what, what you need to know about prescription opioids, a document for patients called, "Managing Your Pain, Which Approach Is Right For You?" a prescribing checklist for controlled substances, a quick reference referral guide for substance abuse treatment, and finally opioid legislation frequently asked questions. We will make this available to you electronically, and in hardcopy. Contact Sherry at 810-733-9923 or ssmith@gcms.

org, then stop by the office to pick them up. There is also a fantastic website called, "Know More About Opioid Addiction: Genesee County Opioid Prevention Project." This website will be updated as information changes. It is a one-stop location for resources, prescribing guidelines, legislation updates, education and prevention. There is also information on the website about becoming a medication-assisted treatment provider. The website address is <https://knowmoregenesee.org/>

In addition, this issue contains critical information about the Flint Lead Registry (FLExR). You'll be hearing more about that. It provides a great opportunity for your patients to find out about services available to them, if they spent any time in Flint during the water crisis.

GCMS resolutions for the MSMS House of Delegates also appear in this issue of The Bulletin. By the time you read this, your delegation will be in Kalamazoo representing you on issues import to the practice of medicine.

Impacts of the CY 2019 MPFS Final Rule

Julie Hardy, MSA, RHIA, CCS-P, CCS, The Rybar Group, Director Revenue Integrity and Payment

When the CY 2019 Medicare Physician Fee Schedule (MPFS) final rule was published in November of last year, a lot of questions were answered about the future of physician reimbursement, and especially evaluation and management (E/M) codes, which are reported by nearly all providers of all specialties.

CMS officially announced the streamlining of E/M codes with their update in the fall. This means that as opposed to five levels with five separate payment rates,

there will be four levels with two separate payment rates. It appears as though level 1 visits for both new and established patients will be eliminated. Levels 2-4 will be reimbursed at the same rate, though the correct E/M code to support the service will still need to be billed, and the highest level service will remain with a separate payment rate.

Though things may change between now and the finalization of the CY 2021 MPFS, CMS published an "E/M Payment Amounts" chart, which reveals the following:

		2019 Payment	2021 Proposed	With add-on	With extended services	With add-on and extended services
New Patients	99202	\$77	\$130	\$143	\$197 (at 38 mins)	\$210
	99203	\$110				
	99204	\$167	\$211			
	99205	\$210				
Established Patients	99213	\$75	\$90	\$103	\$157 (at 34 minutes)	\$170
	99214	\$110				
	99215	\$145	\$148			

While actual amounts will vary based on fee schedule adjustments in the coming year, the above table is a good reference point for providers to begin an analysis of how these payments are going to impact their practices.

For example, when reviewing billing data of new patients over the past year, if you have 60% billed at a level 3 and 25% billed at level 4, you'll actually see

a slight increase in revenue. However, if you tend to see more complex patients and bill at higher levels, you're more likely to see a negative revenue impact.

It's important to keep in mind that, for now, these changes only affect office visits, not hospital-based services.

For questions or assistance with an impact analysis, contact Julie Hardy at jhardy@theybargroup.com or 810-853-6171.



The world needs more people who are committed enough to say YES.

Yes believes in possibility. Yes gives people a chance. Yes can turn thoughts and plans into life-changing actions. Sovita Credit Union serves Education and Healthcare Workers, their Families and their Communities.

Join today. sovitacu.org



CASE LAW UPDATE: Court of Appeals Confirms LARA's Authority to Investigate Medical Malpractice Settlements

By R. Paul Vance

The Court of Appeals recently issued a published opinionⁱ involving a decision made by the Department of Licensing and Regulatory Affairs (LARA) to investigate a periodontist's medical malpractice settlement.ⁱⁱ

The facts of the case are straightforward. Dr. Kazor, a periodontist, settled a malpractice claim brought against him by a former patient. Importantly, Dr. Kazor did not admit liability in settling the case. Thereafter, the National Practitioner Data Bank (NPDB) reported to LARA that Dr. Kazor's insurance carrier paid a malpractice settlement to one of Dr. Kazor's patients. LARA then forwarded the report to the Board of Dentistry, which authorized an investigation into whether Dr. Kazor violated the Public Health Code (the Code). See, *Kazor v Department of Licensing and Regulatory Affairs, Bureau of Professional Licensing*, 2019 WL 1266854 at *1.

Thereafter, LARA informed Dr. Kazor that it had initiated an investigation against him to determine his compliance with the Code and requested that Dr. Kazor provide it with the non-redacted dental records of the patient with whom he had settled. In response, Dr. Kazor filed a lawsuit against LARA and the Board of Dentistry in the Court of Claims. Dr. Kazor's lawsuit sought a ruling from the Court that LARA was not authorized to undertake an investigation based solely on a NPDB report of the malpractice settlement. The Court of Claims dismissed Dr. Kazor's lawsuit and he appealed the ruling. *Id.*

In upholding the ruling from the Court of Claims, the Court of Appeals noted that the Code provides that if LARA determines, after reviewing an application, or an allegation, or a licensee's file, that there is a reasonable basis to believe that a violation of the Code occurred, it is required to take certain actions.ⁱⁱⁱ *Id.* at *3. These required actions include a review of the entire file of a licensee with respect to whom there is a report of an adverse malpractice settlement, award, or judgment.^{iv}

The Court of Appeals determined that under the Code, Dr. Kazor received an "adverse malpractice settlement"

because he entered into a settlement with his former patient with respect to a claim of malpractice, agreeing to pay the former patient a sum of money. *Id.* As such, the Court of Appeals stated that LARA was required to review Dr. Kazor's entire file. It is important to note that the portion of the Code at issue does not reference any particular settlement amount that renders a settlement an "adverse malpractice settlement." *Id.* Instead, it simply states that when there has been an adverse medical malpractice settlement, LARA "shall" promptly review the licensee's entire file.^v

If after reviewing Dr. Kazor's file LARA determined that there was a reasonable basis to believe that a violation of certain Code provisions occurred, then, "with the authorization of a panel of at least 3 board members that includes the chair and at least 2 other members of the appropriate board or task force designated by the chair, the department shall investigate the alleged violation."^{vi} *Id.* Thus, under the facts of this case,

CONTINUED ON PAGE 9





90 YEARS OF EXCELLENCE
ESTABLISHED 1928

Business Law • Employment Law • Insurance Defense
General Litigation • Medical Malpractice • Municipal Law
Probate, Estate and Elder Law Real Estate
Wealth Transfer • Workers' Compensation

Walter P. Griffin • Timothy H. Knecht • Jose T. Brown • J. Brian MacDonald
R. Paul Vance • Megan R. Mulder • Nancy K. Chinonis • Eric M. Froats

TRUST EXPERIENCE. COUNT ON COMMITMENT.

Attorneys at Law | Since 1928 | www.ccglawyers.com | 810.232.3141

Legal Advisor

CONTINUED FROM PAGE 8

it appears that after reviewing Dr. Kazor's file,

LARA determined there was a reasonable basis to believe he committed a violation and forwarded the information to the Board of Dentistry, which authorized an investigation. LARA was thereafter required to investigate under the terms of the Code.^{vii}

The Court of Appeals then went on to discuss LARA's broad discretionary authority to investigate the activities related to the practice of a health profession by a licensee. *Id.* at *4. The Court of Appeals stated that although LARA received the information regarding its belief that Dr. Kazor violated a provision in the Code through a NPDB report of the malpractice settlement, that did not mean that LARA determined the settlement itself justified the investigation. *Id.*

Rather, as the Court of Appeals noted, LARA could have determined that the facts underlying the allegations of malpractice – and not the settlement itself – led to a reasonable belief that Dr. Kazor violated the Code and prompted its investigation. *Id.*

In short, the Michigan Court of Appeals has determined that LARA's authority to investigate malpractice settlements is extremely broad. The Court of Appeals decision in *Kazor* makes clear that LARA has the authority to initiate an investigation of a single medical malpractice settlement reported by the NPDB, and/or the underlying facts leading to the settlement, regardless of the amount of the settlement or a denial of liability.^{viii}

If you have been contacted by LARA for a copy of a patient's file, for an interview, or if you have been served with an Administrative Complaint, please contact an experienced attorney to help you navigate through the process and protect your interests. The earlier the attorney is involved, the better they will be able to assist you.

If you have any questions, please feel free to contact the author, R. Paul Vance of Cline, Cline & Griffin, P.C. at rvance@ccglawyers.com or by calling the office at 810-232-3141.

i Under MCR 7.215(C)(2), "[a] published opinion of the Court of Appeals has precedential effect..."

ii *Kazor v Department of Licensing and Regulatory Affairs, Bureau of Professional Licensing*, ___ Mich App ___, ___ N.W.2d ___; 2019 WL 1266854, (Docket No. 343249).

iii MCL 333.16231(2).

iv MCL 333.16211(4).

v "Shall" indicates a mandatory directive. See, e.g. *People v Lockridge*, 498 Mich 358, 387, 870 N.W.2d 502 (2015).

vi MCL 333.16231(2)(a) (emphasis added).

vii MCL 333.16231(2); See also, *In re Petition of Attorney General for Subpoenas*, ___ Mich. App. ___, ___ N.W.2d ___, 2019 WL 942947 (Docket No.'s 342086 & 342680 2019).

viii See also, MCL 333.16231(2)(a); MCL 333.16221.

Your HEALTH CARE LAW FIRM



Wachler & Associates represents healthcare providers, suppliers, and other individuals in Michigan and nationally in all areas of health care law, including:

- Provider Contracting
- RAC, Medicare, Medicaid and Commercial Payor Audits
- Billing and Reimbursement
- Stark Law, Anti-Kickback Statute, and Fraud & Abuse Compliance
- Licensure, Staff Privilege and Credentialing
- Physician and Physician Group Issues
- Corporate and Transactional Matters
- Regulatory Compliance
- Healthcare Litigation
- Healthcare Investigations
- Fraud and False Claims Defense
- Provider Participation/Termination Matters
- HIPAA and HITECH Compliance



SERVING HEALTHCARE PROVIDERS FOR OVER 30 YEARS

248.544.0888 • wachler.com



BCBSM: Prior Authorizations, E-Referrals and Utilization Management

The focus of the April practice managers meeting was a discussion with Blue Cross Blue Shield of Michigan. The representatives from Blue Cross were Donna LaGosh, Manager of the PGIP Field Team and Director of Provider Outreach. BJ Byers, Manager Provider Outreach, and Tina Gach. Participating via telephone, was a representative from AIM, the BCBSM vendor for administration of prior authorizations.

Before they began discussions, Peter Levine reviewed several issues that the Medical Society is involved with that would be a value to practices. He described the Michigan State Medical Society initiative intended to make prior authorizations more rational. He explained where the no-fault auto issue is in the legislature now. He described the importance of the upcoming Town Hall on Social Determinants of Health. He explained that the Medical Society Board is holding this session is to prepare physicians for transitioning to a method of payment based on outcomes as opposed to tasks performed. He also described a newly developed Opioid Tool Kit being prepared by the Medical Society and the Greater Flint Health Coalition Mental Health and Substance Abuse Task Force. He gave an update on the Lead Registry as well.

Ms. LaGosh discussed prior authorizations and e-referrals. She reviewed a summary of utilization management dated August 2018. This document reviewed each area of prior authorization and explained what needs to be prior authorized by each Blue Cross entity. She explained the differences between Blue Care Network and Blue Cross Blue Shield prior authorization systems. She reviewed a takeaway sheet of key points for submitting prior authorizations. She noted that a lot of the problems with the AIM pages have been fixed. She noted that, to use the Blue Care Network side of the Blue Cross prior authorization system, a practice needs to sign up for it. It was noted by the practice managers that

none of them are having problems with the AIM system.

Ms. LaGosh reviewed the new servicing model for Provider Outreach. It is focusing on linking the benefit of the provider, the customer and the member. She is focused on breaking down silos so messages can be consistent and clear. Provider Relations will be focusing on complex process fixes which will impact everyone. She suggested the development of a focus group of local practice managers who can help with this process. Volunteers were solicited.

Practice Managers also presented specific areas of concern, such as hold times of up to 2½ hours on the Provider Automated Response System. Practice managers proposed some changes. They also noted problems with some of the provider reps. They asked to have loops closed on the problems presented. There was strong criticism of Anthem.

A follow-up visit from Ms. LaGosh will take place in November.

The practice managers group discussed how costs are being shifted to physician offices via the prior authorization process. The results are that patient care is delayed with higher risk and higher cost. They agreed to work on the MSMS Health Matters initiative.



OBITUARY

Douglas VanBrocklin, MD



Dr. Douglas VanBrocklin passed away on March 30 at the age of 80. He is survived by his wife, Peggy.

Dr. VanBrocklin was born in 1938 in Owosso, Michigan. He attended school in Owosso participating in band (playing the trumpet) and sports, including tennis, football and wrestling. He graduated from Owosso High School in 1956 and subsequently attended the University of Michigan where he played trumpet in the Michigan Marching Band.

Upon completing undergraduate studies, he attended Medical School at the University of Michigan, Graduating in 1963 with a MD degree. He interned in Traverse City, Michigan for one year before being drafted into the U.S. Navy at the start of the Vietnam conflict. He spent two years on active duty, primarily in Norfolk, VA on the destroyer John Paul Jones. Upon discharge in 1966, he began practicing Medicine in Allegan, Michigan and returned to U of M for specialty training. In 1968, he began practicing Medicine at General Motors, initially as an Assistant Medical Director at AC Spark Plug in Flint, Michigan. He was promoted to Regional Medical Director for Northern Michigan plants after five years. During this time, he returned to U of M to get his Master's Degree in Public Health. His next promotion was to the Medical Director of all of General Motors, assuming the responsibility of 100 doctors and 650 nurses across the United States. He was again promoted to Director of Health and Safety for GM Worldwide; a position he held until his retirement in 1999. During his medical career, he was on staff at Hurley Medical Center, McLaren Hospital and St. Joseph Hospital in the Flint area.

Dr. VanBrocklin was a member of the Genesee County Medical Society, Michigan State Medical Society, Genesee County Out Patient Association, and the Michigan Occupation and Environmental Medical Association, having served as President in 1985.

He ran marathons as a hobby. Other hobbies included working with stained glass, playing tennis, and skiing.



GCMS MEETINGS

MAY 2019

Social Determinants of Health GCMS Town Hall, 5/2

6:00pm, Flint Golf Club *see page 5

Legislative Liaison Committee, 5/6

8:00am, GCMS Office

Practice Managers, 5/9

8:00am, GCMS Office

2019 Ball Committee, TBD

3:30pm, GCMS Office

Community & Environmental Health Committee, 5/22

12:30pm, GCMS Office

Finance Committee, 5/28

5:15pm, GCMS Office

Board of Directors, 5/28

6:00pm, GCMS Office

ATTENTION: GCMS Practice Managers

Issues of Serious Concern for Medical Practices!

Don't let your practice manager miss these important meetings!

CMS Practice Manager meetings are held on the 1st Thursday of each month from 8am to 10am

The following topics are tentatively scheduled and subject to change

<p>May 9, 2019 Presenter(s)</p>	<p>"Meridian Health Plan" (second Thursday) Amanda Herr, Network Development Representative Kristen Gasieski, Manager Network Development</p>
<p>June 6, 2019 Presenter(s)</p>	<p>"Health Alliance Plan" Deborah Spencer, Assistant Vice President, Provider Services</p>
<p>July 4, 2019</p>	<p>No Meeting - Enjoy Your Holiday and Happy Summer!</p>
<p>August 1, 2019 Presenter(s)</p>	<p>"Prior Authorization - What is Working, What is Not" Stacie Saylor, CPC, CPB Manager, Reimbursement Advocacy, Michigan State Medical Society</p>
<p>September 5, 2019 Presenter(s)</p>	<p>"McLaren Health Plan" Amy Weigandt, Network Development Coordinator Candy Gilbert, Network Development Supervisor</p>
<p>October 3, 2019 Presenter(s)</p>	<p>"What's New with MIPS" TBD</p>

Please email Sherry at ssmith@gcms.org or call 810-733-9923 to RSVP!

Genesee County Medical Society - The Rapport Conference Room
4438 Oak Bridge Drive, Suite B, Flint, MI 48532.

The Genesee County Medical Society cordially invites you to a Quarterly Dinner Business Meeting

Sponsored by



and the MSU



Medical Community Town Hall

May 2, 2019

SOCIAL DETERMINANTS OF HEALTH WHAT IT MEANS TO YOU AND YOUR PRACTICE

Approximately 80% of health is determined by non-medical issues.

Those issues are called Social Determinants of Health. SDOH impacts your patient's ability to achieve positive health outcomes from your medical care interventions.

Outcomes will play a large part in how physicians are paid in the future.

This community is on the forefront of determining the best way to incorporate handling of SDOH into medical care and the practice of medicine. Come hear what to look for, what to do about it, how to intervene, how to communicate effectively, and how to improve outcomes of your medical interventions. You will also be brought up-to-date on what's going on locally to enhance the incorporation of SDOH into actual practice.

Traci Kim, MA, CMPE, Lecturer, Public Health and Health Sciences, University of Michigan - Flint, and Administrator of Complete Eye Care, what Social Determinants of Health means to your practice.
M. Susan Schneberger, LMSW, ACSW, JD, Senior Project Director, Genesee Children's Healthcare Access Program, speaking on the State Innovation Model, a detailed look at the data and the correction of negative curves.
Stacie Saylor, Michigan State Medical Society Reimbursement Ombudsperson.

Presenters:



Stacie Saylor



Traci Kim, MA, CMPE



Susan Schneberger, LMSW

Meeting Location:

Flint Golf Club
3100 Lakewood Drive
Flint, MI 48507

Evening Schedule:

6 pm, Registration & Social Hour
6:30 pm, Dinner
7 pm, Meeting
7:15 pm, Presentations

Please mail your reservation payment to:
Genesee County Medical Society
4438 Oak Bridge Drive, Suite B
Flint, MI 48532

Space is limited!

Please register by April 25, 2019

Please invite other physicians and practice managers to this meeting!
GCMS physicians, spouses, GCMSA, family members, practice staff
and other interested professionals are encouraged to attend!

\$40.00 – GCMS Members, Spouses, Practice Managers, & Staff
\$40.00 – Staff & Special Guests of Greater Flint Health Coalition
\$25.00 – Resident Physicians & Medical Students
\$75.00 – Non-Member Physicians, Spouses, Practice Managers, & Staff

Email Sherry at ssmith@gcms.org to register your attendance or call 810-733-9923 for more information.



The Legislative Liaison Committee Discusses Health Can't Wait Campaign

The Legislative Liaison Committee at its April meeting discussed the Health Can't Wait, prior authorization campaign with Christin Nohner, MSMS state and federal government relations director. The campaign aims to have patients tell their stories about the health impact of prior authorization. Patients and physicians will work together to highlight the urgent need for a patient-centered approach to health care reports the needs of patients above those of insurers.

The meeting was attended by Drs. Cathy Blight, Rachel Young, Niketa Dani, Paul Lazar, Deborah Duncan, and John Waters. Gary Paavola and Pete Levine were also in attendance.

The May session will focus on actions taken at the House of Delegates that are likely to result in legislative initiatives. There will be no meeting in September or July. During the summer, the Committee will meet with Congressman Dan Kildee for a Washington Update.

Announcement

GCMS members now entitled to a 15% discount on automobile and homeowners insurance.

For details, contact:

**POTTER & ROOSE
INSURANCE**

810-767-8590

Providers of insurance for the GCMS & its members for 50 years.

906 Mott Foundation Bld., Flint MI 48502

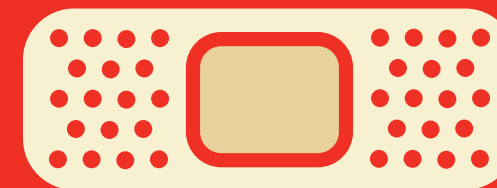


Equals make

THE BEST PARTNERS.

We're taking the mal out of malpractice insurance.

As a company founded and led by doctors, we know what keeps you up at night. It's why we partner with practices of all sizes to help manage the complexities of today's healthcare environment and reward the practice of good medicine. Because when you have a partner who's also a peer, you have malpractice insurance without the mal. Join us at thedoctors.com



 **THE DOCTORS COMPANY**
medical malpractice insurance

A RESOURCE FOR YOUR PATIENTS



Get Connected. Get Supported. Get Counted.

flintregistry.org

The Flint Registry is a resource to see how the people of Flint are doing and provide support for those impacted by the water crisis. After completing a survey, individuals are referred to services that promote health and development such as education, health and nutrition programs. Support, especially for children, includes referral to Genesee Health System Neurodevelopment Center of Excellence – a new, no-cost child development assessment center.

The Flint Registry is modeled after other public health registries like the World Trade Center Disaster Registry. The Flint Registry is for anyone who was exposed to lead-contaminated water because they worked, lived, went to school, or daycare identified as an address on the Flint water system from **April 25, 2015 – October 15, 2015**, including children who were prenatally exposed. The Flint Registry is for all ages.

Want to learn more? Visit our website at flintregistry.org or call 833-GO-FLINT.

WHAT IS THE LOGO ALL ABOUT?



The logo represents the Sankofa bird, a mythical African bird from the Akan tribe in Ghana. The bird is flying forward, yet looking back, and carrying an egg in its mouth. It is symbolic of always needing to move forward, but never forgetting what happened in the past, and prioritizing the young. The logo suggestion was made by a Flint resident.

FLINTREGISTRY



**Get Connected.
Get Supported.
Get Counted.**

People who used Flint water from April 25, 2014 to October 15, 2015 can participate in a voluntary secure registry that will refer them to programs and other resources aimed at minimizing the effects of lead on their health, while promoting wellness and recovery.

SIGN UP TODAY!

Visit

**www.flintregistry.org
or call 833-463-5468**



Michigan State University College of Human Medicine received funding for this work from the Centers for Disease Control and Prevention (CDC), Grant #NUE2EH001370.



FLINTREGISTRY

Get Connected. Get Supported. Get Counted.

flintregistry.org



ABOUT OPIOID ADDICTION
Genesee County Opioid Prevention Project








Dear Medical Professionals,

The Genesee County Medical Society and the Greater Flint Health Coalition's Mental Health & Substance Use Task Force would like to present you with the Genesee County Opioid Prescriber Toolkit. The Toolkit was designed to support a community-wide strategy to address the opioid epidemic in Genesee County.

The healthcare community plays a critical role in addressing the opioid epidemic and has an opportunity to make a difference. Genesee County providers have expressed an interest in additional resources to help navigate substance use treatment options for their patients. This Opioid Prescriber Toolkit is intended to serve as a resource for you to treat and support your Genesee County patients with pain or substance use issues.

Please take a moment to review the Genesee County Opioid Prescriber Toolkit, as well as the expanded online Toolkit with additional resources at www.KnowMoreGenesee.org.

The Toolkit contains:

-  Quick Reference Referral Guide for Substance Use Treatment
-  Opioid Legislation FAQs
-  Prescribing Checklist for Controlled Substances
-  Acute Care Prescribing Recommendations
-  Chronic Pain Prescribing Recommendations
-  Prescription Opioids: What You Need to Know
-  Alternative Approaches to Managing Pain

The online Toolkit incorporates additional information to support providers in the treatment and support of their patients. It includes information on how to become a Medication-Assisted Treatment (MAT) provider, as there is a great need for additional MAT providers in Genesee County. Detailed information regarding opioid legislation and the use of the Michigan Automated Prescription System (MAPS) is available, along with specific opioid prescribing guidelines and educational resources for both acute and chronic pain prescribers. At the request of local providers, the online Toolkit also contains information on alternatives to opioid prescribing and proper disposal of opioid prescriptions.

As a medical professional we hope that you find this information useful as you continue to serve your patients with the utmost compassionate care.

Sincerely

Kirk Smith, MHSA
President & CEO
Greater Flint Health Coalition

Edward A. Christy, MD, FACP
President
Genesee County Medical Society



GREATER FLINT HEALTH COALITION



KnowMoreGenesee.org

April 2019

Quick Reference Referral Guide for Substance Use Treatment

KnowMoreGenesee.org



ABOUT OPIOID ADDICTION
Genesee County Opioid Prevention Project



As a Genesee County provider encountering changes in legislation regarding utilization of the Michigan Automated Prescription System (MAPS), and navigating the substance use treatment system with your patients, the Greater Flint Health Coalition and its Mental Health & Substance Use Task Force offer this referral guide as an introductory resource.

The First Step: Accessing Substance Use Treatment

- 1** If an individual has **Medicaid, is uninsured, and/or has general questions**, they may call or visit (during business hours) **the Genesee Health System Access Center** at:

 - 810-257-3740 (crisis line available 24/7)
 - TTY 810-232-6310
 - Toll-Free 877-346-3648
 - 420 W. Fifth Avenue, Flint, MI 48503 – Open Monday through Friday, 8 a.m. to 5 p.m.

Please have the following information available when calling to expedite the process:

 - Name, date of birth, social security number
 - Medical insurance card or numbers, including Medicaid (if applicable)
 - Names of current medicines and doctors
- 2** If an **individual has insurance other than Medicaid**, call the insurance plan directly to determine covered services and providers.

 - Guardianship or court papers (if applicable)
 - Special education or other school records (if applicable)
 - Drug (quantity, frequency)
 - Services needed (detox, inpatient, outpatient)

Fees for services are based on a person's ability to pay; therefore, staff will need to know the household income and number of dependents of the person seeking help. A coverage determination will be made at the time of the screening. Staff will let you know if you can expect to have any cost for your services. No one will be denied services based on their inability to pay.

Substance Use Treatment Centers in Genesee County and Surrounding Areas

GENESEEE COUNTY RESIDENTIAL CENTERS

Above the Water House

4105 Keyes Street, Flint, MI 48504
(810) 877-2907

Women's recovery housing for females with addiction/alcoholism with mild to moderate psychological impairments.

Flint Odyssey House

529 M.L. King Avenue, Flint, MI 48503
(810) 238-5888

Medication assisted treatment, withdrawal management, long-term residential treatment, outpatient services, recovery housing, women's specialty services, adolescent treatment services.

Kairos Health Care, Holy Cross

8218 N. Jennings Road
Mt. Morris, MI 48458
(844) 452-4767
Corcoran House Residential Treatment for Women

Life Challenge Ministries

Life Challenge of Southeastern Michigan
17667 Pierson Street, Detroit, MI 48219
1230 Dupont St, Flint, MI 48504
(844) 355-LIFE
info@lcministries.org

One-year residential program for men and women with drug, alcohol, and other life-controlling addictions. Affiliated with Teen Challenge USA, International, our goal is more than rehabilitation, Faith based program.

New Paths Inc.

765 E. Hamilton Avenue, Flint, MI 48505
(810) 233-5340
newpaths.org
Short and long-term residential treatment, withdrawal management, outpatient services, recovery housing, 23-hour sobering facility, Court ordered treatment programming.

Salvation Army Adult Rehabilitation (Men Only)

2200 N. Dort Highway, Flint, MI 48506
(810) 234-2678

Long-term residential program, spiritual base, work therapy, group and individual counseling, leisure time activities.



GENESEEE COUNTY OUTPATIENT CENTERS & SUPPORT SERVICES

Bio-Med Behavioral Health Care INC. - Flint

1044 Gilbert Road, Flint, MI 48532
(810) 733-7623
Outpatient, integrated treatment, medication assisted treatment.

Catholic Charities

901 Chippewa Street, Flint, MI 48503
(810) 232-9950
Outpatient SUD treatment, Court ordered treatment programming.

Families Against Narcotics - Genesee County Chapter

(810) 397-7175
familiesagainstnarcotics.org
Information regarding prescription drug abuse, local resources, family support network. Available to answer questions regarding substance use and steps to seek treatment.

Genesee Community Health Center

422 W. 4th Avenue, Flint, MI 48503
(810) 496-5777
Integrated health care, treatment services for co-occurring disorders, medication assisted treatment (Suboxone, Vivitrol).

Hamilton Community Health Center

Multiple Locations
(810) 406-HCHN (4246)
Outpatient, substance abuse counseling, Vivitrol program.

Holy Cross Services

4318 Miller Road, Flint, MI 48507
(810) 249-9924
Outpatient SUD treatment, recovery housing.



Hope Network

1110 Eldon Baker Drive, Flint, MI 48503
(810) 232-2766
Free family and addiction services.

Insight Wellness Center

4400 S. Saginaw St., Ste. 1370
Flint, MI 48507
(810) 223-0199
Medication assisted treatment, outpatient SUD treatment, services for co-occurring disorders, pain management, physical therapy.

Meridian Health Services

1289-D S. Linden Road, Flint, MI 48532
(810) 620-7501
Outpatient care, integrated treatment, and family therapy.

New Oakland Family Center

2401 South Linden Road,
Flint, MI 48507
(810) 957-4310
Intensive outpatient counseling (dual diagnosis – mental health and substance use disorder).

Remedy Exchange Programs (outreach services)

12745 S. Saginaw, Suite 806-144
Grand Blanc, MI 48439
(810) 449-0159
remedyexchange@gmail.com
PRIME for Life is a program that helps youth and adults learn how to reduce their risk of alcohol and other drug related problems throughout life.

Sacred Heart - Flint

2091 Professional Drive,
Flint, MI 48532
(810) 732-1652
Outpatient, integrated treatment, medication assisted treatment (Methadone, Vivitrol), women's specialty.

The Serenity House of Flint

954 Church Street, Flint, MI 48502
(810) 893-1276
Informational, holistic options for recovery from addictions.

RESOURCES OUTSIDE OF GENESEE COUNTY

Brighton Center for Recovery

12851 Grand River Road
Brighton, MI 48116
(810) 227-1211
brightonrecovery.org
Inpatient and intensive outpatient.
Provides residential, outpatient, dual diagnosis, and detox services. Will accept private insurance, cash, and Medicare.

Dawn Farms

6633 Stoney Creek Road
Ypsilanti, MI 48197
(734) 485-8725
Adolescent (17+) and adult residential, outpatient. Non-medicated, 12-step based detox is FREE to anyone, even if they do not stay for residential treatment. Transitional housing.

Grace Centers of Hope

35 E. Huron Street, Pontiac, MI 48342
(855) HELP-GCH
Adult residential, family and life-skills programs.

Henry Ford Maplegrove Center

6773 W Maple Road
West Bloomfield, MI 48322
(248) 661-6100
henryford.com
Outpatient and inpatient for adults.
Outpatient only for adolescents.

Kairos Healthcare Adolescents

3400 South Washington Road
Saginaw, MI 48601
(989) 755-1072
Adolescent and adult residential, integrated treatment, informational, prevention and problem assistance, outpatient screening assessment referral and follow-up.

Meridian Health Services

1255 N Oakland Blvd
Waterford, MI 48327
(248) 599-8999
Detox, adult residential, inpatient and outpatient care, integrated treatment, and family therapy.

Sacred Heart – Memphis

400 Stoddard Road
Memphis, MI 48041
(888) 804-7472 Admissions
(888) 802-7472 Admin
Adult residential, detox inpatient, case management, early intervention, integrated treatment, peer recovery and support, screening assessment referral and follow-up, Methadone.
Residential admissions:
(888) 804-7472 or (734) 284-0070
Monday-Friday, 8:30am-5:00pm
Emergency admissions:
(888) 804-7472, ext. 266, weekdays, weekends, and holidays. Sliding fee scale, Medicaid, ABW, and most health insurance.

Salvation Army Harbor Light

42590 Stepnitz Drive
Clinton Township, MI 48036
(586) 954-1838
Adult residential/outpatient, case management, detox, screening assessment referral and follow-up.

Serenity Therapy Center

745 Barclay Circle, #305
Rochester Hills, MI 48307
(586) 219-7010
serenityhelp.com
Outpatient, addiction counseling, family therapy, and interventions.

Teen Challenge of Western Michigan

440 Pontaluna Road
Muskegon, MI 49444
Men's Phone: (231) 798-7927
Women's Phone: (231) 798-2702
Email: info@wm-tc.com
wm-tc.com/contact-us
One year residential program. Faith based.

Vision Quest Recovery

Port Huron, MI
info@visionquestrecovery.com
Program Director: (810) 937-6279
Assistant Program Director:
(248) 421-8143
Transitional housing program, 12-step program, structure, guidelines.

Disclaimer: Resource details provided by Families Against Narcotics. All information was accurate at time of printing. Information is subject to change.

This program is supported by the Michigan Health Endowment Fund.



Medical Society Foundation

Consider a donation to the Medical Society Foundation for all of your holiday giving. What a wonderful way of expressing your holiday sentiments while supporting important health related causes.

The Medical Society Foundation has been coordinating physician giving in Genesee County since 1987. This holiday season, why not use the Foundation to make sure your gifts to family, friends and colleagues help to improve the health and well-being of our community.

By giving to the Medical Society Foundation, you receive a great year-end tax benefit at the same time that you tell others how much their health – really means to you.

The Medical Society Foundation funds have been used to support the charitable activities of the Genesee County Medical Society.

Contributions can also be made in memory of an individual or to honor someone.

For questions or information on how your gift can help support the charitable activities of your Medical Society Foundation contact Peter A. Levine, MPH at (810) 733-9925 or at plevine@gcms.org.

Medical Society Foundation Mission Statement: The Medical Society Foundation is organized and does operate for the purpose of supporting continuing medical education and health-related charitable activities that further the cause of medicine.

Mail your donations to:

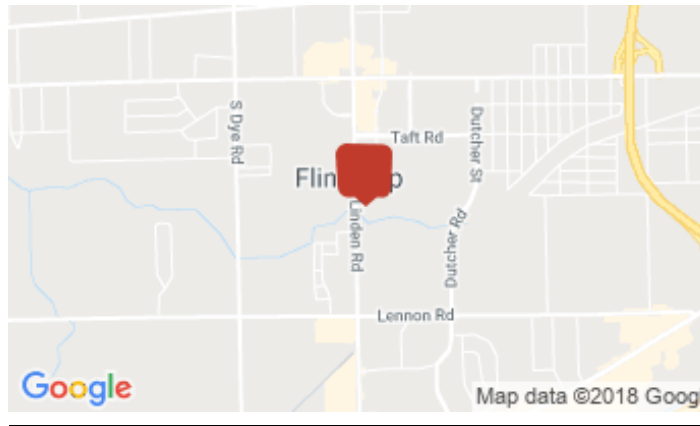
**Medical Society Foundation
4438 Oak Bridge Drive, Suite B
Flint, MI 48532-5467**

4438 Oak Bridge Drive Ste A 15726LG

4438 Oak Bridge Dr, Flint, MI 48532



Listing ID: 30337937
Status: Active
Property Type: Office For Lease
Office Type: Business Park
Contiguous Space: 2,879 SF
Total Available: 2,879 SF
Lease Rate: \$12 PSF (Annual)
Base Monthly Rent: \$2,879
Lease Type: NNN
Nearest MSA: Flint
County: Genesee
Tax ID/APN: 07-21-651-009
Zoning: GENERAL COMMERCIAL
Gross Building Area: 9,990 SF
Year Built: 1994



More Information Online

<http://coopercom.catylist.com/listing/30337937>

QR Code

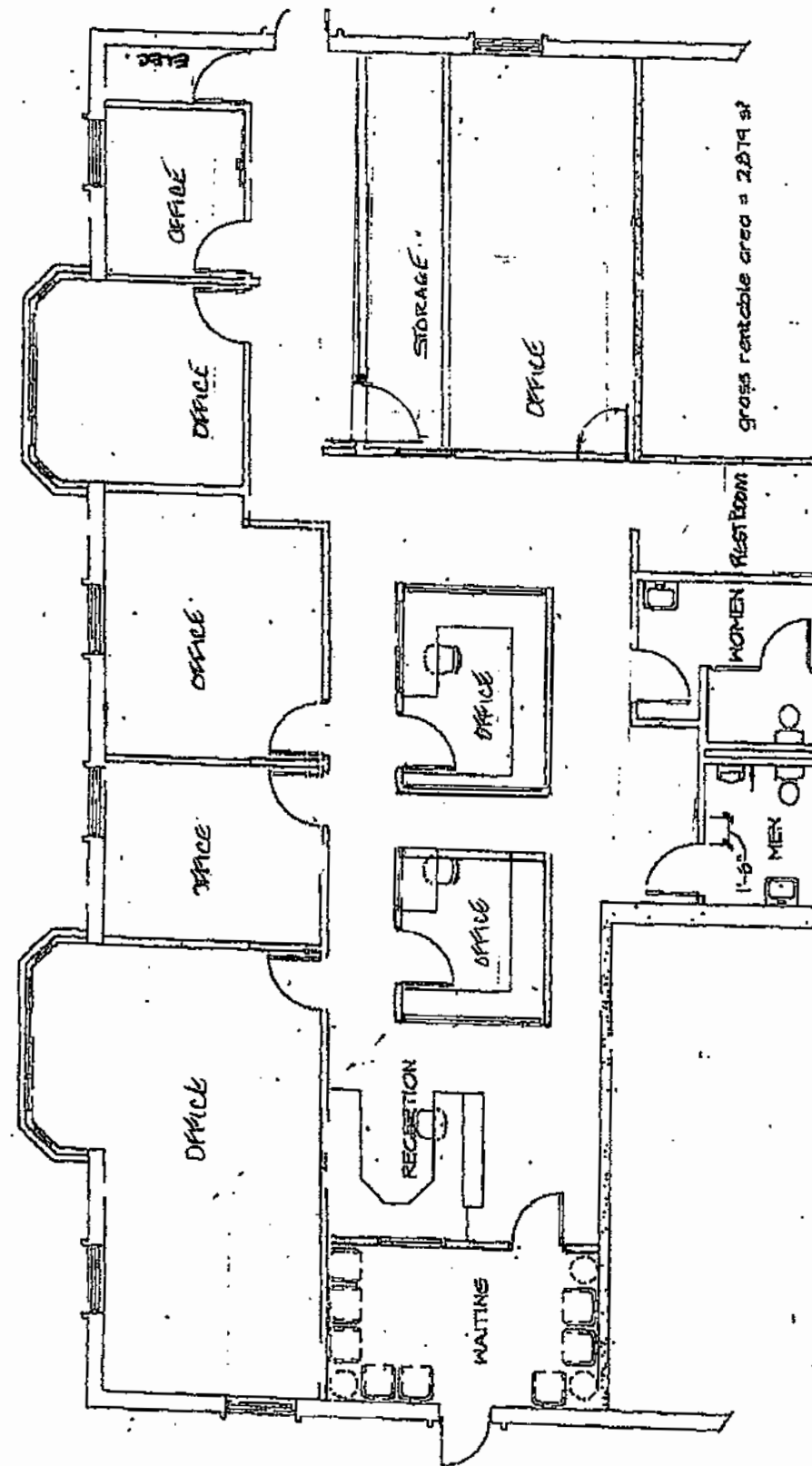
Scan this image with your mobile device:



Overview/Comments

Linden Rd. visibility in versatile suite with 8 - 9 offices plus waiting and storage. 2,879 SF can be expanded by up to ±1,500 SF. Two private offices with large bay windows, lots of windows that open throughout. Well lit, ample parking in professional office park. Convenient location to expressways and the Linden, Miller and Corunna Rd. corridors.

N.T.S.



NEW WORK PLAN
SCALE: 1/8" = 1'-0"
FIG. 5, 5200

Property Contacts



Karen Cape

Cooper Commercial
810-423-3775 [M]
810-732-6000 [O]
karen@coopercom.com

FOR LEASE

May 2019 Fitness Calendar

FREE! Commit to Fit! Class Schedule



Commit to Fit! offers fitness classes at **no cost** to all individuals who live or work in Flint and Genesee County. Fitness Centers require participants to be age 18 and older, other locations are open to all ages. See back side for details.

	MONDAY	TUESDAY	WEDNESDAY	THURSDAY	FRIDAY	SAT
MAY 2019			¹ Enhance Fitness Hasselbring Senior Center 9:00 a.m. Arthritis Foundation Exercise Program Davison Area Senior Center 10:00-11:00am Arthritis Foundation Exercise Program Forest Township Senior Center 12:15-1:00pm Community Yoga Brownell Elementary 4:30-5:30pm Community Yoga Crim Fitness Foundation 5:15-6:15pm Zumba GAC 6:45 p.m.	² Enhance Fitness Berston Field House 10:00 a.m. Arthritis Foundation Exercise Program Grand Blanc Senior Center 10-11:00am Total Body Challenge 10:00-11:00am Brennan Senior Center SplashFIT U of M-Flint Rec 11:00 am Chair Aerobics Brennan Senior Center 12:30-1:15pm Basic Yoga Insight Health & Fitness center 6:45 p.m.	³ Enhance Fitness Hasselbring Senior Center 9:00 a.m. Arthritis Foundation Exercise Program Burton Senior Center 9:00-10:00am Arthritis Foundation Exercise Program Swartz Creek Senior Center 11am-12pm	⁴ Yoga Flow U of M-Flint Rec 11:00am
	⁶ Water Aerobics IHFC 9:00am Enhance Fitness Hasselbring Senior Center 9:00am Senior Stretch YMCA Downtown 10:00am Pound GAC 9:15am Arthritis Foundation Exercise Program Loose Senior Center 2:00-3:00pm Aqua Fitness U of M-Flint Rec 5:30-6:30 pm Water Aerobics IHFC 6:00pm	⁷ Enhance Fitness Berston Field House 10:00 a.m. Arthritis Foundation Exercise Program Grand Blanc Senior Center 10:00-11:00am Total Body Challenge 10:00-11:00am Brennan Senior Center SplashFIT U of M-Flint Rec 11:00 am Chair Aerobics Brennan Senior Center 12:30-1:15pm Hustle Aerobics Brownell STEM 4:30-5:30	⁸ Enhance Fitness Hasselbring Senior Center 9:00 a.m. Arthritis Foundation Exercise Program Davison Area Senior Center 10:00-11:00am Arthritis Foundation Exercise Program Forest Township Senior Center 12:15-1:00pm Zumba GAC 6:45 p.m.	⁹ Enhance Fitness Berston Field House 10:00 a.m. Arthritis Foundation Exercise Program Grand Blanc Senior Center 10-11:00am Total Body Challenge 10:00-11:00am Brennan Senior Center SplashFIT U of M-Flint Rec 11:00 am Chair Aerobics Brennan Senior Center 12:30-1:15pm Basic Yoga Insight Health & Fitness center 6:45 p.m.	¹⁰ Enhance Fitness Hasselbring Senior Center 9:00 a.m. Arthritis Foundation Exercise Program Burton Senior Center 9:00-10:00am Arthritis Foundation Exercise Program Swartz Creek Senior Center 11am-12pm	¹¹ Yoga Flow U of M-Flint Rec 11:00am
	¹³ Water Aerobics IHFC 9:00am Enhance Fitness Hasselbring Senior Center 9:00 a.m. Senior Stretch YMCA Downtown 10:00 a.m. Pound GAC 9:15am	¹⁴ Enhance Fitness Berston Field House 10:00 a.m. Arthritis Foundation Exercise Program Grand Blanc Senior Center 10:00-11:00am Total Body Challenge 10:00-11:00am Brennan Senior Center	¹⁵ Enhance Fitness Hasselbring Senior Center 9:00 a.m. Arthritis Foundation Exercise Program Davison Area Senior Center 10:00-11:00am Arthritis Foundation Exercise Program Forest Township Senior Center 12:15-1:00pm	¹⁶ Enhance Fitness Berston Field House 10:00 a.m. Arthritis Foundation Exercise Program Grand Blanc Senior Center 10-11:00am Total Body Challenge 10:00-11:00am Brennan Senior Center	¹⁷ Enhance Fitness Hasselbring Senior Center 9:00 a.m. Arthritis Foundation Exercise Program Burton Senior Center 9:00-10:00am Arthritis Foundation Exercise Program Swartz Creek Senior Center 11am-12pm	¹⁸ Yoga Flow U of M-Flint Rec 11:00am

MIC-6C3 May.Fitness.Class.Calendar.Newsletter.042519.tw

May 2019 Fitness Calendar

FREE! Commit to Fit! Class Schedule



Commit to Fit! offers fitness classes at **no cost** to all individuals who live or work in Flint and Genesee County. Fitness Centers require participants to be age 18 and older, other locations are open to all ages. See back side for details.

	MONDAY	TUESDAY	WEDNESDAY	THURSDAY	FRIDAY	SAT
	²⁰ Arthritis Foundation Exercise Program Loose Senior Center 2:00-3:00pm Aqua Fitness U of M-Flint 5:30pm Water Aerobics IHFC 6:00pm	²¹ SplashFIT U of M-Flint Rec 11:00 am Chair Aerobics Brennan Senior Center 12:30-1:15pm Hustle Aerobics Brownell STEM 4:30-5:30	²² Community Yoga Brownell Elementary 4:30-5:30pm Zumba GAC 6:45 p.m.	²³ SplashFIT U of M-Flint Rec 11:00 am Chair Aerobics Brennan Senior Center 12:30-1:15pm Basic Yoga Insight Health & Fitness center 6:45 p.m.		
	²⁰ Water Aerobics IHFC 9:00am Enhance Fitness Hasselbring Senior Center 9:00 am Senior Stretch YMCA Downtown 10:00 Pound GAC 9:15am Arthritis Foundation Exercise Program Loose Senior Center 2:00-3:00pm Aqua Fitness U of M-Flint 5:30pm Water Aerobics IHFC 6:00pm	²¹ Enhance Fitness Berston Field House 10:00 a.m. Arthritis Foundation Exercise Program Grand Blanc Senior Center 10:00-11:00am Total Body Challenge 10:00-11:00am Brennan Senior Center SplashFIT U of M-Flint Rec 11:00 am Chair Aerobics Brennan Senior Center 12:30-1:15pm Hustle Aerobics Brownell STEM Academy 4:30-5:30pm	²² Enhance Fitness Hasselbring Senior Center 9:00 a.m. Arthritis Foundation Exercise Program Davison Area Senior Center 10:00-11:00am Arthritis Foundation Exercise Program Forest Township Senior Center 12:15-1:00pm Community Yoga Brownell Elementary 4:30-5:30pm Zumba GAC 6:45 p.m. Hustle Aerobics 6:00-7:00pm Eisenhower Elementary	²³ Enhance Fitness Berston Field House 10:00 a.m. Arthritis Foundation Exercise Program Grand Blanc Senior Center 10-11:00am Total Body Challenge 10:00-11:00am Brennan Senior Center SplashFIT U of M-Flint Rec 11:00 am Chair Aerobics Brennan Senior Center 12:30-1:15pm Basic Yoga Insight Health & Fitness center 6:45 p.m.	²⁴ Enhance Fitness Hasselbring Senior Center 9:00 a.m. Arthritis Foundation Exercise Program Burton Senior Center 9:00-10:00am Arthritis Foundation Exercise Program Swartz Creek Senior Center 11am-12pm	²⁵ Yoga Flow U of M-Flint Rec 11:00am
	²⁷ Water Aerobics IHFC 9:00am Enhance Fitness Hasselbring Senior Center 9:00 a.m. Senior Stretch YMCA Downtown 10:00 a.m. Pound GAC 9:15am Arthritis Foundation Exercise Program Loose Senior Center 2:00-3:00pm Aqua Fitness U of M-Flint 5:30pm Water Aerobics IHFC 6:00pm	²⁸ Enhance Fitness Berston Field House 10:00 a.m. Arthritis Foundation Exercise Program Grand Blanc Senior Center 10:00-11:00am Total Body Challenge 10:00-11:00am Brennan Senior Center SplashFIT U of M-Flint Rec 11:00 am Chair Aerobics Brennan Senior Center 12:30-1:15pm Hustle Aerobics Brownell STEM 4:30-5:30	²⁹ Enhance Fitness Hasselbring Senior Center 9:00 a.m. Arthritis Foundation Exercise Program Davison Area Senior Center 10:00-11:00am Arthritis Foundation Exercise Program Forest Township Senior Center 12:15-1:00pm Community Yoga Brownell Elementary 4:30-5:30pm Zumba GAC 6:45 p.m. Hustle Aerobics 6:00-7:00pm Eisenhower Elementary	³⁰ Enhance Fitness Berston Field House 10:00 a.m. Arthritis Foundation Exercise Program Grand Blanc Senior Center 10-11:00am Total Body Challenge 10:00-11:00am Brennan Senior Center SplashFIT U of M-Flint Rec 11:00 am Chair Aerobics Brennan Senior Center 12:30-1:15pm Basic Yoga Insight Health & Fitness center 6:45 p.m.	³¹ Enhance Fitness Hasselbring Senior Center 9:00 a.m. Arthritis Foundation Exercise Program Burton Senior Center 9:00-10:00am Arthritis Foundation Exercise Program Swartz Creek Senior Center 11am-12pm	

May 2019 Fitness Calendar

FREE! Commit to Fit! Class Schedule

Class Descriptions & Locations

Basic Yoga (1 hour)

This class is a balanced flow of postures designed to build stamina, strength, and flexibility while promoting weight loss and general stress relief.

Insight Health & Fitness Center (IHFC)

Formerly Hurley Health & Fitness Center
4500 S. Saginaw St
Flint, MI 48507
(810) 893-6489



Community Yoga (1 hour) – This is a yoga class for all levels.

Please wear comfortable and loose-fitting clothing. Some yoga mats will be available to borrow as well

Mindfulness@crim.org
(810)-235-7461



Crim Fitness Foundation

452 Saginaw Street Downtown Flint

Senior Stretch (1 hour) - This class will help improve overall strength and flexibility. The class is led by a certified senior fitness instructor who will guide you through the exercises at your own pace. This class is perfect for all ability levels.

YMCA Downtown Flint

411 E. 3rd Street
Flint, MI 48503
(810) 232-9622



Spin/hiit – 30 min. A high intensity interval training (HIIT) session on the spin bikes. HIIT is about mixing high speed/high intensity intervals with moderate recovery periods.

POUND® transforms drumming into an incredibly effective way of working out. Instead of listening to music, you become the music in this exhilarating full-body workout that combines cardio, conditioning, and strength training.

Genesys Athletic Club (GAC)

801 Health Park Blvd
Grand Blanc, MI 48439
(810) 606-7300



Total Life Prosperity B.A.S.E. Fitness Series

Each class includes **B**alance and Flexibility, **A**erobic Activity, **S**trength and Resistance Training, and **E**xercise Education

Chair Aerobics

Basic Seated functional fitness class for those who are overcoming mobility issues; includes aerobic activity, core work, and resistance training. Location: *Brennan Senior Center*

Total Body Challenge

Intermediate level workout which includes cardio, strength training, core work, balance and coordination, and flexibility training. Location: *Brennan Senior Center*

Hustle Aerobics

Advanced level workout that incorporates 45 minutes of non-stop cardio to the latest hustle songs followed 15 minutes bodyweight strength training. Location: *Brownell & Eisenhower*

IHFC Water Aerobics

A 1-hour class that will help you strengthen your muscles and cardiovascular system plus improve flexibility. Location: *Insight Health and Fitness*

Aquafitness/Splash Bash- An invigorating water workout. Ideal for all fitness levels. No swimming required

Yoga Flow: Learn yoga at a comfortable pace. Connect your mind's attention to your body's fluidity and movement -- promote strength, flexibility, coordination, agility, stamina and an overall experience of well-being.

University of Michigan-Flint Rec Center

401 Mill Street, Flint, MI 48502
(810) 762-3441



Enhance Fitness (1 hour) – A fun, energizing class geared toward improving overall functioning and well-being. Improve your cardiovascular fitness, strength, flexibility and balance!

TIMES & LOCATIONS:

Hasselbring Senior Center

1002 Home Ave. Flint, MI
(810) 766-7128 Mon, Weds, & Fri 9-10 am

Flint Farmers' Market- Tuesdays &

Thursdays 10:00-11:00 am
300 E. First St Flint, MI
(810) 232-1399

Berston Field House

3300 Saginaw St.
Flint, MI 48505
Thursdays, 10:00am

Main Clinic

2900 N. Saginaw Street
Flint, MI 48505
Wednesdays, 5:30 - 6:30pm

Genesee County Parks and Rec

Visit the calendar at: <http://geneseecountyparks.org/> to learn more about fun family events in Genesee County Parks!

For more information please go to:

- Geneseecountyparks.org or call 800-648-PARK
- Descriptions for classes such as Let's Hike It Baby, Yoga for Kids, Yoga for Families, and more can all be found at the online calendar on Commit2fit.com or geneseecountyparks.org



Vehicle City CrossFit

Crossfit is functional movements at high intensity relative to your ability. Anyone can do it! This is a one hour class that you will come in, warm up as a group, do the workout together and then go home feeling accomplished. Located at: *1473 Linden Road Flint. Corner of Corunna and Linden Road*

Arthritis Foundation Exercise Program (1 hour) A low-impact physical activity program proven to reduce pain and decrease stiffness. The routines include gentle range-of-motion exercises that are suitable for every fitness level!

Grand Blanc Senior Center:

Tuesday & Thursdays 10am – 11am

Swartz Creek Senior Center:

Fridays 11am – 12pm

Forest Township Senior Center:

Wednesdays 12:30pm–1:30pm



HAPPY BIRTHDAY DOCTOR

MAY

Matthew Sardelli, MD..... 1	Michael Danic, DO..... 16
Michael Zerafa, MD..... 1	Mustafa Akpinar, MD 16
Mohamadalli Amlani, MD 5	Babatunde Almaroof, MD 16
Sylvia Kosciolk, MD 5	Gerald Fulton, MD 17
Venkata Puttagunta, MD..... 5	Christopher Tykocki, DO..... 18
Melissa Hamp, MD..... 6	Alicia Franco-Imperial, MD 18
Jeffrey Mitchinson, MD 6	Crumsan Nundkumar, MD..... 18
Christopher Murray, DO..... 7	Paul Adams, MD..... 19
Dong-Wha Ohm, MD 7	James Walter, MD 19
Genevieve Sierminski, MD 7	Michael Giacalone, MD 24
Linval Fleetwood, MD 8	Virgilio Bonet, MD 29
Mehmet Agabigum, MD 13	Barry DeWitt, MD..... 29
Clifford Cox, MD 13	James Aills, MD 30
Neil Friedman, MD..... 14	Sami Khan, MD..... 30
Edwin Gullekson, MD 14	Caroline Mathew, MD 31
Paul Morin, MD 15	Nestor Tomycz, MD..... 31
William Thompson, MD..... 15	

YOUR \$\$\$ AT WORK

- GCMS designed the Social Determinants of Health Town Hall
- GCMS worked with insurance companies to help several practices with panel and prior authorization issues
- GCMS Practice Managers met with Blue Cross Blue Shield of Michigan to work on issues of mutual importance
- GCMS began participating with the MSMS Health Can't Wait prior authorization campaign
- GCMS and MSMS met with legislators to discuss problems that patients are experiencing prior authorization
- GCMS represented physicians in community venues.
- GCMS worked with the Greater Flint Health Coalition to create a Physician Opioid Tool Kit
- GCMS continues to represent physicians at the Greater Flint Health Coalition

I. Call to Order

The meeting was called to order in the Rapport Conference Room at 6:00 pm, by Ed Christy, MD, President.

II. Review of Minutes

Motion: that the minutes of the November 27, 2018, Board of Directors meeting be approved as presented. The motion carried.

III. Reports

(A) Community & Environmental Health

The Community and Environmental Health Committee met on January 16th. The Committee discussed possible future options for getting funding for the FACT project.

The Committee also wished to have a meeting set up with Dr. Pam Pugh and Gary Johnson, to discuss concerns about PFAS.

B) Finance

1. Budget-to-Actual Report, Period ending 12/31/18

Motion: that the budget to actual report for the fiscal year to date on December 31, 2018, be approved as presented. The motion carried.

C) Membership

Levine reviewed the membership trends for the period ending January 4, 2019. He noted the paid membership is down by 35.

Levine also reviewed the list of non-paid members from 2018. Dr. Christy invited Board members to review that list and invite people to come back as members.

The Board also reviewed the list of 2019 nonpayment and was asked to be aware when meeting peers as to whether they are members or not.

Directive: Levine was directed to ask before larger groups who have not paid yet for 2019 to do so.

D) MSMS Update

Motion: that Dr. John Waters be put forth to MSMS as nominee for District Director for Region 6. The motion carried.

Pete Levine noted that Julie Novak has requested any further input regarding MSMS remodeling. The Board had no response in addition to what was provided at her presentation.

Pete Levine noted that Dr. Theodore Jones is running for Speaker of the House. Dr. Philip Wise is running for Vice Speaker. Dr. S. Bobby Mukkamala is running for President-Elect. Dr. Colone is running for the AMA delegation. Levine noted that he has reported to the county execs, that Dr. Colone will be announcing his candidacy for President-Elect, at the close of the MSMS House of Delegates in May.

E) MSMS House of Delegates

Attendance at MSMS House of Delegates

Levine reviewed the list of attendees for the upcoming House of Delegates. It was noted that Drs. Christy, Colone, Duncan, Herbert, Kulkarni, Rama Rao, and Venkat Rao will be attending. Dr. Mukkamala will attend as Chair of the MSMS Board. Dr. Waters will attend as Treasurer. Staff requested input on interest in serving on reference committees.

F) Legislative Liaison

On behalf of Dr. Blight, Pete Levine reviewed the December 3, 2018, meeting of the Legislative Liaison Committee. It was attended by Senators Dave Robertson and Ken Horn, as well as Representative Tim Sneller, and Chris Flores, Chief of Staff for Congressman Kildee. There are a lot of issues discussed including no fault auto insurance, maintenance of certification changes, in state government as a result of the new elections and, prior authorization. This was also Senator Dave Robertson's last meeting on the Committee after 28 years of service. He expressed pleasure that Mike Mueller will be serving in his old State House seat.

G) Greater Flint Health Coalition

Dr. Reynolds reviewed the data provided by the Greater Flint Health Coalition showing that SIM practice utilization of the ER dropped from 725.7 visits per thousand Medicaid members to 615.78 per thousand for qualifying Medicaid members.

H) Nominating Committee Report

On behalf of Dr. Dani, Pete Levine reviewed the deliberations of the Nominating Committee which were performed at the request of the Board. The purpose of the meeting was to respond to a request from the Board to review data regarding attendance at Board meetings. The Nominating Committee was directed to bring recommendations back to the Board on how to proceed regarding keeping or removing individual members from the Board. The Committee brought the following recommendations:

Motion: that the resignation requests from Drs. Shafi Ahmed, Michael Danic, Syed Osama, and Raymond Rudoni be accepted by the Board of Directors with a letter sent thanking them for their many years of service. The motion carried.

Motion: that all individuals whose attendance had fallen below 50% and have responded that they wish to stay on the Board be kept on the board noting that the Board of Directors will revisit their term after one year. Those individuals include doctors Khalid Ahmed, Qazi Azher, Pino Colone, Niketa Dani, Deborah Duncan, Asif Ishaque, Rima Jibaly, Farhan Khan, Rama Rao, Venkat Rao, Robert Soderstrom, Tarik Wasfie and Amanda Winston. The motion carried.

The Board feels that it would like to discuss attendance at the House of Delegates as part of the future consideration of the Board membership. This is an issue to be brought up at a later date.

I. Presidents' Report

Dr. Christy reported that the upcoming Town Hall on "Staying Out of Trouble with the New Opioid Laws" will be first rate. The presentations will revolve around both the new laws, as well as what to do if contacted by Licensing and Regulatory Affairs.

Consensus: that the County Dental Society and Veterinary Society be invited to the Town Hall, with invitations sent to all of the hospitals and residency programs.

IV. Other Business

Pete Levine reviewed the future practice managers meetings topics encouraging Board members to send their practice managers.

Levine reported that Dr. Mukkamala is visiting many counties to explain his candidacy for President Elect of MSMS in preparation for the House of Delegates. He noted that he attended the Saginaw County Medical Society General Membership Meeting with Dr. Mukkamala, before which, he spoke to the Saginaw County Medical Society Board of Directors. It went extremely well.

V. New Business

Consensus: it was the consensus of the Board of Directors to allow calling-in to GCMS Board meetings on a trial basis and to review attendance and participation after a one-year trial. It was noted that attending the Board meeting through call-ins will count the same as physical attendance. Physical attendance is preferred and encouraged.

VI. Adjournment

No further business appearing, the meeting was adjourned at 7:45 pm.

Respectfully submitted,
Peter Levine, MPH
Executive Director

Easy Ways to Donate to the Medical Society Foundation:

The Medical Society Foundation is engaged in a Capitol Campaign. The purpose of the Campaign is to grow the corpus to support the charitable activities of the Genesee County Medical Society. Those activities include public and community health, support for the under-served, and wellness initiatives.

To continue its good work, the Medical Society Foundation is asking you to consider leaving a legacy gift to the Foundation. If all, or even a significant portion of our membership left just a small part of our estates to the Foundation, the Foundation could continue helping this community in so many ways, by supporting the Medical Society. To make a gift, simply use these words:

In your Trust, *"Grantor directs Trustee to distribute ___% of all assets then held in Trust or later added to this Trust to the Medical Society Foundation, to be held in an endowed fund and used in the discretion of its then existing board of directors in furtherance of the purposes of the Foundation"*

In your Will, *"I give, devise and bequeath ___% of my Estate to the Medical Society Foundation, to be held in an endowed fund and used in the discretion of its then existing Board of Directors in furtherance of the purposes of the Foundation"*

While this is not a subject that is comfortable to broach, it is an opportunity to support the Foundation which supports the Medical Society's charitable activities on behalf of the membership. Please give. You can give via a trust or will. You can give from your IRA. You can give appreciated stock, and you can give cash. Please support the organization which does so much on behalf of the medical community and the patients we serve.

Please feel free to contact Peter Levine, Executive Director at 810-733-9925 or plevine@gcms.org.



Don't Forget!
Donations are tax deductible!

Please feel free to contact Peter Levine, Executive Director at 810-733-9925 or plevine@gcms.org.



120 West Saginaw Street | East Lansing, Michigan 48823
517-337-1351 | msms@msms.org | www.msms.org

Application Code:

State and County Medical Society MEMBERSHIP APPLICATION

Join MSMS and your County Medical Society online at www.joinmsms.org

Join GCMS/MSMS

Renew Membership

- I am in my first year of practice post-residency.
- I am in my second year of practice post-residency.
- I am in my third year of practice post-residency.
- I have moved into Michigan; this is my first year practicing in the state.
- I work 20 hours or less per week.
- I am currently in active military duty.
- I am in full, active practice.
- I am a resident/fellow.

Male Female

First (legal) Name: _____ Middle Name: _____ Last Name: _____ MD DO

Nickname or Preferred Form of Legal Name: _____ Maiden Name (if applicable) _____

Job Title: _____

W Phone _____ W Fax _____ H Phone _____ H Fax _____

Mobile: _____ Email Address _____

Office Address Preferred Mail Preferred Bill Preferred Mail and Bill

City: _____ State: _____ Zip: _____

Home Address Preferred Mail Preferred Bill Preferred Mail and Bill

City: _____ State: _____ Zip: _____

*Please base my county medical society membership on the county of my (if addresses are in different counties): Office Address Home Address

*Birth Date: ___/___/___ Birth Country _____ MI Medical License #: _____ ME #: _____

Medical School _____ Graduation Year: _____ ECFMG # (if applicable) _____

Residency Program _____ Program Completion Year _____

Fellowship Program _____ Program Completion Year _____

Hospital Affiliation _____

• Primary Specialty _____ Board Certified: Yes No

• Secondary Specialty _____ Board Certified: Yes No

Marital Status: Single Married Divorced Spouse's First Name: _____ Spouse's Last Name: _____

Is your spouse a physician?: Yes No If yes, are they a member of MSMS?: Yes No

Within the last five years, have you been convicted of a felony crime?: Yes No If "yes," please provide full information: _____

Within the last five years, have you been the subject of any disciplinary action by any medical society or hospital staff?: Yes No

If "yes," please provide full information: _____

I agree to support the County Medical Society Constitution and Bylaws, the Michigan State Medical Society Constitution and Bylaws, and the Principles of Ethics of the American Medical Association as applied by the AMA and the MSMS Judicial Commission.

Signature _____ Date: _____

County Medical Society Use Only
Reviewed and Approved by: