

# THE **Bulletin**

November 2017 Volume 112, Number 43



**Meet Your New  
President,  
Gerald Natzke, DO**

**Legionella Survey**

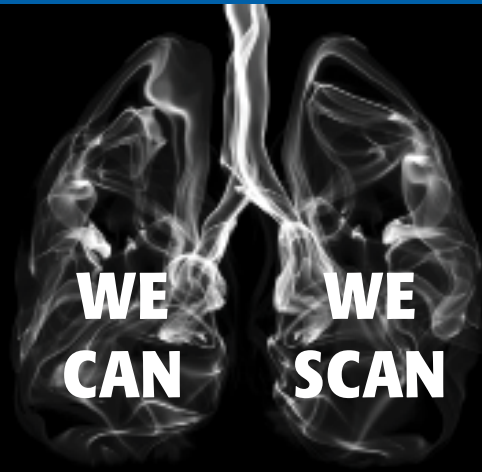
**The Waters'  
Backyard**

**New CME  
Requirements**

**Come to  
the Ball,  
November 18th!**

**GENESEE COUNTY MEDICAL SOCIETY**  
*Organized Medicine's Leading Edge*

**CAN YOU SEE  
HOW SMOKING  
HAS AFFECTED  
THEIR LUNGS?**



**TELL YOUR AT-RISK PATIENTS ABOUT OUR  
CT LUNG SCREENING  
UTILIZING A SPECIFIED LOW-DOSE (LDCT) PROTOCOL**

**CT LUNG CANCER SCREENING ELIGIBILITY:**

**92%**



Early Detection

**- 55-76 YEARS OF AGE**

**HAVE SMOKED AT LEAST**



**YEARS\***

**CURRENT SMOKER OR QUIT SMOKING WITHIN THE LAST 15 YEARS**

**HAVE NOT HAD LUNG CANCER BEFORE & HAVE NO LUNG CANCER SYMPTOMS**

\* 1 pack-year = smoking one pack (20 cigarettes) per day for 1 year.

**15%**



Late Stages

**Survival Rates**

- LDCT reduces lung cancer mortality rate 20% compared to chest x-rays alone.
- We are ACR accredited for lung screenings.
- CTLS program headed by specialized radiologist.



CT screenings are offered at 5 of our 8 locations: Lennon Rd, Flint • Fenton • Grand Blanc • Novi • Royal Oak

**ASSOCIATE EDITOR**

Peter S. Thoms, MD

**GCMS OFFICERS 2017-18**

President –Gerald Natzke, Jr, DO

President Elect – Ed Christy, MD

Immed. Past Pres. – John Hebert, III, MD

Secretary – Qazi Azher, MD

Treasurer – Ethiraj Raj, MD

**MSMS OFFICERS**

Chair – S. Bobby Mukkamala, MD

**DISTRICT DIRECTOR VI**

S. Bobby Mukkamala, MD

**DELEGATES**

Shafi Ahmed, MD

Qazi Azher, MD

Amitabha Banerjee, MD

Cathy Blight, MD

Laura Carravallah, MD

Edward Christy, MD

Pino Colone, MD

Niketa Dani, MD

Deborah Duncan, MD

Hesham Gayar, MD

John Hebert, III, MD

Rima Jibaly, MD

Nita Kulkarni, MD

Gerald Natzke, DO

Raymond Rudoni, MD

Tarik Wasfie, MD

**ALTERNATE DELEGATES**

Khalid Ahmed, MD

Michael Danic, MD

Brenda Rogers-Grays, DO

Asif Ishaque, MD

Sunil Kaushal, MD

Farhan Khan, MD

Sayed Osama, MD

Venkat Rao, MD

Rama Rao, MD

Lawrence Reynolds, MD

Punam Sharman, MD

Robert Soderstrom, MD

Amanda Winston, MD

**OTHER BOARD MEMBERS**

Gary Johnson, MD

Michael Mueller, MD

Elmahdi Saeed, MD

James Walter, MD

**Executive Director** – Peter A. Levine, MPH

**Executive Assistant** – Sherry Smith

# THE Bulletin

*Read by 96% of GCMS members.*

## FEATURE ARTICLES

New CME Requirements	7
Meet Your New President, Gerald Natzke, DO	8
October Legislative Liaison Committee Meeting	11
Legionella Survey Letter	14
Legionella Research Information Sheet	15
Blues On The Library Law	18
Dinner Business Meeting	20
Commit 2 Fit Calendar	24
The Waters' Backyard	26
Obituary	28
Practice Managers Meet with Meridian Health Plan	29

## REGULARS

President's Message	4
Director's Message	6
Do You Recognize This Doctor?	6
Classifieds	10
GCMS Meetings	31
Happy Birthday Doctor	31
Your \$\$\$ at Work	32

### Our Vision

That the Genesee County Medical Society maintain its position as the premier medical society by advocating on behalf of its physician members and patients.

### Our Mission

The mission of the Genesee County Medical Society is leadership, advocacy, education, and service on behalf of its members and their patients.

### PLEASE NOTE

The GCMS Nominating Committee seeks input from members for nominations for the GCMS Presidential Citation for Lifetime Community Service. The Committee would like to be made aware of candidates for consideration.

### THE BULLETIN

Published by the Genesee County Medical Society Publication Office

4438 Oak Bridge Drive, Suite B, Flint, Michigan 48532

Phone (810) 733-6260 Fax (810) 230-3737

By subscription \$60 per year. Member subscription included with Society dues. Contributions to

THE BULLETIN are always welcome. Forward news extracts or material of interest to the staff before the 5th of the month. All statements or comments in THE BULLETIN are the statements or opinions of the writers and are not necessarily the opinion of the Genesee County Medical Society.

This publication  
designed and  
edited by



[www.natnaskypublishing.com](http://www.natnaskypublishing.com) (248) 547-9749

## THE OPPORTUNITY TO SERVE

Let me start by saying that it is an honor and a privilege to become the President of Genesee County Medical Society (GCMS) for this upcoming year. Thank you for this opportunity to serve GCMS as well as the people of our community. Through the many years of its existence, there have been an abundance of capable leaders who have held this position. Most were dynamic, dedicated and hardworking individuals who left this organization in a better place than when they started. A number of those, I am pleased to add, continue to participate on the board today. Dr. John Hebert, our outgoing President, is one such leader. I would like to share a mention of thanks and appreciation to him and his family for his contributions this past year. I wish him well in his future endeavors and hope that he continues to contribute as he has on the GCMS Board. In this next year, I can only but hope to accomplish a fraction of what past Presidents have while cultivating a positive direction for this organizations future.

In my humble opinion, there is no greater contribution in life than in the service of others. It is also a large part of the mission of the GCMS. This is why many board, committee, and Alliance members along with the staffers voluntarily give their time and effort to this Medical Society. They all wish to improve the lives of those people the organization represents. Those same individuals give something of themselves in an attempt to 'pay it forward' and that in turn enriches the lives and practices of both the members and their patients.

The Medical Society, as Pete Levine will correctly assure, is a progressive, proactive group that has accomplished great things throughout its existence. In the relatively short period of time which I have been a member, the organization has successfully opposed dumping of Canadian trash in the county, created and adopted the Precautionary Principle (the standard by which products are measured for safety prior to their release and use) and had it accepted by the AMA, and was at the forefront of reporting Flint's lead-contaminated water along with Drs. Hannah-Attisha and Lawrence Reynolds who worked alongside of others developing safe drinking water guidelines for the county. The GCMS



*Gerald D. Natzke,  
DO, FAAEM, DIBEM*

Community and Environmental Health Committee is now working to create a study which may well provide greater insight on the benefit of treating those who carry higher toxic metal burdens, such as lead. Those were but just a few noteworthy examples. The bottom line is that the GCMS is constantly attempting to improve the health and well-being of the people of this county and state through the efforts of those who participate in its function.

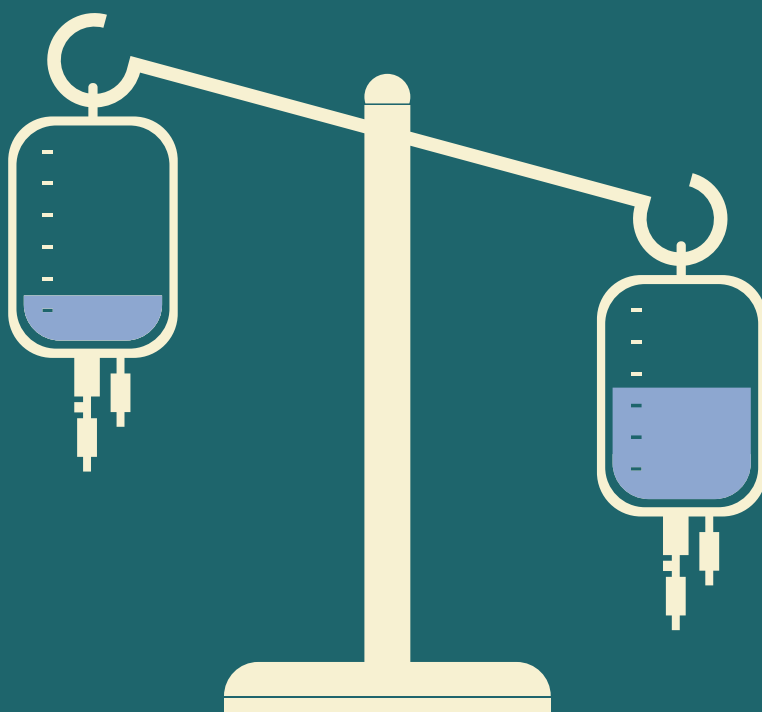
The GCMS has many attributes but the gold woven into its very fabric comes from the people who serve it. It is rich in leaders, intelligent, caring members, and a hard-working, dedicated staff. They truly care about not only the members they are paid to support but the citizens of this county. In the last 15 years, I can honestly say that I have truly enjoyed the experience of working with a wonderful group of caring people. It is extra work beyond my own busy practice and life and occasionally I have asked myself, "Why do I continue to work with this organization?" The answer is simple, my life is enriched by it. Working with people I enjoy while serving both the members and the patients they represent is a purposeful endeavor. Again, I as I've said, thank you for this opportunity.



# Working continuously to balance the **SCALES OF JUSTICE.**

## **We're taking the mal out of malpractice insurance.**

As a relentless champion for the practice of good medicine, we continually track, review, and influence federal and state bills on your behalf. All for one reason: when you can tip the scales in favor of the practice of good medicine, you get malpractice insurance without the mal. Find out more at [thedoctors.com](http://thedoctors.com)



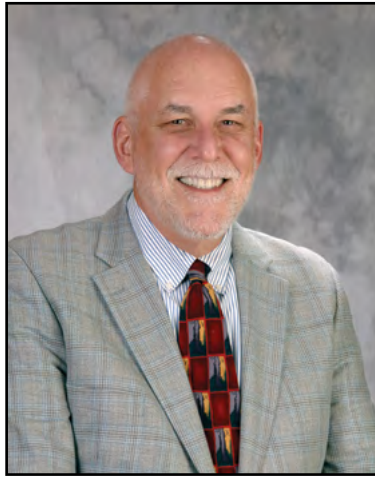
**THE DOCTORS COMPANY**

medical ~~mal~~ practice insurance

## A MONTH OF TRANSITION

November is the month of transitions for GCMS. This is the month where we honor Dr. John Hebert for his year as President. The annual presidential change is hard on staff. We develop relationships and genuinely enjoy working with each President. Dr. Hebert has been a quiet, dignified, strong leader. From his perspective, it's probably wonderful to have this year finished, but we want him to know that we are truly appreciative of his service. The Board of Directors has also expressed its appreciation for his presidency.

Don't forget to attend the Presidents Ball which will honor Dr. John Hebert! It will be an evening in an Enchanted Garden. November 18th at the Genesys Conference



*Peter Levine, MPH*

Center. Come and enjoy. Maybe you could be a sponsor too! The sponsorship levels are listed on page 13 in this issue of The Bulletin.

With this is also the month that we welcome Dr. Gerald Natzke as president. In addition to his noteworthy skill set and strong leadership characteristics, he also happens to be our very first osteopathic physician President. This would have been very noteworthy a few years ago. It is a positive point that this will occur without fanfare. Welcome, Dr. Natzke!

As always, we invite your participation and encourage you to become involved.

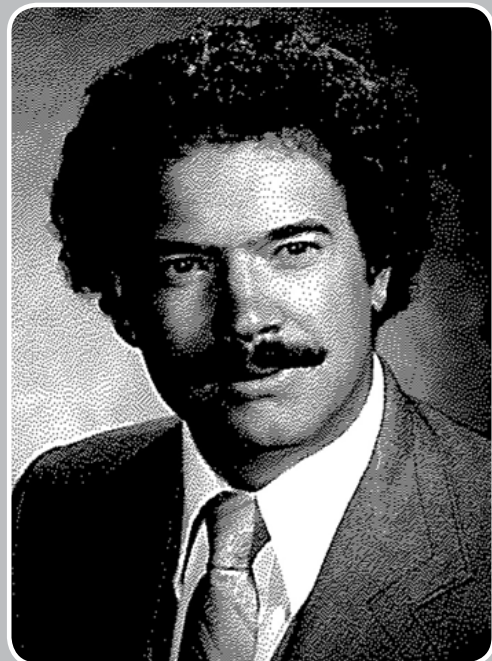
*2017 GCMS/GCMSA  
President's  
Ball*

*NOVEMBER 18<sup>TH</sup> @ 6:00 PM*

*Genesys Banquet  
& Conference Center*

*R.S.V.P Today*

*Do you recognize this  
DOCTOR?*



**Look for the Answer inside!**

## EDUCATION UPDATE

# New Requirements

MSMS has the new CME requirements available at the Annual Scientific Meeting – [MSMS.org/ASM](http://MSMS.org/ASM) – this fall; and, CME On-Demand modules are available at [MSMS.org/OnDemandWebinars](http://MSMS.org/OnDemandWebinars).

In December 2016, the Michigan Department of Licensing and Regulatory Affairs announced revised Medical Rules. With these new rules came new requirements for Continuing Medical Education. Significant changes to be aware of include:

- **Training Standards for Identifying Victims of Human Trafficking** – This is a one-time training that is separate from continuing education. Licensees renewing for 2017 must complete training by renewal in 2020; renewals for 2018 by 2021, and renewals for 2019 by 2022. Beginning in 2021, completion of the training is a requirement for initial licensure.
- **Education on Pain and Symptom Management** – Starting in December 2017, a minimum of three hours of continuing education shall be earned in the area of pain and symptom management.
- **Medical Ethics** – A minimum of one hour of continuing education shall be earned in the area of medical ethics.

## New Categories of CME

The Board of Medicine has updated the previous six Categories of Credit into two categories. As before, each medical doctor is required to complete 150 hours of continuing medical education approved by the board of which a minimum of 75 hours of the required 150 must be earned in Category 1 activities. The following is a breakdown of the two Categories for licensure:

### Category 1

- A. Activities with accredited sponsorship - Maximum 150 hours
- B. Passing specialty board certification or recertification – Maximum 50 hours
- C. Successfully completing MOC that does not meet requirements of (A) or (B) above. – Maximum 30 hours
- D. Participation in a board approved training program - Maximum 150 hours

### Category 2

- A. Clinical instructor for medical students engaged in postgraduate training program – Maximum 48 hours
- B. Initial presentation of scientific exhibit, poster or paper - Maximum 24 hours
- C. Publication of scientific article in a peer-reviewed journal - Maximum 24 hours
- D. Initial publication of a chapter or portion of a chapter in a professional health care textbook or peer-review textbook - Maximum 24 hours
- E. Participation in any of the following as it relates to the practice of medicine: -Maximum 18 hours
  1. Peer review Committee dealing with quality of patient care
  2. A Committee dealing with utilization review
  3. A health care organization committee dealing with patient care issues
  4. A national or state committee, board, council or association
- F. Until December 6, 2019, attendance at an activity that was approved by the Board of Medicine prior to December 6, 2016 - Maximum 36 hours
- G. Independently reading a peer-reviewed journal prior to December 6, 2016, that doesn't satisfy the requirements of Category 1, subdivision (A) - Maximum 18 hours
- H. Prior to December 6, 2016, completing a multi-media selfassessment program that doesn't satisfy the requirements of Category 1, subdivision (A) - Maximum 18 hours

# GERALD NATZKE, DO

**“THERE IS SO MUCH GOOD TO BE DONE”**

Your new President, Gerald Natzke, DO, will take the oath of office on November 18th at the Annual President’s Ball. If you were to seek a few words to describe Dr. Natzke, they might be “quiet, considerate, persistent, patient, and strong.” Dr. Natzke has co-chaired the Genesee County Medical Society Community and Environmental Health Committee for several years. His leadership skills have been evident throughout the Flint Water Crisis. Dr. Natzke is the rare physician who specializes in the environment’s impact on an individual’s health, resulting in the identification of symptoms and ailments that may not be commonly recognized. His skill set has been particularly useful during this complicated period when environmental health issues have been in the forefront of this community’s awareness. The Community and Environmental Health Committee meetings have on occasion become colloquia on environmental impacts on human beings. He has also served on the GCMS Board of Directors for over a decade.

Dr. Natzke has a lot of other leadership experience. He served as President of the



American Academy of Environmental Medicine. He has also shepherded his practice from one that is insurance-based, to one that accepts no insurance. So, he brings to his leadership position, a very interesting background.

The basics about Dr. Natzke are that he graduated with a B.S. from Michigan State University in 1978. He graduated from the Chicago College of Osteopathic Medicine in 1982. He performed a rotating internship at Flint Osteopathic Hospital from 1980 to 1983. Dr. Natzke’s specialties include Otolaryngic allergy and

Environmental medicine. He is board certified in both. He performed his fellowships with the American Academy of Otolaryngic Allergy and the American Academy of Environmental Medicine. He is a member of both osteopathic and allopathic organized medicine as well as several specialty societies. He serves as an Associate Clinical Professor of Michigan State University College of





Osteopathic Medicine. His practice is now located at 9475 N. Holly Road, Suite 205, in Grand Blanc. His wife, Lisa, serves as his practice manager and also provides nutritional education to their patients.

Dr. Natzke realized as a junior high school student, that he wanted to become a physician. He came from a blue-collar family but had an uncle and several cousins who were physicians. Being academically strong in sciences, he saw medicine as a good fit for his career. He describes that realization as “the clouds parting.”

As a Michigan State University student, he took psychology and science courses and then went to medical school. After a few years in practice, he attended a conference on allergy which stimulated him. Then he went to an ENT meeting and it opened his eyes. He realized that there were answers to questions that he had never heard before. This was thrilling and opened, for him, a new way of looking at medicine.

He has been involved in bringing integrative medicine into the community and has been instrumental in the formation of the Integrative Medicine Consortium, a national coalition of integrative medicine organizations. He has served as Chair of this coalition of organizations.

Some know him for performing chelation, which is relatively a new tool in his skill set. Dr. Natzke participated in the NIH’s TACT 1 study of chelation, the results of



which were published in the Journal of the American Medical Association (JAMA). This study showed a marked drop in morbidity and mortality following a heart attack and paralleled bypass surgery. The study showed that chelation had fewer side effects than placebo. He is now involved in the follow-up TACT 2 study, which is also NIH

funded.


Dr. Natzke notes that his family has always been supportive of his love of medicine. His family is the reason he came back to Genesee County after his education. His wife Lisa is an MA and has experience managing other physicians’ offices. Each time he talks about her management of his practice, he says “she’s really great at it and is really good with people. She has an almost perfect memory.”. He also noted that she’s a great negotiator. He has two stepchildren, Jake, who is 25, and Tyler, who is 23. He

**HURLEY MEDICAL CENTER PEDIATRIC ONCOLOGY UNIT**

**Coordinated Care, Close to Home**

**KH** was a 12-year-old girl living in Ontario, Canada with her father. Her parents were divorced and her mother moved to Pinconning, Michigan. KH was diagnosed with cerebellar Medulloblastoma in 2011. She received her brain radiation at Victoria Children’s Hospital and needed to start chemotherapy. It was agreed that her mother in Michigan could provide the most supportive care throughout her treatment so KH moved to Pinconning. She was registered on the Children’s Oncology Group (COG) Protocol and that is how she came to be treated at Hurley Medical Center and counseled periodically by a child psychologist. KH received the same level of quality care much closer to her new home.

[hurleychildrens.com](http://hurleychildrens.com)



**CONTINUED FROM PAGE 9**

describes them both as having hearts of gold. He said that he relishes the time he spends with them.

Dr. Natzke's hobbies include medical politics, reading, sports, travel, and playing with his dogs. When talking about the practice of medicine, he said it has been a really good life and for 34 years it has been his passion.

Dr. Natzke is committed to working to create positive change in our community. One such endeavor he has enjoyed is supervising the Special Olympics Physicals for Area 13 the last 34 years. The kids and staff of the Knopf Learning Center have been wonderful to work with. He constantly reminds people that the Genesee County Medical Society has been a major catalyst for change. He has been very aware of the role that GCMS takes in public health and community health arenas as well as the advocating on behalf of the practice of medicine.

Dr. Natzke wants everyone to participate in GCMS, and to do so for a long time. "If you do, you will see the inner workings of the Medical Society. You will make friends, and by working together you will create change." Dr. Natzke was surprised when asked to become President of the Genesee County Medical Society but also honored. "There is so much good to be done".



## *Announcement*

**GCMS members now entitled to a 15% discount on automobile and homeowners insurance.**

**For details, contact:**

**POTTER & ROOSE  
INSURANCE**

**810-767-8590**

**Providers of insurance for the GCMS & its members for 50 years.**

**906 Mott Foundation Bld., Flint MI 48502**

## CLASSIFIEDS

### **READY TO MOVE IN 4,500 SQ. FT.**

Custom designed physician office. Available for rent or purchase in Stone Bridge office complex off Linden Rd. across from Genesee County Medical Society. New roof and heating/cooling.

**Contact 810-610-0965**

### **AUTOCLAVE NEEDED**

by not-for-profit urgent care center. Please contact Brenda at [bcraft@gcms.org](mailto:bcraft@gcms.org) or call (810) 232-2710.

### **PHYSICIANS NEEDED**

at the Emergency Medical Center of Flint Various shifts available for part-time, as well. Must be willing to do minor stitches, infants & children, splinting, and minor eye & ear procedures. This is a classic urgent care much like family practice. Hours of operation Mon, Wed: 10am-9pm, Tue, Thur, Fri, Sat: 12pm-9pm, closed on major holidays Located at 2284 S. Ballenger Hwy., Suite 2, Flint, 48503.

**Contact Pete Levine at 810-733-9925.**

**Check Out Our Website [www.gcms.org](http://www.gcms.org)**



## OCTOBER LEGISLATIVE LIAISON COMMITTEE MEETING

On October 2nd, the Genesee County Medical Society Legislative Liaison Committee met with Representative Tim Sneller, Senators Jim Ananich, and Dave Robertson. In addition to the Committee, Gary Jones from the office of Congressman Kildee, Colin Ford of the Michigan State Medical Society. Several residents and physicians practice managers were also present.

The Committee reviewed, in depth, issues surrounding Senate bills 166 and 274, which address prescription drug diversion. These bills would severely impact physicians' daily practice. Senate Bill 166 would mandate a request for a MAPS check for every single controlled substance prescription from two through five. This would make MAPS a law-enforcement tool.

Senate Bill 274 limits the number of days a physician can prescribe for a patient. There are no exceptions.

GCMS members explained how both of these bills

would create major problems in the practice of medicine.

Auto no-fault reform was also discussed in depth. Colin Ford noted that the process for completing legislation is in flux. There are so many influences pushing reforms in various directions. One of the sure outcomes if rates are lowered, would be the shifting of costs from auto insurance to Medicaid. This would have a severe impact on care.

Briefly discussed was House Bill 4055, which would allow pharmacists to refuse to fill prescriptions that they have doubts about. MSMS has proposed an amendment that would require pharmacists to notify physicians if the pharmacy refuses to prescribe.

Since a November meeting would fall one day before elections, it is not practical. The next meeting of the Committee will take place on December 4th, 2017, at the GCMS offices.





2017 GCMS/GCMSA President's Ball

*"An Enchanted Garden"*

*In honor of Dr. John Hebert, III*

Saturday, November 18, 2017, 6:00pm

Genesys Conference & Banquet Center

801 Health Park Boulevard, Grand Blanc, MI 48439

All ages welcome!

*RSVP by November 9, 2017*

at [ssmith@gcms.org](mailto:ssmith@gcms.org) or 810-733-9923

Ticket Prices:

Ages 13 & up, \$85

Ages 3-12, \$35

Ages 2 & under, free

---

Multiple levels of sponsorship are also available

---

**Valet Parking Available**

**Black Tie Optional - Relaxed Business Attire Welcomed**



### *Towering Oak* - \$20,000 Level Sponsor

Includes Four Tables of 8 (32 seats), *Three Full-Page Ads\** in January, February, and March 2018 GCMS Bulletins, a link to your website from each ad, special mention in advertising and promotions relating to the Presidents' Ball, gracious acknowledgement in the event program and at the podium, and three 2018 sponsorships of GCMS Dinner Business Meetings.

### *Elegant Evergreen* - \$10,000 Level Sponsor

Includes Two Tables of 8 (16 seats), *One Full-Page Ad\** in the January 2018 GCMS Bulletin, a link to your website from your ad, special mention in advertising and promotions relating to the Presidents' Ball, acknowledgement in the event program and at the podium, and a sponsorship of a Dinner Business Meeting.

### *Pretty Perennial* - \$5,000 Level Sponsor

Includes seating at one table of 8, *One Full-Page Ad\** in the January 2018 GCMS Bulletin, a link to your website from your ad, special mention in advertising and promotions relating to the Presidents' Ball, and acknowledgement in the event program and at the podium.

### *Botanical Beauty* - \$2,500 Level Sponsor

Includes seating for 6, *One Half-Page Ad\** in the January 2018 GCMS Bulletin, special mention in advertising and promotions relating to the Presidents' Ball, and acknowledgement in the event program and at the podium.

### *Koi Pond* - \$1,500 Level Sponsor

Includes seating for 4, *One Quarter-Page Ad\** in the January 2018 GCMS Bulletin, special mention in advertising and promotions relating to the Presidents' Ball, and acknowledgement in the event program and at the podium.

### *Fresh Bouquet* - \$750 Level Sponsor

Includes seating for 2, *Business Card Size Ad\** in the January 2018 GCMS Bulletin, special mention in advertising and promotions relating to the Presidents' Ball, and acknowledgement in the event program and at the podium.

### *Gardeners Thumb* - Generous Donation

Includes seating for 2 (over \$500), special mention in advertising and promotions relating to the Presidents' Ball, and acknowledgement in the event program and at the podium.

\*GCMS will place ads at its discretion upgrading to premium placement if possible.



4438 Oak Bridge Dr., Suite B - Flint, MI 48532-5467  
(810) 733-9923 - Fax: (810) 230-3737 - [www.gcms.org](http://www.gcms.org)

Dear members of the Genesee County Medical Society,

I would like to invite you to participate in a research study conducted as part of our partnership with Wayne State University. This partnership aims to reduce the incidence of Legionnaires' disease as well as related hospitalizations and deaths. An element of this research study is to administer a Legionnaires' disease focused survey to the physician community. It is important for us to better understand current practices related to the clinical diagnosis and treatment of Legionnaires' disease. As such, this survey will identify the knowledge, attitudes and clinical practices regarding this illness from physicians across all specialties. The results of this study will be used to develop educational and prevention strategies that help reduce mortality due to *Legionella pneumophila* infection.

The survey contains 13 questions and will take no longer than five minutes to complete. Survey participants are eligible to receive one of ten \$25 gift certificates at the point of study completion. You can access the survey by clicking the link below. We also invite you to review the attached information sheet regarding the project before taking the survey.

Recently, you were sent a copy of the Legionella Guidelines for Clinicians updated this year. Please review these guidelines and keep for your future reference.

Thank you for your commitment to the health of this community.

**Survey link:** [https://waynestate.az1.qualtrics.com/jfe/form/SV\\_4G8tNvJT3VeGfvn](https://waynestate.az1.qualtrics.com/jfe/form/SV_4G8tNvJT3VeGfvn)

Sincerely yours,

John Hebert, MD  
President

Organized Medicine's Leading Edge

Mission - Leadership, advocacy, and service on behalf of its members and their patients.

Vision - That the Genesee County Medical Society maintain its position as the premier medical society by advocating on behalf of its physician members and patients.

## Research Information Sheet

Title of Study: *FACHEP Phase II Extension: Legionellosis-focused clinician evaluation and outreach*

Principal Investigator (PI): Dr. Paul Kilgore  
Department of Pharmacy Practice  
Wayne State University  
313-577-1215

Funding Source: State of Michigan

### Purpose:

You are being asked to be in a research study to assess current knowledge and practices concerning Legionellosis in Genesee and Wayne County because you are a health-care provider in one of these areas. This study is being conducted by Wayne State University faculty and staff in Genesee and Wayne County. The estimated number of study participants enrolled across all sites is 1300.

The purpose of this study is to help citizens and health-care providers reduce the risk of Legionellosis and its incidence in Genesee and Wayne County. Over the past few years the number of Legionnaire's disease (LD) cases has dramatically increased in Michigan. As the number of LD cases continues to rise, it is important that we continue to develop preventive strategies to decrease risk of LD. We will evaluate the status of physicians' knowledge, attitudes, and practices in regards to recent outbreaks of Legionellosis and their use of the Legionellosis Guidelines for Clinicians and Laboratories. We will increase awareness of symptoms and risk factors associated with Legionellosis, work with health service providers to identify potential cases, and raise awareness on the importance of serogroup identification to better inform patient-clinician conversations in Genesee and Wayne County.

### Study Procedures

If you take part in the study, you will be asked to complete a short 5-minute survey. Although it is not mandatory for you to participate, you will be asked to fill out a survey with questions pertaining to the Legionellosis Guidelines for Clinicians and Laboratories. It is not mandatory to have received or have read these guidelines to participate.

### Benefits

Information from this study may benefit other people (society) now and in the future.

### Risks

By taking part in this study, you may experience the following risks:

- Breach in confidentiality

To minimize this social risk, surveys will be deidentified using codes. The master list of these identifiers will be kept by select key personnel, encrypted, and kept separate from the survey responses. The identifiers will not be linked to survey responses and will be destroyed upon study completion.

### Costs

There will be no costs to you for participation in this research study.

Submission/Revision Date: 04/18/2017  
Protocol Version #: 2

Page 1 of 2

Form Date: 04/2015

**Compensation**

For taking part in this research study you will be eligible to receive one of 10 \$25.00 store gift cards to compensate for your time and inconvenience.

**Confidentiality:**

You will be identified in the research records by a code name or number.

**Voluntary Participation /Withdrawal:**

Taking part in this study is voluntary. You are free to not answer any questions or withdraw at any time. Your decision will not change any present or future relationships with Wayne State University or its affiliates.

**Questions**

If you have any questions about this study now or in the future, you may contact Dr. Paul Kilgore or one of research team members at the following phone number 313-577-1215. If you have questions or concerns about your rights as a research participant, the Chair of the Institutional Review Board can be contacted at (313) 577-1628. If you are unable to contact the research staff, or if you want to talk to someone other than the research staff, you may also call the Wayne State Research Subject Advocate at (313) 577-1628 to discuss problems, obtain information, or offer input.

**Participation**

By completing the survey, you are agreeing to participate in this study.

The data that you provide may be collected and used by Qualtrics as per its privacy agreement.

TRUST EXPERIENCE. COUNT ON COMMITMENT.



Business Law • Employment Law • Insurance Defense • General Litigation  
 Medical Malpractice • Municipal Law • Probate, Estate and Elder Law  
 Real Estate • Wealth Transfer • Workers' Compensation

**CC&G**  
 CLINE, CLINE & GRIFFIN  
 A PROFESSIONAL CORPORATION

Walter P. Griffin • Timothy H. Knecht • Jose' T. Brown • J. Brian MacDonald  
 Barbara J. Hunyady • Megan R. Mulder • Brandon K. Wagner • Nancy K. Chinonis

Attorneys at Law • Since 1928 • [www.ccglawyers.com](http://www.ccglawyers.com) • 810.232.3141

2017  
 GCMS/GCMSA  
*President's  
 Ball*  
 NOVEMBER 18<sup>TH</sup>  
 @ 6:00 PM  
*Genesys Banquet  
 & Conference  
 Center*  
 R.S.V.P  
 Today





faith care UNITE heart NOW  
connect family give HELP  
support SHARING  
HOPE abundance community FRIEND  
inspire COMPASSION GIFT  
humanity  
PEACE  
vision THANK YOU blessings  
kindness LOVE unconditional  
purpose DONATE

## Medical Society Foundation

Consider a donation to the Medical Society Foundation for all of your holiday giving. What a wonderful way of expressing your holiday sentiments while supporting important health related causes.

The Medical Society Foundation has been coordinating physician giving in Genesee County since 1987. This holiday season, why not use the Foundation to make sure your gifts to family, friends and colleagues help to improve the health and well-being of our community.

By giving to the Medical Society Foundation, you receive a great year-end tax benefit at the same time that you tell others how much their health – really means to you.

The Medical Society Foundation funds have been used to support the charitable activities of the Genesee County Medical Society.

Contributions can also be made in memory of an individual or to honor someone.

**For questions or information on how your gift can help support the charitable activities of your Medical Society Foundation contact Peter A. Levine, MPH at (810) 733-9925 or at [plevine@gcms.org](mailto:plevine@gcms.org).**

*Medical Society Foundation Mission Statement: The Medical Society Foundation is organized and does operate for the purpose of supporting continuing medical education and health-related charitable activities that further the cause of medicine.*

*Mail your donations to:*

Medical Society Foundation  
4438 Oak Bridge Drive, Suite B  
Flint, MI 48532-5467

# BLUES ON THE LIBRARY LAWN EVENT

*Written by Peter Levine, MPH*

Flint has some wonderful cultural events going on. The monthly art walks in downtown Flint, the Annual Buckham Alley Festival, and the Flint Art Fair are all examples of events that are fun to attend. Each of these events showcase the community in a very positive and unique way. There is one event that I never see medical families attending. This is the Blues on The Library Lawn event that takes place in late August each year. It features an entire day of blues music.

When you are tired of listening to the music, you can go to any of the museums that are within a one-minute walk. It is enjoyable to watch people who are so into the music. This is not a big blues town, but the turnout for

this annual event is substantial. If you have never been to this community event, you should try it. It is a true cultural experience, held at the Flint Cultural Center, and it reflects beautifully on the City of Flint.



# Easy Ways to Donate to the Medical Society Foundation:

The Medical Society Foundation is engaged in a Capitol Campaign. The purpose of the Campaign is to grow the corpus to support the charitable activities of the Genesee County Medical Society. Those activities include public and community health, support for the underserved, and wellness initiatives.

To continue its good work, the Medical Society Foundation is asking you to consider leaving a legacy gift to the Foundation. If all, or even a significant portion of our membership left just a small part of our estates to the Foundation, the Foundation could continue helping this community in so many ways, by supporting the Medical Society.

To make a gift, simply use these words:

In your Trust, *"Grantor directs Trustee to distribute \_\_\_% of all assets then held in Trust or later added to this Trust to the Medical Society Foundation, to be held in an endowed fund and used in the discretion of its then existing board of directors in furtherance of the purposes of the Foundation"*

In your Will, *"I give, devise and bequeath \_\_\_% of my Estate to the Medical Society Foundation, to be held in an endowed fund and used in the discretion of its then existing Board of Directors in furtherance of the purposes of the Foundation"*

While this is not a subject that is comfortable to broach, it is an opportunity to support the Foundation which supports the Medical Society's charitable activities on behalf of the membership. Please give. You can give via a trust or will. You can give from your IRA. You can give appreciated stock, and you can give cash. Please support the organization which does so much on behalf of the medical community and the patients we serve.



**Don't Forget!**  
**Donations are tax deductible!**

**Please feel free to contact Peter Levine, Executive Director at 810-733-9925 or [plevine@gcms.org](mailto:plevine@gcms.org).**

# Genesee County Medical Society Dinner Business Meeting Minutes September 7, 2017

## **I. Call to Order:**

The meeting was called to order at 6:30 p.m. by John Hebert, III, MD, President, in the dining room of the Flint Golf Club.

## **II. Introduction of Guests:**

Dr. Hebert introduced the guests in attendance along with the speakers for the evening, Drs. Renee Miskimmin, Chief Medical Officer, Meridian Health Plan, James Forshee, Senior VP of Medical Affairs and Chief Medical Officer, Priority Health, Marc Keshishian, Senior Vice President and Chief Medical Officer, Blue Care Network, Taft Parsons, Vice President and Senior Medical Director, Molina Healthcare, Tom Simmer, Senior Vice President and Chief Medical Officer, Blue Cross Blue Shield.

He also introduced Asif Ishaque, MD, President of PMC/ACO, Lori Kunkle, Chief Operating Officer of the Greater Flint Health Coalition, along with Rebecca Blake and Stacie Saylor, of the Michigan State Medical Society.

Dr. Hebert then welcomed Julie Forbush of the Flint Area School Employees Credit Union, Tony Burks of the United Way of Genesee County, Shannon Wejrandt of Health Alliance Plan, and Katanya Alaga of Wayne State University/FACHEP, to the podium to explain their relationships with GCMS.

## **III. Review of Minutes from May 4, 2017 Dinner Business Meeting:**

**Motion: That the minutes of the May 4, 2017 Dinner Business Meeting be approved as published in the June 2016 Bulletin. The Motion Carried.**

## **IV. Presentation of Awards**

### A) Hero of Medicine Award

Dr. Mona Hanna-Attisha was presented with the Genesee County Medical Society Hero of Medicine Award. Dr. Hebert noted that the choice of awardee, this year, was easy. Dr. Hanna-Attisha led the seminal research which exposed the lead issue in Flint. She then stood up to governmental aggression as well as personal and professional attacks. For speaking out in local, state, and national, and international venues, she has been able to keep the Flint Water Crisis in front of everyone. She courageously advocated for children impacted by the Water Crisis. Dr. Hanna-Attisha thanked the Medical Society for the honor, and noted that the Water Crisis has shown the importance of physicians standing up for the health of their patients individually, and on a population basis.

### B) Michigan State Medical Society Community Service Award

Dr. Hebert then presented the Michigan State Medical Society Community Service awards to four GCMS and GCMSA members. Dr. Walter Barkey was nominated for his work with local charities and for leading the skin rash study performed with several state and federal agencies during the Water Crisis. Doctors Balvant and Bhadrabala Ganatra were nominated for their service locally and overseas. Mrs. Cheryl Thoms was nominated for her work on a local basis which directly impacted charities and facilitated others involvement in charitable and public health initiatives.

## **V. Nominating Committee Report**

Dr. Shafi Ahmed, Committee Chair, reviewed the Nominating Committee report published in the August 2017 issue of the GCMS Bulletin. A printed Slate of Nominees was also made available on each table.

**Motion: That the Slate of Nominees prepared by the Nominating Committee and approved by the GCMS Board of Directors, and published in the August 2017 Bulletin be approved by acclamation. The motion carried.**

Dr. Ahmed congratulated Dr. Ed Christy, who will serve as President Elect when Dr. Gerald Natzke becomes President in November.

# Genesee County Medical Society Dinner Business Meeting Minutes September 7, 2017

## The 2017-2018 SLATE OF NOMINEES FOR GCMS OFFICES was approved as follows:

PRESIDENT- ELECT:  
Ed Christy, MD

TREASURER:  
Ethiraj Raj, MD

### DELEGATES:

Shafi Ahmed, MD  
Laura Carravallah, MD

Mona Hardas, MD  
Ed Christy, MD

Nita Kulkarni, MD  
Gerald Natzke, DO

Raymond Rudoni, MD  
Tarik Wasfie, MD

### ALTERNATE DELEGATES:

Khalid Ahmad, MD  
Michael Danic, MD  
Asif Ishaque, MD

Farhan Khan, MD  
Sayed Osama, MD  
Brenda Rogers-Grays, DO

Robert Soderstrom, MD  
Amanda Winston, MD

### FINANCE COMMITTEE:

Deborah Duncan, MD

John Waters, MD

### INTERNATIONAL MEDICAL GRADUATES DELEGATION:

Shagufta Ali, MD  
Qazi Azher, MD  
Ed Christy, MD  
Hytham Fadl, MD  
Ayman Haidar, MD

Mona Hardas, MD  
Rima Jibaly, MD  
Ahmad Kaddurah, MD  
Kavitha Kesari, MD

VJ Naraparaju, MD  
Rama Rao, MD  
Venkat Rao, MD  
Jawad Shah, MD

Mahesh Sharman MD  
Parul Sud, MD  
Tarik Wasfie, MD  
Sania Zainuddin, MD

### YOUNG PHYSICIANS SECTION:

Amanda Winston, MD – Delegate  
Manisha Kia, DO – Alternate Delegate

### HERO OF MEDICINE AWARD:

Cathy Blight, MD

### PRESIDENT FOR A DAY AWARD:

Eyassu Habte-Gabr, MD

### MSMS COMMUNITY SERVICE AWARD:

Parul Sud, MD

### MSMS COMMUNITY SERVICE AWARD:

Walter Barkey, MD

BB Ganatra, MD

BK Ganatra, MD

Cheryl Thoms – GCMSA

## VI. Introduction of Speakers

Dr. Hebert introduced each of the presenting speakers for the evening who engaged in a robust exchange with physicians.

## VII. Town Hall Meeting

Each of the Chief Medical Officer's entertained questions following their presentations and received a significant input from members regarding issues which are problematic, as well as ideas for solving some of the problems that the insurance companies are having.

## VIII. Next Meeting:

The next General Membership Meeting will be the Presidents' Ball on November 18, 2017 at Genesys Conference & Banquet Center and the next Town Hall Dinner Business Meeting is scheduled for February 1, 2018.

## IX. Adjournment:

No further business appearing. The meeting was adjourned at 8:45 p.m.

Submitted by,  
Peter Levine, MPH  
Executive Director

# A Dialogue with the Major Payer's CMO's

## September 7, 2017, Town Hall







# November 2017 Fitness Calendar

**FREE! Commit to Fit! Class Schedule**

Commit to Fit offers fitness classes at **no cost** to all individuals who live or work in Flint and Genesee County. Fitness Centers require participants to be age 18 and older, other locations are open to all ages. See back side for details. **Click**

**HERE to Access the Nutrition Education & Resources Calendar**

	MONDAY	TUESDAY	WEDNESDAY	THURSDAY	FRIDAY	SAT
<b>NOVEMBER 2017</b>			<sup>1</sup> <b>Enhance Fitness</b> Hasselbring Senior Center 9:00 a.m. <b>Arthritis Foundation Exercise Program</b> Forest Township Senior Center 12:30-1:30pm <b>Zumba Gold (Beginner)</b> GAC 5:30 p.m. <b>Community Yoga</b> Crim Fitness 5:15-6:15pm	<sup>2</sup> <b>Enhance Fitness</b> Flint Farmers' Market 10:00 a.m. <b>Arthritis Foundation Exercise Program</b> Grand Blanc Senior Center 10-11:00am  <b>Basic Yoga</b> IHFC 6:45 p.m.	<sup>3</sup> <b>Enhance Fitness</b> Hasselbring Senior Center 9:00 a.m.  <b>Arthritis Foundation Exercise Program</b> Swartz Creek Senior Center 11am-12pm	<sup>4</sup> <b>Health &amp; Wellness Fair</b> Insight Health & Fitness Center 1100am-3:00pm
	<sup>6</sup> <b>Enhance Fitness</b> Hasselbring Senior Center 9:00 a.m.  <b>Senior Stretch</b> YMCA Downtown 10am  <b>Aqua Fitness</b> U of M-Flint Rec 5:30-6:30 pm	<sup>7</sup> <b>Enhance Fitness</b> Flint Farmers' Market 10:00 a.m.  <b>Splash Bash</b> U of M-Flint Rec 11:00 am  <b>Arthritis Foundation Exercise Program</b> Grand Blanc Senior Center 10:00-11:00am	<sup>8</sup> <b>Enhance Fitness</b> Hasselbring Senior Center 9:00 a.m.  <b>Arthritis Foundation Exercise Program</b> Forest Township Senior Center 12:30-1:30pm  <b>Zumba Gold</b> GAC 5:30 p.m.	<sup>9</sup> <b>Enhance Fitness</b> Flint Farmers' Market 10:00 a.m.  <b>Arthritis Foundation Exercise Program</b> Grand Blanc Senior Center 10-11:00am  <b>Basic Yoga</b> IHFC 6:45 p.m.	<sup>10</sup> <b>Enhance Fitness</b> Hasselbring Senior Center 9:00 a.m.  <b>Arthritis Foundation Exercise Program</b> Swartz Creek Senior Center 11am-12pm	<sup>11</sup>
	<sup>13</sup> <b>Enhance Fitness</b> Hasselbring Senior Center 9:00 a.m.  <b>Senior Stretch</b> YMCA Downtown 10:00 a.m.  <b>Aqua Fitness</b> U of M-Flint 5:30pm	<sup>14</sup> <b>Enhance Fitness</b> Flint Farmers' Market 10:00 a.m.  <b>Splash Bash</b> U of M-Flint Rec 11:00 am  <b>Arthritis Foundation Exercise Program</b> Grand Blanc Senior Center 10-11:00am	<sup>15</sup> <b>Enhance Fitness</b> Hasselbring Senior Center 9:00 a.m.  <b>Arthritis Foundation Exercise Program</b> Forest Township Senior Center 12:30-1:30pm  <b>Zumba Gold (Beginner)</b> GAC 5:30 p.m.	<sup>16</sup> <b>Enhance Fitness</b> Flint Farmers' Market 10:00 a.m.  <b>Arthritis Foundation Exercise Program</b> Grand Blanc Senior Center 10:00-11:00am  <b>Basic Yoga</b> IHFC 6:45 p.m.	<sup>17</sup> <b>Enhance Fitness</b> Hasselbring Senior Center 9:00 a.m.  <b>Arthritis Foundation Exercise Program</b> Swartz Creek Senior Center 11am-12pm	<sup>18</sup>
	<sup>20</sup> <b>Enhance Fitness</b> Hasselbring Senior Center 9:00 a.m.  <b>Senior Stretch</b> YMCA Downtown 10:00  <b>Aqua Fitness</b> U of M-Flint Rec Center 5:30-6:30 pm	<sup>21</sup> <b>Enhance Fitness</b> Flint Farmers' Market 10:00 a.m.  <b>Splash Bash</b> U of M-Flint Rec 11:00 am  <b>Arthritis Foundation Exercise Program</b> Grand Blanc Senior Center 10:00-11:00am	<sup>22</sup> <b>Enhance Fitness</b> Hasselbring Senior Center 9:00 a.m.  <b>Arthritis Foundation Exercise Program</b> Forest Township Senior Center 12:30-1:30pm  <b>Zumba Gold (Beginner)</b> GAC 5:30 p.m.	<sup>23</sup> <b>Enhance Fitness</b> Flint Farmers' Market 10:00 a.m.  <b>Arthritis Foundation Exercise Program</b> Grand Blanc Senior Center 10:00-11:00am  <b>Basic Yoga</b> IHFC 6:45 p.m.	<sup>24</sup> <b>Enhance Fitness</b> Hasselbring Senior Center 9:00 a.m.  <b>Arthritis Foundation Exercise Program</b> Swartz Creek Senior Center 11am-12pm	<sup>25</sup>
	<sup>27</sup> <b>Enhance Fitness</b> Hasselbring Senior Center 9:00 a.m.  <b>Senior Stretch</b> YMCA Downtown 10:00  <b>Aqua Fitness</b> U of M-Flint Rec Center 5:30-6:30 pm	<sup>28</sup> <b>Enhance Fitness</b> Flint Farmers' Market 10:00 a.m.  <b>Splash Bash</b> U of M-Flint Rec 11:00 am  <b>Arthritis Foundation Exercise Program</b> Grand Blanc Senior Center 10:00-11:00am	<sup>29</sup> <b>Enhance Fitness</b> Hasselbring Senior Center 9:00 a.m.  <b>Arthritis Foundation Exercise Program</b> Forest Township Senior Center 12:30-1:30pm  <b>Zumba Gold (Beginner)</b> GAC 5:30 p.m.	<sup>30</sup> <b>Enhance Fitness</b> Flint Farmers' Market 10:00 a.m.  <b>Arthritis Foundation Exercise Program</b> Grand Blanc Senior Center 10:00-11:00am  <b>Basic Yoga</b> IHFC 6:45 p.m.		

MIC-6C3 November.Fitness.Class.Calendar.102317.HB



# November 2017 Fitness Calendar

FREE! Commit to Fit! Class Schedule

## Class Descriptions & Locations

### Basic Yoga (1 hour)

This class is a balanced flow of postures designed to build stamina, strength, and flexibility while promoting weight loss and general stress relief.

#### Insight Health & Fitness Center (IHFC)

Formerly Hurley Health & Fitness Center

4500 S. Saginaw St

Flint, MI 48507

(810) 893-6489



**Community Yoga (1 hour)** – This is a yoga class for all levels. Please wear comfortable and loose-fitting clothing. Some yoga mats will be available to borrow as well

Mindfulness@crim.org  
(810)-235-7461



#### Crim Fitness Foundation

452 Saginaw Street Downtown Flint

**Senior Stretch (1 hour)** - This class will help improve overall strength and flexibility. The class is led by a certified senior fitness instructor who will guide you through the exercises at your own pace. This class is perfect for all ability levels.

#### YMCA Downtown Flint

411 E. 3<sup>rd</sup> Street

Flint, MI 48503

(810) 232-9622



## Healthy Holidays Challenge!

The 2017 Healthy Holidays Challenge is a one-month physical activity challenge. The Commit to Fit! Healthy Holidays Challenge is a four-week individual challenge to encourage participants to practice daily activities to be more active, practice mindfulness, and promote wellness to others. All individuals who live or work in Genesee County can participate at no cost. November 13<sup>th</sup> – December 10<sup>th</sup> 2017

**CHALLENGE GOAL: Log 2,000 Commit to Fit! Wellness Points**

Log on to [commit2fit.com](http://commit2fit.com). You can sign up anytime! Earn points for being active!

**Aquafitness/Splash Bash**- An invigorating water workout. Ideal for all fitness levels. No swimming required

#### University of Michigan-Flint Rec Center

401 Mill Street, Flint, MI 48502

(810) 762-3441



**Enhance Fitness (1 hour)** – A fun, energizing class geared toward improving overall functioning and well-being. Improve your cardiovascular fitness, strength, flexibility and balance!



#### TIMES & LOCATIONS:

##### Hasselbring Senior Center

1002 Home Ave. Flint, MI

(810) 766-7128 Mon, Weds, & Fri 9-10 am

##### Flint Farmers' Market- Tuesdays &

Thursdays 10:00-11:00 am

300 E. First St Flint, MI

(810) 232-1399



**Zumba Gold (1 hour)** - A less intense version of the classic Zumba. This class offers fun music to keep the excitement high while keeping the impact low.

#### Genesys Athletic Club (GAC)

801 Health Park Blvd

Grand Blanc, MI 48439



**Arthritis Foundation Exercise Program (1 hour)** A low-impact physical activity program proven to reduce pain and decrease stiffness. The routines include gentle range-of-motion exercises that are suitable for every fitness level!

#### Grand Blanc Senior Center:

Tuesday & Thursdays 10am – 11am

#### Swartz Creek Senior Center:

Fridays 11am – 12pm



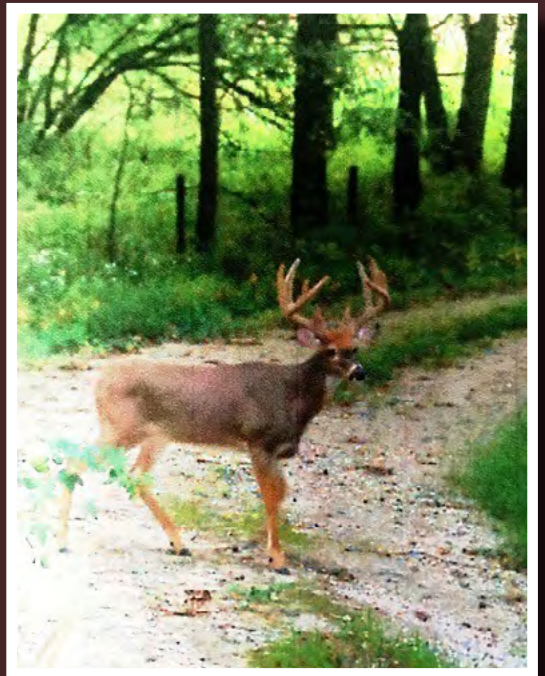
#### Forest Township Senior Center:

Wednesdays 12:30pm–1:30pm



GENESEE COUNTY PARKS  
Get away. Right away.

Questions?  
Email  
[commit2fit@flint.org](mailto:commit2fit@flint.org)





# The Waters' Backyard

*Photo Credit: John Waters, MD*



## OBITUARY



# David E. Ojeda, MD

Longtime member David Ojeda, MD, passed away on October 2, 2017, at the age of 83.

Dr. Ojeda was born in Columbia. He received his medical degree at University of Nuevo Leon in Monterrey Mexico. Dr. Ojeda emigrated to Flint in 1963. He served internship at Wayne County General Hospital. After completing a residency in Anesthesiology at Henry Ford Hospital in 1968 he returned to the Flint area where he founded Anesthesia Associates of Southeastern Michigan. He practiced in the greater Flint area for 39 years until his retirement in 2007, at the age of 75.

Dr. Ojeda practiced at Hurley Medical Center, McLaren Hospital, St. Joseph Hospital and Genesys. Dr. Ojeda was a member of the Genesee County Medical Society, Michigan State Medical Society, American Medical Association, American Society of Anesthesiology, and Michigan Society of Anesthesiology.

Dr. Ojeda is survived by his wife Darcy.



### **Banking Services for Educational and Healthcare Employees and Their Families!**

Our members provide high quality educational services and exceptional healthcare to our community. We help them keep more of their hard earned money! As a member of FASECU you can expect:

- No monthly account fees.
- Personalized service.
- Low fixed interest rate loans for any purpose.
- Refinance options for your current loans to lower your interest rate or payment, or to consolidate high interest rate debt.
- Access to a nationwide network of 30,000 surcharge free ATMs.
- Online banking and mobile banking (app for smartphone and tablet).

**Opening an account is easy!**

**Call a Member Services Representative at:**  
(800) 369-2786, (810) 720-8300 or (810) 664-5351

**Open your account online at:** [www.fasecu.org](http://www.fasecu.org)

**Visit one of our offices:**

**Main Office**  
4411 Calkins Rd.  
Flint, MI 48532

**Branch Office**  
5399 E. Court St. N.  
Burton, MI 48509

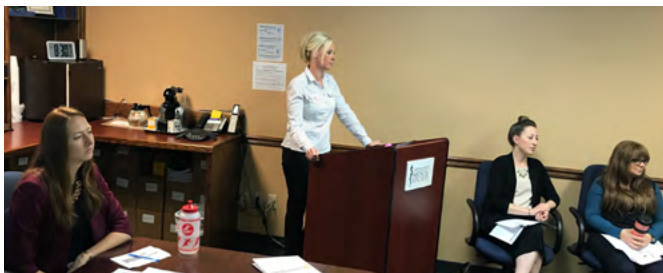
**Branch Office**  
1005 University Ave.  
Flint, MI 48504

**Branch Office**  
3400 Regency Park Dr.  
Grand Blanc, MI 48439

**Branch Office**  
168 N. Saginaw St.  
Lapeer, MI 48446



Federally Insured by  
NCUA



## Practice Managers Meet with Meridian Health Plan

The September practice managers meeting provided a presentation and discussion with Meridian Health Plan. Presenters included Jacqueline Kirejczyk, Director, Kristin Gaseski, Manager, and Erica D'Ambrosio, Representative for Genesee County. They covered the differences between the various lines of business, the use of the portal to identify list of codes requiring authorization broken down by lines of business, and the tool for all lines of business for all CPT codes requiring authorization. They reviewed the provider tools, the claim submission processes, methods to status and appeal claims. They also engaged in an extended question and answer period. These sessions are in valuable to the practice managers and to physician members.

The October 26 session provided a session on "Compliance Issues and Information" by Julie Hardy, MSA, RHIA, CCS, CCS-P, Lead Physician Services Consultant, Data Integrity & Compliance, The Rybar Group.

The January session topic will be "Physician & Staff Burnout", also presented by Ms. Julie Hardy. Please contact Sherry Smith by email or phone, if you would like your practice managers to attend the sessions.



Wachler & Associates represents healthcare providers, suppliers, and other individuals in Michigan and nationally in all areas of health care law, including:

- **Provider Contracting**
- **RAC, Medicare, Medicaid and Commercial Payor Audits**
- **Billing and Reimbursement**
- **Stark Law, Anti-Kickback Statute, and Fraud & Abuse Compliance**
- **Licensure, Staff Privilege and Credentialing**
- **Physician and Physician Group Issues**
- **Corporate and Transactional Matters**
- **Regulatory Compliance**
- **Healthcare Litigation**
- **Healthcare Investigations**
- **Fraud and False Claims Defense**
- **Provider Participation/Termination Matters**
- **HIPAA and HITECH Compliance**

**WACHLER**  
ASSOCIATES

SERVING HEALTHCARE PROVIDERS FOR OVER 30 YEARS

248.544.0888 • [wachler.com](http://wachler.com)

# Issues of Serious Concern for Medical Practices!

*Don't let your practice manager miss these important meetings!*



**Held 4th Thursday of each month from 8am to 10am.**

**The following topics are tentatively scheduled and subject to change**

**January 25th  
Presenter(s):**

## **“Physician & Staff Burnout”**

Julie Hardy, MSA, RHIA, CCS, CCS-P

Lead Physician Services Consultant, Data Integrity & Compliance  
The Rybar Group

**Genesee County Medical Society | Rapport Conference Room  
4438 Oak Bridge Drive, Suite B | Flint, MI 48532**

Keeping the **game fair...**



**...so you're not fair game.**

Your Michigan medicine  
is getting hit from all angles.

You need to stay focused and on point—  
confident in your coverage.

Get help protecting your practice,  
with resources that make important  
decisions easier.



**Healthcare Liability Insurance & Risk Resource Services**  
ProAssurance Group is rated **A+ (Superior)** by A.M. Best.

   **800.282.6242 • ProAssurance.com**

*Did you recognize...*  
**David Strahle, MD**



**GCMS MEETINGS**

— November 2017 —

**Community & Environmental  
 Health Committee, 11/1**  
 12:30pm, GCMS Office

**Legislative Liaison Committee**  
 Recessed

**2017 Ball Committee, TBD**

**MSF Fundraising Committee, TBD**  
 6:00pm, GCMS Office

**Practice Managers**  
 Recessed

**Finance Committee, 11/28**  
 5:15pm, GCMS Office

**Board of Directors, 11/28**  
 6:00pm, GCMS Office

**2017 GCMS/GCMSA President's Ball, 11/18**  
 6:00pm, Genesys Conference & Banquet Center

**HAPPY BIRTHDAY DOCTOR**

**NOVEMBER**

Gerald Berner, MD .....1  
 Michael Zarr, MD .....2  
 Pacita Tanhehco, MD .....2  
 Sania Zainuddin, MD .....3  
 Manmeet Dhillon, MD .....4  
 Punam Sharman, MD .....4  
 Jolanta Sobotka-Czarnecki, MD .....6  
 Badar Ahmed, MD .....9  
 Minoo Chinoy, MD .....9  
 Daniel Walter, MD .....9  
 James Culver, MD .....10  
 Elizabeth Hale, MD .....12  
 Barbara Mercer, MD .....14  
 Nikhil Vora, MD .....15  
 Phyllis Helcher, MD .....15  
 Gerald Natzke, Jr., DO .....16  
 Shady Megala, MD .....17  
 Mona Hardas, MD .....17  
 Manulal (Michael) Lala, MD .....17  
 Vishwas Vaniawala, MD .....18

Michael Macksood, DO .....19  
 Brenda Rogers-Grays, DO .....19  
 A. George Dass, MD .....19  
 Jamal Farhan, MD .....19  
 Dennis Pank, MD .....20  
 Alan Goldberg, MD .....22  
 Mark Trudell, MD .....22  
 J. Bernard Sloan, MD .....23  
 Aram Minasian, MD .....24  
 John McIllduff, MD .....24  
 Mostafa Abuzeid, MD .....25  
 Rachel Hulen, MD .....26  
 Daniel Anbe, MD .....26  
 Gurkan Ege, MD .....27  
 Stephen Wang, MD .....27  
 Robert Joynt, MD .....27  
 Ali Mohammed, MD .....28  
 Chintan Patel, MD .....29  
 K V Mathew, MD .....30

## YOUR \$\$\$ AT WORK

- GCMS expressed physician concerns regarding legislation which would create problematic requirements for physicians and their practices.
- GCMS expressed physician concerns regarding components of legislation designed to modify the auto no-fault system in Michigan.
- GCMS continued to express concerns regarding maintenance of certification and its impact on practice of medicine.
- GCMS continued its focus on working with insurance companies with a presence in Genesee County to improve interactions with medical practices.
- GCMS hosted a practice managers session on compliance issues.
- GCMS continues to seek funding for a study of chelation on low level chronic exposure to lead.
- GCMS continues to work with other organizations to promote a more harmonious way to creating positive change in this community.

*We place your interests first and strive for your success and satisfaction above all.*

*Trust us to provide payment solutions to your payment challenges.*

810.750.6822  
mktg@TheRybarGroup.com  
www.TheRybarGroup.com

THE  
**RYBAR**  
GROUP

HEALTHCARE FINANCIAL CONSULTANTS





2017 GCMS/GCMSA President's Ball

*"An Enchanted Garden"*

*In honor of Dr. John Hebert, III*

Saturday, November 18, 2017, 6:00pm

Genesys Conference & Banquet Center

801 Health Park Boulevard, Grand Blanc, MI 48439

All ages welcome!

*RSVP by November 9, 2017*

at [ssmith@gcms.org](mailto:ssmith@gcms.org) or 810-733-9923

Ticket Prices:

Ages 13 & up, \$85

Ages 3-12, \$35

Ages 2 & under, free

---

Multiple levels of sponsorship are also available

---

**Valet Parking Available**

**Black Tie Optional - Relaxed Business Attire Welcomed**

Join  
GCMS/MSMS