



THE Bulletin

April 2019 Volume 96, Number 4

PowerPoint Presentations from 2/7 Town Hall on How to Stay Out of Trouble with the New Opiate Laws Appear at End of Issue

GCMS and MSMS meet with New Legislators

Legal Advisor – What Happens If You Do Not Have an Estate Plan

GENESEE COUNTY MEDICAL SOCIETY

Organized Medicine's Leading Edge



Your one stop shop for all her breast health needs.

Everything your patient needs for optimal breast screening in one convenient package – 3D UltimateMamm®.

3D Mammography

Provides a better look at breast tissue by creating a circular image which can be viewed from many angles.

Breast Density

We measure the thickness of breast tissue so we can recommend the best screenings for every patient.

Risk Scoring

We ask questions to gauge the patient's overall predisposition for breast cancer using the Gail risk scoring system.

Lennon Rd, Flint | Villa Linde, Flint | Davison | Fenton | Grand Blanc
Lapeer | Novi | Royal Oak | Southgate



Genesee Area (810) 732-1919
Lapeer Area (810) 969-4700
Novi Area (248) 536-0410
Royal Oak Area (248) 543-7226
Southgate Area (734) 281-6600

THE BULLETIN is published monthly by
The Genesee County Medical Society.

ASSOCIATE EDITOR
Peter S. Thoms, MD

GCMS OFFICERS 2018-19
Ed Christy, MD
President

Asif Ishaque, MD
President Elect

Gerald Natzke, Jr, DO
Immed. Past Pres.

Qazi Azher, MD
Secretary

Ethiraj Raj, MD
Treasurer

MSMS OFFICERS 2018-19
S. Bobby Mukkamala, MD
Chair

John Waters, MD
Treasurer

DISTRICT DIRECTOR VI
S. Bobby Mukkamala, MD

DELEGATES

Qazi Azher, MD
Cathy Blight, MD
Laura Carravallah, MD
Ed Christy, MD
Pino Colone, MD
Niketa Dani, MD
Deborah Duncan, MD
Hesham Gayar, MD
John Hebert, III, MD
Rima Jibaly, MD
Nita Kulkarni, MD
Gerald Natzke, DO
Tarik Wasfie, MD

ALTERNATE DELEGATES

Khalid Ahmed, MD
Sherry Cavanagh, MD
Kiran Devisetty, MD
Asif Ishaque, MD
Sunil Kaushal, MD
Farhan Khan, MD
Sayed Osama, MD
Rama Rao, MD
Venkat Rao, MD
Lawrence Reynolds, MD
Brenda Rogers-Grays, MD
Robert Soderstrom, MD
Amanda Winston, MD

OTHER BOARD MEMBERS

Gary Johnson, MD
EXECUTIVE DIRECTOR
Peter A. Levine, MPH
EXECUTIVE ASSISTANT
Sherry Smith

This publication
designed and
edited by



www.natanskypublishing.com (248) 547-9749

April 2019 Volume 96, Number 4

THE Bulletin

Read by 96% of GCMS members.

FEATURE ARTICLES

Legal Advisor: What Happens If You Do Not Have an Estate Plan	8
New Lawmakers Reception	10
GCMS Meets with Legislators	12
Practice Managers Meeting: Social Determinants of Health	16
Social Determinants of Health Transportation List	18
How to Stay Out of Trouble with the New Opiate Laws <i>José T. Brown, Esq.</i>	30
MSMS Prescribing & Dispensing Resources <i>Stacey P. Hettiger, MSMS Dir. of Medical & Regulatory Policy</i>	36

REGULARS

President's Message	4
Your \$\$ at Work	4
GCMS Meetings	5
Director's Message	6
Happy Birthday Doctor	6

Cover Photo: Cyrus Farrehi, MD

Our Vision

That the Genesee County Medical Society maintain its position as the premier medical society by advocating on behalf of its physician members and patients.

Our Mission

The mission of the Genesee County Medical Society is leadership, advocacy, education, and service on behalf of its members and their patients.

PLEASE NOTE

The GCMS Nominating Committee seeks input from members for nominations for the GCMS Presidential Citation for Lifetime Community Service. The Committee would like to be made aware of candidates for consideration.

THE BULLETIN

Published by the Genesee County Medical Society Publication Office
4438 Oak Bridge Drive, Suite B, Flint, Michigan 48532
Phone (810) 733-9923 Fax (810) 230-3737

By subscription \$60 per year. Member subscription included with Society dues. Contributions to

THE BULLETIN are always welcome. Forward news extracts or material of interest to the staff before the 5th of the month. All statements or comments in *THE BULLETIN* are the statements or opinions of the writers and are not necessarily the opinion of the Genesee County Medical Society.

Health Can't Wait

We are physicians. Our job is to do the best job we can for our patients. We advocate for them in many settings, but it is impossible to do this well and safely in an environment where prior authorization is so ubiquitous. The amount of work that it takes in practices, hospitals, nursing homes, or surgery centers, is astronomical and unforgivable. All of us see the daily impact of waiting to hear back from insurance companies for days and days after sending in the information for prior authorization of a procedure or a medication that is clearly necessary. Sadly, patients do not understand the process, and as the insurance company slows things down, patients face impediments to their care that they attribute to their physician instead of the insurance company.



Edward Christy, MD

To begin to address this problem, the Michigan State Medical Society, along with patient advocacy groups, is developing a coordinated effort called Health Can't Wait, to drive back the onslaught of prior authorization. They will do this by showing examples of the deleterious effect of prior authorizations on patients. Insurers have come up with all sorts of impediments to timely care. The concept of "fail first," or "step therapy"

is usually unnecessary because anyone with any knowledge would know that the prescribed therapy is going to be more effective than the one that is required to fail first. These prior authorizations are usually for more expensive therapies or interventions. But even inexpensive treatments and drugs sometimes get caught up in the prior authorization maze because pharmacy managers are cutting deals with drug companies.

It is painful to watch patients decline as they progress through the failures of therapies that a doctor knows will fail before the insurance

company will approve the appropriate measure. There is plenty of research to back the fact that this process is negative from a patient perspective. The cost alone of the work required to get these prioritization's through is staggering. Estimates are that it's costing \$31 billion to the nation's physician community. That is a lot of money that could be used to treat patients.

Keep your eyes open. You'll be hearing from the Michigan State Medical Society and the Genesee County Medical Society on new updates related to the Health Can't Wait movement.

YOUR \$\$\$ AT WORK

- GCMS and MSMS hosted a New Legislator's Reception at GCMS offices
- GCMS and MSMS met with the legislative delegation to discuss prior authorization, maintenance of certification, the state budget, and other issues
- GCMS held practice managers session on Social Determinants of Health
- GCMS convened two meetings between practices and insurance companies to sort problems out
- GCMS planned the next seven meetings for practice managers to introduce them to insurance company decision makers and to think through strategies on how to accomplish prior authorizations

GCMS MEETINGS

APRIL 2019

Legislative Liaison Committee, 4/1
8:00am, GCMS Office

Practice Managers, 4/4
8:00am, GCMS Office

Community & Environmental Health Committee, 4/17
12:30pm, GCMS Office

Finance Committee, 4/23
5:15pm, GCMS Office

Board of Directors, 4/23
6:00pm, GCMS Office

Announcement

GCMS members now entitled to a 15% discount on automobile and homeowners insurance.

For details, contact:

POTTER & ROOSE
INSURANCE

810-767-8590

Providers of insurance for the GCMS & its members for 50 years.

906 Mott Foundation Bld., Flint MI 48502

Sovita
CREDIT UNION

The world needs more people who are committed enough to say YES.

Yes believes in possibility. Yes gives people a chance. Yes can turn thoughts and plans into life-changing actions. Sovita Credit Union serves Education and Healthcare Workers, their Families and their Communities.

Join today. sovitacu.org



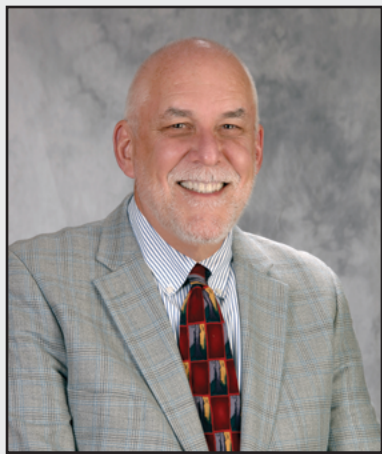
Town Hall on Social Determinants of Health Opioid Town Hall PowerPoints

The February Town Hall on, How to Stay Out of Trouble with the New Opioid Laws, was a highly effective session. The information contained in those presentations are of real import to medical practices.

We have decided to publish all three PowerPoint presentations that were used during the program. This issue of The Bulletin will contain two of the PowerPoints in their entirety. The presentations by Jose Brown of Cline, Cline, and Griffin (the law firm which represents the Genesee County Medical Society) and Stacey Hettiger, who is the key regulatory expert at the Michigan State Medical Society, are presented in this issue of The Bulletin. The joint presentation by Attorneys Patrick Haddad and Kathleen Westfall will be presented in its entirety In the May issue of The Bulletin. These PowerPoints are full of information and contain live links to more information.

This issue also contains article by Jose` Brown entitled "Opiate Checklist for LARA Investigations"

It should prove to be a very beneficial document to keep on hand, in case it is needed.



Peter Levine, MPH

The May Town Hall will focus on Social Determinants of Health. Everyone probably knows that approximately 80% of health is determined by non-medical care issues. It is the patients' environment, their social-support system, their socioeconomic status, their employment status, availability of clean water and fresh food, transportation, and so many other factors, that determines their level of health, and their ability to achieve positive health outcomes from medical care.

Outcomes will play a big part in how our physicians are paid in the future, and this community is on the forefront of experimenting with the incorporation of Social Determinants of Health into medical care. Come and hear about what to look for, what to do about it, how to intervene, how to communicate effectively, and how to improve the outcomes of your medical intervention. This meeting will take place 6 p.m. May 2 at the Flint Golf Club. Please mark out the time and make a reservation.

incorporation of Social Determinants of Health into medical care. Come and hear about what to look for, what to do about it, how to intervene, how to communicate effectively, and how to improve the outcomes of your medical intervention. This meeting will take place 6 p.m. May 2 at the Flint Golf Club. Please mark out the time and make a reservation.

HAPPY BIRTHDAY DOCTOR

APRIL

Wayne Breece, MD	2	Don Rubino, MD	15
Kenneth Jordan, MD.....	3	Peter Thoms, MD.....	15
Qazi Azher, MD	6	Ehab Youssef, MD	17
Carlo Dall'Olmo, MD.....	6	Abdullah Raffee, MD	19
Kurt Mikat, MD	7	Sarah Sanchez, MD	19
John Bauer, MD	9	Gregory Forstall, MD	21
Sherry Cavanagh, MD.....	9	Alan Weamer, MD	22
Syed Sattar, MD	10	Thomas Bossi, DO	23
Dilraj Ghumman, MD	11	Byron Schoolfield, MD	24
Muhammad Jabbar, MD	11	Rima Jibaly, MD	26
Candacy George, DO.....	12	Nita Kulkarni, MD	26
Elisea Singson, MD.....	12	James Martin, MD	26
Huda Elhwairis, MD.....	13	Hesham Gayar, MD	28
W Archibald Piper, MD	13	Mark Camens, MD	29
Fook Kuet, MD.....	15	Mark Mattos, MD.....	30

Save the Date!

"The End of Caregiving isn't Freedom....It's Grief"

2019 Hospice Teleconference

"Aging America: Coping with Loss, Dying, and Death in Later Life"



When: Wednesday May 15, 2019

Time: 8:00 a.m. Registration

8:30 a.m.-12:00p.m. Program

****Full breakfast to be provided****

Where: Genesys Conference & Banquet Center

Grand Blanc, MI

FREE TO ATTEND

To RSVP call McLaren Hospice at 810-496-8625

CEU's available

Funded by a grant from The Community Hospice Foundation Fund of The Community Foundation of Greater Flint in cooperation with Heartland Hospice, Kindred Hospice, McLaren Hospice, Reverence Hospice, Brown Funeral Home, Hill Funeral Home and Reigle Funeral Home.

What Happens If You Do Not Have an Estate Plan

By Timothy H. Knecht, Esq.
Cline, Cline & Griffin, P.C.

At some point in time, it becomes important for everyone to have an estate plan. That time is before you really need one. If, however, you do not have a Will or a Trust or any other kind of estate plan, here is what happens upon your death.

- Any bank accounts or property in joint name goes to the joint owner
- Any account where a beneficiary is named goes to the named beneficiary. Note: if a beneficiary is under the age of 18, the Court may get involved and the child may get all of the proceeds upon turning 18, sometimes a scary thought.

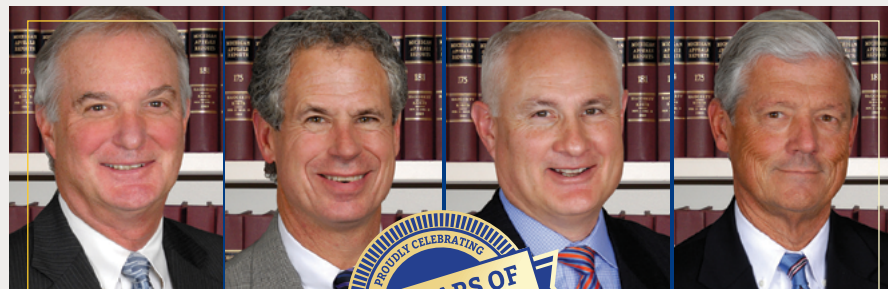
For anything in your name alone, the Probate Court gets involved and appoints someone to be in charge, the Personal Representative. Then, the State of Michigan has determined that for all property just in your name alone, not jointly and with no beneficiary, such property is distributed as follows:

- If you are married, regardless of whether you are separated or in the process of divorce so long as you are married, everything goes to your surviving spouse if you have no children or parents surviving.
- If you are married, regardless of whether you are separated or in the process of divorce so long as you are married, and have no children but do have a surviving parent, your surviving spouse gets the first \$235,000 plus three-quarters of the rest of everything else. The remaining one-quarter goes to the surviving parent or parents.
- If you are married, regardless of whether you are separated or in the process of divorce so long as you are married, and have children, the surviving spouse receives the first \$235,000 then half the balance of everything else. Your children, whether they are children of your surviving spouse or not, divide the remaining one-half equally

amongst themselves unless none of your children are children of your surviving spouse. In that case, your surviving spouse receives the first \$157,000 plus half the balance of everything else and your children split the other half equally amongst themselves.

- If you leave no surviving spouse and no children, your parents receive everything equally. If you leave only one parent, the surviving parent gets everything.
- If you leave no surviving spouse, children or parents, your estate is divided amongst your parents' descendants, perhaps your aunts, uncles and cousins.
- If you leave no surviving spouse, children, parents or descendants of parents, your estate is divided according to your grandparents' bloodlines.

CONTINUED ON PAGE 9



TRUST EXPERIENCE. COUNT ON COMMITMENT.

In the Fall of 1928, Howard D. Cline and Francis J. George, both recent graduates of law school, formed a partnership Cline & George and secured a small office on the 10th floor of the Mott Foundation Building. That partnership remained until the mid-fifties when Earl J. Cline, son of Howard D. Cline, joined the firm which became Cline & Cline. In the early sixties, Howard D. Cline, Jr. joined the law firm. Howard Cline, Sr. died in 1965. Walter P. Griffin joined in the mid-seventies and in the late seventies the present law firm of Cline, Cline & Griffin, P.C. was formed. That entity expanded with the acquisition of the entire 10th floor of the Mott Foundation Building. Since that time, Timothy H. Knecht, José T. Brown, and J. Brian MacDonald have become shareholders. Currently, Cline, Cline & Griffin, P.C. has twenty employees, including eight attorneys. We look forward to the next 90 years.

CC&G
CLINE, CLINE & GRIFFIN
A PROFESSIONAL CORPORATION

Attorneys at Law | Since 1928 | www.ccglawyers.com | 810.232.3141



FOR LEASE

Linden Rd. visibility in versatile suite with 8 - 9 offices plus waiting and storage. 2,879 SF can be expanded by up to ±1,500 SF. Two private offices with large bay windows, lots of windows that open throughout. Well lit, ample parking in professional office park. Convenient location to expressways and the Linden, Miller and Corunna Rd. corridors.



Karen Cape

Cooper Commercial
810-423-3775 [M]
810-732-6000 [O]
karen@coopercom.com

Estate Plan

CONTINUED FROM PAGE 8

- In addition to the amounts passing to a surviving spouse or your children, Michigan Law provides for what is called a Family Allowance, a Homestead Allowance and an Exempt Property Allowance. A Family Allowance is currently \$28,000. A Homestead Allowance is \$23,000. An Exempt Property Allowance is \$16,000. These allowances can be paid before any of the distributions outlined above.
- Probate is not the end of the world, but it can be cumbersome and, as you can see from the above, without an estate plan, or at least a Will, it is unlikely your assets are going to be distributed in the way you would choose.

You can solve all of these problems by simply taking a few hours, meeting with the attorney of your choice and getting your estate plan set up. As always, if you have questions, please feel free to contact me at tknecht@ccglawyers.com.

We place your interests first and strive for your success and satisfaction above all.

Trust us to provide payment solutions to your payment challenges.

810.750.6822
mktg@TheRybarGroup.com
www.TheRybarGroup.com



HEALTHCARE FINANCIAL CONSULTANTS

New Lawmakers Reception

GCMS and MSMS held a New Lawmakers Reception Feb. 25 at the GCMS offices and provided a great opportunity for physicians and staff to meet with new and existing legislators from Genesee County. Reps. Sheryl Kennedy, John Cherry, and Tim Sneller attended. Chris Flores, regional director for U.S. Rep. Dan Kildee attended as well. Josh Richmond, who directs the Michigan State Medical Society Political Action Committee, also attended. Engaging discussions were held, and introductions were made.



The Genesee County Medical Society cordially invites you to a Quarterly Dinner Business Meeting

Sponsored by **Sovita** CREDIT UNION and the MSU **FLINTREGISTRY** Get Connected. Get Supported. Get Counted.

Medical Community Town Hall

May 2, 2019

SOCIAL DETERMINANTS OF HEALTH WHAT IT MEANS TO YOU AND YOUR PRACTICE

Approximately 80% of health is determined by non-medical issues. Those issues are called Social Determinants of Health. SDOH impacts your patient's ability to achieve positive health outcomes from your medical care interventions.

Outcomes will play a large part in how physicians are paid in the future. This community is on the forefront of determining the best way to incorporate handling of SDOH into medical care and the practice of medicine. Come hear what to look for, what to do about it, how to intervene, how to communicate effectively, and how to improve outcomes of your medical interventions. You will also be brought up-to-date on what's going on locally to enhance the incorporation of SDOH into actual practice.

Traci Kim, MA, CMPE, Lecturer, Public Health and Health Sciences, University of Michigan - Flint, and Administrator of Complete Eye Care, what Social Determinants of Health means to your practice.
M. Susan Schneberger, LMSW, ACSW, JD, Senior Project Director, Genesee Children's Healthcare Access Program, speaking on the State Innovation Model, a detailed look at the data and the correction of negative curves.
Stacie Saylor, Michigan State Medical Society Reimbursement Ombudsperson.

Presenters:



Stacie Saylor



Traci Kim, MA, CMPE



Susan Schneberger, LMSW

Meeting Location:

Flint Golf Club
3100 Lakewood Drive
Flint, MI 48507

Evening Schedule:

6 pm, Registration & Social Hour
6:30 pm, Dinner
7 pm, Meeting
7:15 pm, Presentations

Please mail your reservation payment to:
Genesee County Medical Society
4438 Oak Bridge Drive, Suite B
Flint, MI 48532

Space is limited!

Please register by April 25, 2019

Please invite other physicians and practice managers to this meeting!
GCMS physicians, spouses, GCMSA, family members, practice staff
and other interested professionals are encouraged to attend!

- \$40.00 – GCMS Members, Spouses, Practice Managers, & Staff
- \$40.00 – Staff & Special Guests of Greater Flint Health Coalition
- \$25.00 – Resident Physicians & Medical Students
- \$75.00 – Non-Member Physicians, Spouses, Practice Managers, & Staff

Email Sherry at ssmith@gcms.org to register your attendance or call 810-733-9923 for more information.



GCMS Meets with Legislators

New state Reps. Sheryl Kennedy and John Cherry attended the March 4 Legislative Liaison Committee meeting, at which Christin Nohner from MSMS presented. Others in attendance included Drs. Sherry Cavanaugh, Cathy Blight, John Waters, Paul Lazar, Deborah Duncan, Practice manager Gary Paavola, and Medical Society staff Peter Levine.

Prior authorization legislation and the Health Can't Wait campaign were the topics of the day. Health Can't Wait is a coalition of patient advocacy and physician organizations working together to raise awareness of problems with the unabated prior authorization situation, a problem that affects patient care. Legislators are attending educational meetings on the prior authorization issue. MSMS is working on development of a bill and securing sponsors. The Committee discussed prior authorization problems. Ms. Nohner indicated that MSMS is trying to create legislation that would ask that prior authorization be evidence-based. She also discussed step therapy and its qualitative deficiencies.

The Committee also discussed the status of auto no-fault reform legislation. The Senate Insurance Committee is holding hearings to educate senators on the issue. It is not clear what the Committee will propose. It is anticipated that the House of Representatives will take more time than the Senate to deliberate on the issue. The House has a special committee on auto no-fault reform. The goal of the Legislature is to get something introduced by summer.

A bill has been introduced that would require e-prescribing for all controlled substances. MSMS has concerns about the impact on small and rural practices. The Committee thought that the Legislature has progressively passed legislation relating to controlled substances that do not work, resulting in even more legislation, with more problems.

Dr. Blight noted that the governor's budget presentation took place March 5. She invited everyone back for a meeting on April 1, to discuss it.



ATTENTION: GCMS Practice Managers

Issues of Serious Concern for Medical Practices!

Don't let your practice manager miss these important meetings!

CMS Practice Manager meetings are held on the 1st Thursday of each month from 8am to 10am

The following topics are tentatively scheduled and subject to change

<p>April 4, 2019 Presenter(s)</p>	<p style="text-align: center;">“Blue Cross Blue Shield of Michigan Update” Donna LaGosh, Manager PGIP Field Team at Blue Cross Blue Shield of Michigan</p>
<p>May 9, 2019 Presenter(s)</p>	<p style="text-align: center;">“Meridian Health Plan” (second Thursday) Amanda Herr, Network Development Representative Kristen Gasieski, Manager Network Development</p>
<p>June 6, 2019 Presenter(s)</p>	<p style="text-align: center;">“Health Alliance Plan” Deborah Spencer, Assistant Vice President, Provider Services</p>
<p>July 4, 2019</p>	<p style="text-align: center;">No Meeting - Enjoy Your Holiday and Happy Summer!</p>
<p>August 1, 2019 Presenter(s)</p>	<p style="text-align: center;">“Prior Authorization - What is Working, What is Not” Stacie Saylor, CPC, CPB Manager, Reimbursement Advocacy, Michigan State Medical Society</p>
<p>September 5, 2019 Presenter(s)</p>	<p style="text-align: center;">“McLaren Health Plan” Amy Weigandt, Network Development Coordinator Candy Gilbert, Network Development Supervisor</p>
<p>October 3, 2019 Presenter(s)</p>	<p style="text-align: center;">“What's New with MIPS” TBD</p>

Please email Sherry at ssmith@gcms.org or call 810-733-9923 to RSVP!

**Genesee County Medical Society - The Rapport Conference Room
4438 Oak Bridge Drive, Suite B, Flint, MI 48532.**



THE ASAM

Treatment of Opioid Use Disorder Course

Includes Waiver Qualifying Requirements

April 27, 2019 | 9:00 am – 1:30 pm

IN-PERSON LOCATION

Central Michigan University
College of Medicine Educational
Building
1632 Stone Street, Room 1008
Saginaw, MI 48602

LIVE STREAM LOCATION

Central Michigan College of
Medicine
1280 East Campus Drive, Room
2403
Mount Pleasant, MI 48859

COST: Free

REGISTRATION

https://elearning.asam.org/p/CMU_Apr27

CONTACT

Alyson Hill
Email: hill1am@cmich.edu

The ASAM Treatment of Opioid Use Disorder Course covers all evidence-based practices and medications for treating patients with opioid use disorder.

The ASAM Treatment of Opioid Use Disorder Course is designed for:

- Physicians, nurse practitioners, physician assistants, and healthcare team members working with patients with opioid use disorder.
- Physicians, nurse practitioners, and physician assistants who wish to obtain a waiver to prescribe buprenorphine in office-based treatment of opioid use disorder.

Course Format:

- Blended – four hours online, four hours live
 - Four hours of self-paced online learning to be completed by **Friday, April 26, 2019**
 - Four hours of live learning on Saturday, April 27, 2019 in Saginaw, MI or via live stream in Mount Pleasant, MI

[Register](#)

Course faculty are expecting learners to complete the first portion of the course before attending the live portion. This 4 hour online/4 hour live blended training satisfies eight hours of education requirements for providers to qualify for a DEA DATA2000 waiver. NPs and PAs can qualify after completing an additional 16 hours provided by ASAM.



ASAM is an approved provider by CSAT/SAMHSA of DATA 2000 training.

ACCME ACCREDITATION STATEMENT: The American Society of Addiction Medicine (ASAM) is accredited by the Accreditation Council for Continuing Medical Education (ACCME) to provide continuing medical education for physicians.

AMA CREDIT DESIGNATION STATEMENT: The American Society of Addiction Medicine designates this enduring material for a maximum of **4 AMA PRA Category 1 Credits™**. Physicians should claim only the credit commensurate with the extent of their participation in the activity.

The American Society of Addiction Medicine designates this live activity for a maximum of **4 AMA PRA Category 1 Credits™**. Physicians should claim only the credit commensurate with the extent of their participation in the activity.

[Feedback](#)

Register for the free American Society of Addiction Medicine (ASAM) Medication-Assisted Treatment (MAT) waiver course and earn CME credits!

Blended course:

https://elearning.asam.org/p/CMU_Apr27

Full 8-hour online course:

<https://elearning.asam.org/products/the-asam-treatment-of-opioid-use-disorder-course-8-hour-online-pcss-universities>

Registration link for the additional 16 hours for NPs/PAs
<https://elearning.asam.org/p/ASAMTOUDPCSSUniversities16>

Social Determinants of Health

The March 7th practice managers meeting focused on the Social Determinants of Health (SDOH) with an illuminating presentation by Traci Kim, MA, CMPE, Lecturer in Public Health & Health Sciences, University of Michigan Flint and Administrator of Complete Eye Care.

The main foci of her presentation included: How Do You Notice That the Patient Needs Help? Cultural Competence, Health Literacy, What Can Practices Do? It also featured a round-robin discussion of what practices are doing to implement SDOH processes.

Ms. Kim especially spoke of what can be done as individual employees of practices to focus on social determinants that create barriers that patients experience from a social perspective. These impediments may be able to be overcome. In addition, barriers the providers face must be overcome while trying to address social determinants of health.

Ms. Kim describes Social Determinants of Health as the conditions in places where people live, learn, work, and play which affect the wide range of health risks and outcomes. Examples of this include education, food and water, neighborhoods, healthcare, economic stability, and social support.

Another key concept that Ms. Kim focused on, was that of health disparities. Health disparities are preventable differences in the burden of disease, injury, violence, or an opportunity to achieve optimal health experience by socially disadvantaged, racial, ethnic, and other population groups, and communities.

Ms. Kim provided many examples of Genesee County statistics relating to health disparities. This included population-based data showing premature death in years of life lost, by race, for the county, as compared to Michigan and the United States. The variations were extreme.

She explained the importance of cultural competence, which is the ability to provide care for patients with diverse values, beliefs, and behaviors, including tailoring care to meet patients social, cultural, and linguistic needs.

The concept of social location is also of importance. This is the groups people belong to because of their place or position in history and society. All people have a social location that is defined by their gender, race, social class, age, ability, religion, sexual orientation, and geographic location. It is the lens through which we see the world.

Another critical issue for practices is to be aware

of is the health literacy of the patient. Health literacy is the ability to read, understand, and use health information to make appropriate healthcare decisions and follow instructions for treatment. She provided concrete examples of how to address this and noted that it is the strongest predictor in a person's health status.

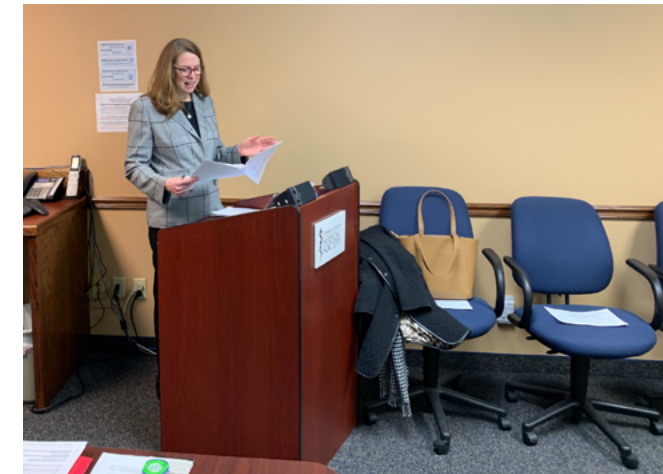
Some key statistics that she provided were that, in Genesee County, 21% of adults read at the first-grade level. It is estimated that poor health literacy costs the



United States between \$106 and \$238 billion per year. She noted that it is virtually impossible to provide materials for patients at the first-grade level. Her advice was to target sixth-grade as the reading level for patient education materials.

Ms. Kim reviewed several case studies to illustrate how her practice has handled individual patients who had significant social barriers to overcome in order to have a positive medical outcome. Ms. Kim also provided a list of transportation programs that patients and practices can access to help make it possible for patients to get to and from appointments. That list is available on page 18. The practice managers stayed late and provided her with an ovation.

The practice managers requested that the open topics in June and August be allocated to Health Alliance Plan, and a round-robin on Prior Authorization - What is Working, What is Not. This session will provide a unique opportunity for practice managers to engage in active comparative discussion regarding the issue of prior authorization. In October, the topic will be What's New with MIPS.



Your HEALTH CARE LAW FIRM



Wachler & Associates represents healthcare providers, suppliers, and other individuals in Michigan and nationally in all areas of health care law, including:

- **Provider Contracting**
- **RAC, Medicare, Medicaid and Commercial Payor Audits**
- **Billing and Reimbursement**
- **Stark Law, Anti-Kickback Statute, and Fraud & Abuse Compliance**
- **Licensure, Staff Privilege and Credentialing**
- **Physician and Physician Group Issues**
- **Corporate and Transactional Matters**
- **Regulatory Compliance**
- **Healthcare Litigation**
- **Healthcare Investigations**
- **Fraud and False Claims Defense**
- **Provider Participation/Termination Matters**
- **HIPAA and HITECH Compliance**

WACHLER
ASSOCIATES

SERVING HEALTHCARE PROVIDERS FOR OVER 30 YEARS

248.544.0888 • wachler.com

Social Determinants of Health Transportation List

Transportation Services

Below are a list of insurances and their phone numbers.
You are required to call AT LEAST 3-5 days BEFORE your scheduled appointment.

Insurance Carrier	Free Transportation	Customer Service
Blue Cross Complete	888-803-8554	800-228-8554
McLaren Health Plan	888-327-0671	888-327-0671
Meridian Health Plan	888-437-0606	888-437-0606
Molina Health Care	866-712-1063	888-898-7969
United Health Care	877-892-3995	800-903-5253

Additional Options

*If you do not have insurance which provides transportation, such as straight Medicaid or Medicare, below is the number for a local organization in Flint, MI. They will assist you to the best of their ability.

<u>Jewish Community Services</u>	<u>In County Appointments</u>	<u>Out of County Appointments</u>
810-767-5922 www.jcsflint.org	Fee \$4.00	Fee based on income

*also for patients who have Medicare, BCBS

Service Provider	Customer Service
MTA – General www.MTAFlint.org	810-767-0100
MTA – Americans with Disabilities (ADA) Application Process	810-767-6950
Your Ride – Serving Persons with Disabilities & Senior Citizens www.MTAFlint.org/YourRide	Burton: 810-767-5992 Clio: 810-780-8920 Davison: 810-780-8910 Fenton: 810-780-8965 Flint East: 810-767-5541 Flint West: 810-233-4751 Flushing: 810-780-8930 Grand Blanc: 810-780-8960 Mount Morris: 810-780-8970 Otisville: 810-780-8940 Swartz Creek: 810-780-8950

The Genesee County Medical Society cordially invites you to a Quarterly Dinner Business Meeting

Sponsored by



and the MSU



Medical Community Town Hall

May 2, 2019

SOCIAL DETERMINANTS OF HEALTH WHAT IT MEANS TO YOU AND YOUR PRACTICE

Approximately 80% of health is determined by non-medical issues. Those issues are called Social Determinants of Health. SDOH impacts your patient's ability to achieve positive health outcomes from your medical care interventions.

Outcomes will play a large part in how physicians are paid in the future. This community is on the forefront of determining the best way to incorporate handling of SDOH into medical care and the practice of medicine. Come hear what to look for, what to do about it, how to intervene, how to communicate effectively, and how to improve outcomes of your medical interventions. You will also be brought up-to-date on what's going on locally to enhance the incorporation of SDOH into actual practice.

Traci Kim, MA, CMPE, Lecturer, Public Health and Health Sciences, University of Michigan - Flint, and Administrator of Complete Eye Care, what Social Determinants of Health means to your practice.
M. Susan Schneberger, LMSW, ACSW, JD, Senior Project Director, Genesee Children's Healthcare Access Program, speaking on the State Innovation Model, a detailed look at the data and the correction of negative curves.
Stacie Saylor, Michigan State Medical Society Reimbursement Ombudsperson.

Presenters:



Stacie Saylor



Traci Kim, MA, CMPE



Susan Schneberger, LMSW

Meeting Location:

Flint Golf Club
3100 Lakewood Drive
Flint, MI 48507

Evening Schedule:

6 pm, Registration & Social Hour
6:30 pm, Dinner
7 pm, Meeting
7:15 pm, Presentations

Please mail your reservation payment to:
Genesee County Medical Society
4438 Oak Bridge Drive, Suite B
Flint, MI 48532

Space is limited!

Please register by April 25, 2019

Please invite other physicians and practice managers to this meeting!
GCMS physicians, spouses, GCMSA, family members, practice staff
and other interested professionals are encouraged to attend!

\$40.00 – GCMS Members, Spouses, Practice Managers, & Staff
\$40.00 – Staff & Special Guests of Greater Flint Health Coalition
\$25.00 – Resident Physicians & Medical Students
\$75.00 – Non-Member Physicians, Spouses, Practice Managers, & Staff

Email Sherry at ssmith@gcms.org to register your attendance or call 810-733-9923 for more information.



4438 Oak Bridge Drive Ste A 15726LG

4438 Oak Bridge Dr, Flint, MI 48532



Listing ID: 30337937
Status: Active
Property Type: Office For Lease
Office Type: Business Park
Contiguous Space: 2,879 SF
Total Available: 2,879 SF
Lease Rate: \$12 PSF (Annual)
Base Monthly Rent: \$2,879
Lease Type: NNN
Nearest MSA: Flint
County: Genesee
Tax ID/APN: 07-21-651-009
Zoning: GENERAL COMMERCIAL
Gross Building Area: 9,990 SF
Year Built: 1994



More Information Online

<http://coopercom.catylist.com/listing/30337937>

QR Code

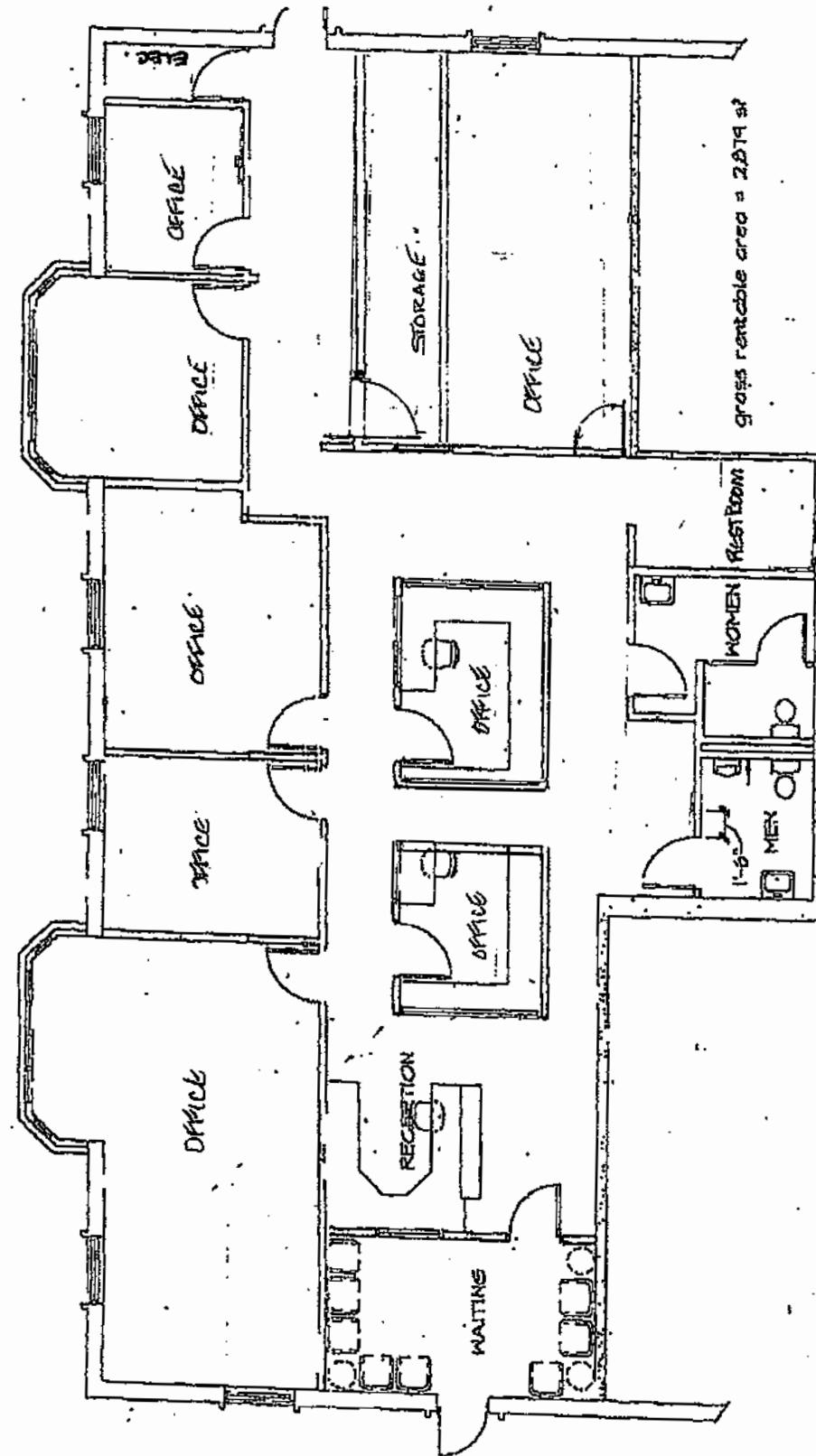
Scan this image with your mobile device:



Overview/Comments

Linden Rd. visibility in versatile suite with 8 - 9 offices plus waiting and storage. 2,879 SF can be expanded by up to ±1,500 SF. Two private offices with large bay windows, lots of windows that open throughout. Well lit, ample parking in professional office park. Convenient location to expressways and the Linden, Miller and Corunna Rd. corridors.

N.T.S.



NEW WORK PLAN
SCALE: 1/8" = 1'-0"
FIG. 5, 5200

Property Contacts



Karen Cape

Cooper Commercial
810-423-3775 [M]
810-732-6000 [O]
karen@coopercom.com

FOR LEASE

APRIL 2019 Fitness Calendar

FREE! Commit to Fit! Class Schedule



Commit to Fit! offers fitness classes at **no cost** to all individuals who live or work in Flint and Genesee County. Fitness Centers require participants to be age 18 and older, other locations are open to all ages. See back side for details.

	MONDAY	TUESDAY	WEDNESDAY	THURSDAY	FRIDAY	SAT
APRIL 2019	1 Water Aerobics IHFC 9:00am Enhance Fitness Hasselbring Senior Center 9:00am Senior Stretch YMCA Downtown 10:00am Pound GAC 10:15am Arthritis Foundation Exercise Program Loose Senior Center 2:00-3:00pm Aqua Fitness U of M-Flint Rec 5:30-6:30 pm Water Aerobics IHFC 6:00pm	2 Enhance Fitness Berston Field House 10:00 a.m. Arthritis Foundation Exercise Program Grand Blanc Senior Center 10:00-11:00am Total Body Challenge 10:00-11:00am Brennan Senior Center Splash Bash U of M-Flint Rec 11:00 am Enhance Fitness Hamilton Health Clinic 12:00 pm Chair Aerobics Brennan Senior Center 12:30-1:15pm Hustle Aerobics Brownell STEM 4:30-5:30	3 Enhance Fitness Hasselbring Senior Center 9:00 a.m. Arthritis Foundation Exercise Program Davison Area Senior Center 10:00-11:00am Arthritis Foundation Exercise Program Forest Township Senior Center 12:15-1:00pm Enhance Fitness Hamilton Main Clinic 5:30 pm Community Yoga Brownell Elementary 4:30-5:30pm Community Yoga Crim Fitness Foundation 5:15-6:15pm Zumba GAC 6:45 p.m	4 Enhance Fitness Berston Field House 10:00 a.m. Arthritis Foundation Exercise Program Grand Blanc Senior Center 10-11:00am Total Body Challenge 10:00-11:00am Brennan Senior Center Chair Aerobics Brennan Senior Center 12:30-1:15pm Basic Yoga Insight Health & Fitness center 6:45 p.m.	5 Enhance Fitness Hasselbring Senior Center 9:00 a.m. Arthritis Foundation Exercise Program Burton Senior Center 9:00-10:00am Arthritis Foundation Exercise Program Swartz Creek Senior Center 11am-12pm	6 Yoga Flow U of M-Flint Rec 11:00am
	8 Water Aerobics IHFC 9:00am Enhance Fitness Hasselbring Senior Center 9:00am Senior Stretch YMCA Downtown 10:00am Pound GAC 10:15am Arthritis Foundation Exercise Program Loose Senior Center 2:00-3:00pm Aqua Fitness U of M-Flint Rec 5:30-6:30 pm Water Aerobics IHFC 6:00pm	9 Enhance Fitness Berston Field House 10:00 a.m. Arthritis Foundation Exercise Program Grand Blanc Senior Center 10:00-11:00am Total Body Challenge 10:00-11:00am Brennan Senior Center Splash Bash U of M-Flint Rec 11:00 am Enhance Fitness Hamilton Health Clinic 12:00 pm Chair Aerobics Brennan Senior Center 12:30-1:15pm Hustle Aerobics Brownell STEM 4:30-5:30	10 Enhance Fitness Hasselbring Senior Center 9:00 a.m. Arthritis Foundation Exercise Program Davison Area Senior Center 10:00-11:00am Arthritis Foundation Exercise Program Forest Township Senior Center 12:15-1:00pm Enhance Fitness Hamilton Main Clinic 5:30 pm Community Yoga Crim Fitness Foundation 5:15-6:15pm Zumba GAC 6:45 p.m	11 Enhance Fitness Berston Field House 10:00 a.m. Arthritis Foundation Exercise Program Grand Blanc Senior Center 10-11:00am Total Body Challenge 10:00-11:00am Brennan Senior Center Chair Aerobics Brennan Senior Center 12:30-1:15pm Basic Yoga Insight Health & Fitness center 6:45 p.m.	12 Enhance Fitness Hasselbring Senior Center 9:00 a.m. Arthritis Foundation Exercise Program Burton Senior Center 9:00-10:00am Arthritis Foundation Exercise Program Swartz Creek Senior Center 11am-12pm	13 Yoga Flow U of M-Flint Rec 11:00am
	15 Water Aerobics IHFC 9:00am Enhance Fitness Hasselbring Senior Center 9:00 a.m. Senior Stretch YMCA Downtown 10:00 a.m.	16 Enhance Fitness Berston Field House 10:00 a.m. Arthritis Foundation Exercise Program Grand Blanc Senior Center 10:00-11:00am Total Body Challenge 10:00-11:00am Brennan Senior Center	17 Enhance Fitness Hasselbring Senior Center 9:00 a.m. Arthritis Foundation Exercise Program Davison Area Senior Center 10:00-11:00am	18 Enhance Fitness Berston Field House 10:00 a.m. Arthritis Foundation Exercise Program Grand Blanc Senior Center 10-11:00am	19 Enhance Fitness Hasselbring Senior Center 9:00 a.m. Arthritis Foundation Exercise Program Burton Senior Center 9:00-10:00am	20 Yoga Flow U of M-Flint Rec 11:00am

APRIL 2019 Fitness Calendar

FREE! Commit to Fit! Class Schedule

Pound GAC 10:15am Arthritis Foundation Exercise Program Loose Senior Center 2:00-3:00pm Aqua Fitness U of M-Flint 5:30pm Water Aerobics IHFC 6:00pm	Splash Bash U of M-Flint Rec 11:00 am Enhance Fitness Hamilton Health Clinic 12:00 pm Chair Aerobics Brennan Senior Center 12:30-1:15pm Hustle Aerobics Brownell STEM 4:30-5:30	Arthritis Foundation Exercise Program Forest Township Senior Center 12:15-1:00pm Community Yoga Brownell Elementary 4:30-5:30pm Enhance Fitness Hamilton Main Clinic 5:30 pm Zumba GAC 6:45 p.m	Total Body Challenge 10:00-11:00am Brennan Senior Center Chair Aerobics Brennan Senior Center 12:30-1:15pm Basic Yoga Insight Health & Fitness center 6:45 p.m.	Arthritis Foundation Exercise Program Swartz Creek Senior Center 11am-12pm	
22 Water Aerobics IHFC 9:00am Enhance Fitness Hasselbring Senior Center 9:00 am Senior Stretch YMCA Downtown 10:00 Pound GAC 10:15am Arthritis Foundation Exercise Program Loose Senior Center 2:00-3:00pm Aqua Fitness U of M-Flint 5:30pm Water Aerobics IHFC 6:00pm	23 Enhance Fitness Berston Field House 10:00 a.m. Arthritis Foundation Exercise Program Grand Blanc Senior Center 10:00-11:00am Total Body Challenge 10:00-11:00am Brennan Senior Center Splash Bash U of M-Flint Rec 11:00 am Enhance Fitness Hamilton Health Clinic 12:00 pm Chair Aerobics Brennan Senior Center 12:30-1:15pm Hustle Aerobics Brownell STEM Academy	24 Enhance Fitness Hasselbring Senior Center 9:00 a.m. Arthritis Foundation Exercise Program Davison Area Senior Center 10:00-11:00am Arthritis Foundation Exercise Program Forest Township Senior Center 12:15-1:00pm Community Yoga Brownell Elementary 4:30-5:30pm Enhance Fitness Hamilton Main Clinic 5:30 pm Zumba GAC 6:45 p.m	25 Enhance Fitness Berston Field House 10:00 a.m. Arthritis Foundation Exercise Program Grand Blanc Senior Center 10-11:00am Total Body Challenge 10:00-11:00am Brennan Senior Center Chair Aerobics Brennan Senior Center 12:30-1:15pm Basic Yoga Insight Health & Fitness center 6:45 p.m.	26 Enhance Fitness Hasselbring Senior Center 9:00 a.m Arthritis Foundation Exercise Program Burton Senior Center 9:00-10:00am Arthritis Foundation Exercise Program Swartz Creek Senior Center 11am-12pm	27 Yoga Flow U of M-Flint Rec 11:00am
29 Water Aerobics IHFC 9:00am Enhance Fitness Hasselbring Senior Center 9:00 a.m. Senior Stretch YMCA Downtown 10:00 a.m. Pound GAC 10:15am Arthritis Foundation Exercise Program Loose Senior Center 2:00-3:00pm Aqua Fitness U of M-Flint 5:30pm Water Aerobics IHFC 6:00pm	30 Enhance Fitness Berston Field House 10:00 a.m. Arthritis Foundation Exercise Program Grand Blanc Senior Center 10:00-11:00am Total Body Challenge 10:00-11:00am Brennan Senior Center Splash Bash U of M-Flint Rec 11:00 am Enhance Fitness Hamilton Health Clinic 12:00 pm Chair Aerobics Brennan Senior Center 12:30-1:15pm Hustle Aerobics Brownell STEM 4:30-5:30				

APRIL 2019 Fitness Calendar

FREE! Commit to Fit! Class Schedule

Class Descriptions & Locations

Basic Yoga (1 hour)

This class is a balanced flow of postures designed to build stamina, strength, and flexibility while promoting weight loss and general stress relief.

Insight Health & Fitness Center (IHFC)

Formerly Hurley Health & Fitness Center
4500 S. Saginaw St
Flint, MI 48507
(810) 893-6489



Community Yoga (1 hour) – This is a yoga class for all levels. Please wear comfortable and loose-fitting clothing. Some yoga mats will be available to borrow as well

Mindfulness@crim.org
(810)-235-7461



Crim Fitness Foundation

452 Saginaw Street Downtown Flint

Senior Stretch (1 hour) - This class will help improve overall strength and flexibility. The class is led by a certified senior fitness instructor who will guide you through the exercises at your own pace. This class is perfect for all ability levels.

YMCA Downtown Flint

411 E. 3rd Street
Flint, MI 48503
(810) 232-9622



Spin/HIIT – 30 min. A high intensity interval training (HIIT) session on the spin bikes. HIIT is about mixing high speed/high intensity intervals with moderate recovery periods.

POUND® transforms drumming into an incredibly effective way of working out. Instead of listening to music, you become the music in this exhilarating full-body workout that combines cardio, conditioning, and strength training.

Genesys Athletic Club (GAC)

801 Health Park Blvd
Grand Blanc, MI 48439
(810) 606-7300



Total Life Prosperity B.A.S.E. Fitness Series

Each class includes Balance and Flexibility, Aerobic Activity, Strength and Resistance Training, and Exercise Education

Chair Aerobics

Basic Seated functional fitness class for those who are overcoming mobility issues; includes aerobic activity, core work, and resistance training. Location: Brennan Senior Center

Total Body Challenge

Intermediate level workout which includes cardio, strength training, core work, balance and coordination, and flexibility training. Location: Brennan Senior Center

Hustle Aerobics

Advanced level workout that incorporates 45 minutes of non-stop cardio to the latest hustle songs followed 15 minutes bodyweight strength training. Location: Brownell & Eisenhower

IHFC Water Aerobics

A 1-hour class that will help you strengthen your muscles and cardiovascular system plus improve flexibility. Location: Insight Health and Fitness

Aquafitness/Splash Bash- An invigorating water workout. Ideal for all fitness levels. No swimming required

Yoga Flow: Learn yoga at a comfortable pace. Connect your mind's attention to your body's fluidity and movement -- promote strength, flexibility, coordination, agility, stamina and an overall experience of well-being.

University of Michigan-Flint Rec Center

401 Mill Street, Flint, MI 48502
(810) 762-3441



Enhance Fitness (1 hour) – A fun, energizing class geared toward improving overall functioning and well-being. Improve your cardiovascular fitness, strength, flexibility and balance!

TIMES & LOCATIONS:

Hasselbring Senior Center

1002 Home Ave. Flint, MI
(810) 766-7128 Mon, Weds, & Fri 9-10 am



Flint Farmers' Market- Tuesdays &

Thursdays 10:00-11:00 am
300 E. First St Flint, MI
(810) 232-1399

Berston Field House

3300 Saginaw St.
Flint, MI 48505



Thursdays, 10:00am

Main Clinic

2900 N. Saginaw Street
Flint, MI 48505
Wednesdays, 5:30 - 6:30pm

Genesee County Parks and Rec

Visit the calendar at: <http://geneseecountyparks.org/> to learn more about fun family events in Genesee County Parks!

For more information please go to:

- Geneseecountyparks.org or call 800-648-PARK
- Descriptions for classes such as Let's Hike It Baby, Yoga for Kids, Yoga for Families, and more can all be found at the online calendar on Commit2fit.com or geneseecountyparks.org



Vehicle City CrossFit

Crossfit is functional movements at high intensity relative to your ability. Anyone can do it! This is a one hour class that you will come in, warm up as a group, do the workout together and then go home feeling accomplished. Located at: 1473 Linden Road Flint. Corner of Corunna and Linden Road

Arthritis Foundation Exercise Program (1 hour) A low-impact physical activity program proven to reduce pain and decrease stiffness. The routines include gentle range-of-motion exercises that are suitable for every fitness level!

Grand Blanc Senior Center:

Tuesday & Thursdays 10am – 11am

Swartz Creek Senior Center:

Fridays 11am – 12pm

Forest Township Senior Center:

Wednesdays 12:30pm–1:30pm



Easy Ways to Donate to the Medical Society Foundation:

The Medical Society Foundation is engaged in a Capitol Campaign. The purpose of the Campaign is to grow the corpus to support the charitable activities of the Genesee County Medical Society. Those activities include public and community health, support for the underserved, and wellness initiatives.

To continue its good work, the Medical Society Foundation is asking you to consider leaving a legacy gift to the Foundation. If all, or even a significant portion of our membership left just a small part of our estates to the Foundation, the Foundation could continue helping this community in so many ways, by supporting the Medical Society.

To make a gift, simply use these words:

In your Trust, *"Grantor directs Trustee to distribute ___% of all assets then held in Trust or later added to this Trust to the Medical Society Foundation, to be held in an endowed fund and used in the discretion of its then existing board of directors in furtherance of the purposes of the Foundation"*

In your Will, *"I give, devise and bequeath ___% of my Estate to the Medical Society Foundation, to be held in an endowed fund and used in the discretion of its then existing Board of Directors in furtherance of the purposes of the Foundation"*

While this is not a subject that is comfortable to broach, it is an opportunity to support the Foundation which supports the Medical Society's charitable activities on behalf of the membership. Please give. You can give via a trust or will. You can give from your IRA. You can give appreciated stock, and you can give cash. Please support the organization which does so much on behalf of the medical community and the patients we serve.

Please feel free to contact Peter Levine, Executive Director at 810-733-9925 or plevine@gcms.org.



Don't Forget!
Donations are tax deductible!

Please feel free to contact Peter Levine, Executive Director at 810-733-9925 or plevine@gcms.org.

OBITUARY



Byron Schoolfield, MD

Dr. Byron Schoolfield passed away on March 18, 2019, at the age of 79. He leaves behind his wife of 53 years, Bobbie.

Dr. Schoolfield was born in Indianapolis, Indiana on in 1939. He graduated from Butler University and Indiana University School of Medicine. Dr. Schoolfield and Bobbie were married in 1965. He served an internship at Bronson Hospital in Kalamazoo. He served as Captain in the US Army, from 1967-1969, where he was a Flight Surgeon with the 174th Aviation Company in Duc Pho, Vietnam, He was awarded the Bronze Star. Dr. Schoolfield completed his residency in internal medicine at Hurley Medical Center and practiced in Flint for 46 years. He was a member of First Presbyterian Church, Genesee County Medical Society, Michigan State Medical Society, VFW, and Delta Tau Delta Fraternity.



The world needs more people who are committed enough to say YES.

Yes believes in possibility. Yes gives people a chance. Yes can turn thoughts and plans into life-changing actions. Sovita Credit Union serves Education and Healthcare Workers, their Families and their Communities.

Join today. sovitacu.org



The Genesee County Medical Society cordially invites you to a Quarterly Dinner Business Meeting

Sponsored by



and the MSU



Medical Community Town Hall

May 2, 2019

SOCIAL DETERMINANTS OF HEALTH WHAT IT MEANS TO YOU AND YOUR PRACTICE

Approximately 80% of health is determined by non-medical issues. Those issues are call Social Determinants of Health. SDOH impacts your patient's ability to achieve positive health outcomes from your medical care interventions.

Outcomes will play a large part in how physicians are paid in the future. This community is on the forefront of determining the best way to incorporate handling of SDOH into medical care and the practice of medicine. Come hear what to look for, what to do about it, how to intervene, how to communicate effectively, and how to improve outcomes of your medical interventions. You will also be brought up-to-date on what's going on locally to enhance the incorporation of SDOH into actual practice.

Traci Kim, MA, CMPE, Lecturer, Public Health and Health Sciences, University of Michigan - Flint, and Administrator of Complete Eye Care, what Social Determinants of Health means to your practice.
M. Susan Schneberger, LMSW, ACSW, JD, Senior Project Director, Genesee Children's Healthcare Access Program, speaking on the State Innovation Model, a detailed look at the data and the correction of negative curves.
Stacie Saylor, Michigan State Medical Society Reimbursement Ombudsperson.

Presenters:



Stacie Saylor



Traci Kim, MA, CMPE



Susan Schneberger, LMSW

Meeting Location:

Flint Golf Club
3100 Lakewood Drive
Flint, MI 48507

Evening Schedule:

6 pm, Registration & Social Hour
6:30 pm, Dinner
7 pm, Meeting
7:15 pm, Presentations

Please mail your reservation payment to:
Genesee County Medical Society
4438 Oak Bridge Drive, Suite B
Flint, MI 48532

Space is limited!

Please register by April 25, 2019

Please invite other physicians and practice managers to this meeting!
GCMS physicians, spouses, GCMSA, family members, practice staff
and other interested professionals are encouraged to attend!

- \$40.00 – GCMS Members, Spouses, Practice Managers, & Staff
- \$40.00 – Staff & Special Guests of Greater Flint Health Coalition
- \$25.00 – Resident Physicians & Medical Students
- \$75.00 – Non-Member Physicians, Spouses, Practice Managers, & Staff

Email Sherry at ssmith@gcms.org to register your attendance or call 810-733-9923 for more information.





Medical Society Foundation

Consider a donation to the Medical Society Foundation for all of your holiday giving. What a wonderful way of expressing your holiday sentiments while supporting important health related causes.

The Medical Society Foundation has been coordinating physician giving in Genesee County since 1987. This holiday season, why not use the Foundation to make sure your gifts to family, friends and colleagues help to improve the health and well-being of our community.

By giving to the Medical Society Foundation, you receive a great year-end tax benefit at the same time that you tell others how much their health – really means to you.

The Medical Society Foundation funds have been used to support the charitable activities of the Genesee County Medical Society.

Contributions can also be made in memory of an individual or to honor someone.

For questions or information on how your gift can help support the charitable activities of your Medical Society Foundation contact Peter A. Levine, MPH at (810) 733-9925 or at plevine@gcms.org.

Medical Society Foundation Mission Statement: The Medical Society Foundation is organized and does operate for the purpose of supporting continuing medical education and health-related charitable activities that further the cause of medicine.

Mail your donations to:
Medical Society Foundation
4438 Oak Bridge Drive, Suite B
Flint, MI 48532-5467



120 West Saginaw Street | East Lansing, Michigan 48823
517-337-1351 | msms@msms.org | www.msms.org

Application Code: _____

State and County Medical Society MEMBERSHIP APPLICATION

Join MSMS and your County Medical Society online at www.joinmsms.org

Join GCMS/MSMS

Renew Membership

- I am in my first year of practice post-residency.
- I am in my second year of practice post-residency.
- I am in my third year of practice post-residency.
- I have moved into Michigan; this is my first year practicing in the state.
- I work 20 hours or less per week.
- I am currently in active military duty.
- I am in full, active practice.
- I am a resident/fellow.

Male Female

First (legal) Name: _____ Middle Name: _____ Last Name: _____ MD DO

Nickname or Preferred Form of Legal Name: _____ Maiden Name (if applicable) _____

Job Title: _____

W Phone _____ W Fax _____ H Phone _____ H Fax _____

Mobile: _____ Email Address _____

Office Address Preferred Mail Preferred Bill Preferred Mail and Bill

City: _____ State: _____ Zip: _____

Home Address Preferred Mail Preferred Bill Preferred Mail and Bill

City: _____ State: _____ Zip: _____

*Please base my county medical society membership on the county of my (if addresses are in different counties): Office Address Home Address

*Birth Date: ____ / ____ / ____ Birth Country _____ MI Medical License #: _____ ME #: _____

Medical School _____ Graduation Year: _____ ECFMG # (if applicable) _____

Residency Program _____ Program Completion Year _____

Fellowship Program _____ Program Completion Year _____

Hospital Affiliation _____

• Primary Specialty _____ Board Certified: Yes No

• Secondary Specialty _____ Board Certified: Yes No

Marital Status: Single Married Divorced Spouse's First Name: _____ Spouse's Last Name: _____

Is your spouse a physician?: Yes No If yes, are they a member of MSMS?: Yes No

Within the last five years, have you been convicted of a felony crime?: Yes No If "yes," please provide full information: _____

Within the last five years, have you been the subject of any disciplinary action by any medical society or hospital staff?: Yes No

If "yes," please provide full information: _____

I agree to support the County Medical Society Constitution and Bylaws, the Michigan State Medical Society Constitution and Bylaws, and the Principles of Ethics of the American Medical Association as applied by the AMA and the MSMS Judicial Commission.

Signature _____ Date: _____

County Medical Society Use Only
Reviewed and Approved by: _____



HOW TO STAY OUT OF TROUBLE WITH THE NEW OPIATE LAWS

José T. Brown, Esq.
February 7, 2019

Practical side of the opiate epidemic and how to use MAPS as a tool rather than a screening device.

CONFLICT OF INTEREST DISCLOSURE

José T. Brown does not have any real or apparent conflict(s) of interests or vested interest(s) that may have a direct bearing on the subject matter of the continuing education activity.

Listed Chemicals Regulated Under the Controlled Substances Act
See 21 C.F.R. 95 1309, 1310, 1313 and 1314 for details

July 2017

Chemical	CONTROLLED SUBSTANCE PRODUCED														DOMESTIC	IMPORTS & EXPORTS		
	Amphetamine	Cocaine	N,N-Dimethylamphetamine	Ethamphetamine	Propyl 6-acetylcaps	GBL	Heroin	LSO	MDA	MDL	MDMA	Mephedrone	Mephedrone	Mephedrone			Phenylacetone (PAC)	Phenyl-2-propanone
1. N-Acetylthranthranic acid ²																	40	40
2. Alpha-Phenylacetone nitrile ³ (APAAN)																	0	0
3. Anthranilic acid ⁴																	30	30
4. Benzaldehyde																	4	4
5. Benzyl cyanide																	1	1
6. Ephedrine ^{5,7}																	0	0
7. Ergocristine ¹																	0	0
8. Ergonovine ¹																	0.010	0.010
9. Ergotamine ¹																	0.020	0.020
10. Ethylamine ¹																	1	1
11. gamma-Butyrolactone (GBL)																	0	0
12. Hydroiodic acid																	1.7	1.7
13. Hypophosphorous acid ¹																	0	0
14. Iodine																	0	0
15. Isosafrole																	4	4
16. Methylamine ¹																	1	1
17. 3,4-Methylenedioxyphenyl-2-propanone																	4	4
18. N-Methylamphetamine ¹																	1	1
19. N-Methylpseudoephedrine ¹																	1	1
20. N-phenethyl-4-piperidone (NPP)																	0	0
21. Nitroethane																	2.5	2.5
22. Norpseudoephedrine ¹																	2.5	2.5
23. Phenylacetic acid ¹																	1	1
24. Phenylpropanolamine ^{1,6,7}																	0	0
25. Phosphorus (red)																	0	0
26. Phosphorus (white or yellow)																	0	0
27. Piperidine ¹																	0.500	0.500
28. Piperonal (balisotropin)																	4	4
29. Propionic anhydride																	0.001	0.001
30. Pseudoephedrine ^{1,6,7}																	0	0
31. Safrole																	4	4
32. Acetic anhydride																	1,023	1,023
33. Acetone																	150	1,500
34. Benzyl chloride																	1	4
35. Ethyl ether																	135.8	1,364
36. Hydrochloric acid ^{1,6,7}																	N/C	222.3
36a. Hydrogen chloride gas ^{1,6,7}																	0	27
37. Methyl ethyl ketone (2-Butanone)																	142	1,455
38. Methyl isobutyl ketone ¹																	N/C	1,523
39. Potassium permanganate																	55	500
40. Sodium permanganate																	55	500
41. Sulfuric acid ^{1,6,7}																	N/C	347
42. Toluene																	150	1,594

¹ and its salts
² and its salts and esters
³ and its salts, optical isomers, and salts of optical isomers
⁴ Exports only, to all Western Hemisphere except Canada
⁵ Exports to all South American countries & Panama - Domestic for HCl gas
⁶ Threshold for HCl acid and sulfuric acid is 50 gallons, the equivalent weight in kilograms is shown
⁷ For pseudoephedrine, phenylpropanolamine and ephedrine drug products, see 21 USC 802(45)(A) and 21 C.F.R. Part 1314

<https://www.dea.gov/controlled-substances-act>

**CONTROLLED SUBSTANCES
- ALPHABETICAL ORDER -**

SUBSTANCE	DEA NUMBER	CSA SCH	NARC	OTHER NAMES
I-bromo-androsta-1,4-diene-3,17-dione	4000	III	N	
[3,2-c]-furazan-5 α -androstan-17 β -ol	4000	III	N	
[3,2-c]pyrazole-androst-4-en-17 β -ol	4000	III	N	
1-(1-Phenylcyclohexyl)pyrrolidine	7458	I	N	PCPy, PHP, roticyclidine
1-(2-Phenylethyl)-4-phenyl-4-acetoxypiperidine	9663	I	Y	PEPAP, synthetic heroin
1-[1-(2-Thienyl)cyclohexyl]piperidine	7470	I	N	TCP, tenocyclidine
1-[1-(2-Thienyl)cyclohexyl]pyrrolidine	7473	I	N	TCPy
13Beta-ethyl-17beta-hydroxygon-4-en-3-one	4000	III	N	
17Alpha-methyl-3alpha,17beta-dihydroxy-5alpha-androstane	4000	III	N	
17Alpha-methyl-3beta,17beta-dihydroxyandrost-4-ene	4000	III	N	
17Alpha-methyl-4-hydroxynandrolone (17alpha-methyl-4-hydroxy-17beta-hydroxyestr-4-en-3-one)	4000	III	N	
17Alpha-methyl-delta-1-dihydrotestosterone (17beta-hydroxy-17alpha-methyl-5alpha-androst-1-en-3-one)	4000	III	N	17-Alpha-methyl-1-testosterone
17 α -Methyl-5 α -androstan-17 β -ol	4000	III	N	
17 α -methyl-androst-2-ene-3,17 β -diol	4000	III	N	
17 α -methyl-androsta-1,4-diene-3,17 β -diol	4000	III	N	
17 α -Methyl-androstan-3-hydroxymine-17 β -ol	4000	III	N	
17 β -Hydroxy-androstano[2,3-d]isoxazole	4000	III	N	
17 β -Hydroxy-androstano[3,2-c]isoxazole	4000	III	N	
18 α -Homo-3-hydroxy-estra-2,5(10)-dien-17-one	4000	III	N	
19-Nor-4,9(10)-androstadienedione	4000	III	N	
19-Nor-4-androstenediol (3beta,17beta-dihydroxyestr-4-ene; 3alpha,17beta-dihydroxyestr-4-ene)	4000	III	N	
19-Nor-4-androstenedione (estr-4-en-3,17-dione)	4000	III	N	
19-Nor-5-androstenediol (3beta,17beta-dihydroxyestr-5-ene; 3alpha,17beta-dihydroxyestr-5-ene)	4000	III	N	
19-Nor-5-androstenedione (estr-5-en-3,17-dione)	4000	III	N	
1-Androstenediol (3beta,17beta-dihydroxy-5alpha-androst-1-ene; 3alpha,17beta-dihydroxy-5alpha-androst-1-ene)	4000	III	N	
1-Androstenedione (5alpha-androst-1-en-3,17-dione)	4000	III	N	
1-Methyl-4-phenyl-4-propionoxypiperidine	9661	I	Y	MPPP, synthetic heroin

Abbreviations: "NARC"= Narcotic, "CSA SCH"= CSA Schedule
Controlled Substances - Alphabetical Order
10-Dec-18

<https://www.dea.gov/controlled-substances-act>

**LIST I AND II REGULATED CHEMICALS
- ALPHABETICAL ORDER -**

REGULATED CHEMICAL	LIST NUMBER	DEA NUMBER	CITATION	EFFECTIVE DATE
ACETIC ANHYDRIDE	II	8519	Pub. L. 100-690	3/18/1989
ACETONE	II	6532	Pub. L. 100-690	3/18/1989
N-ACETYLANTHRANILIC ACID, salts & esters	I	8522	Pub. L. 100-690	3/18/1989
ANTHRANILIC ACID, salts & esters	I	8530	Pub. L. 100-690	3/18/1989
APAAN (Alpha-phenylacetacetone), salts, optical isomers, salts of optical isomers	I	8512	82 FR 32457	8/14/2017
BENZALDEHYDE	I	8256	Pub. L. 103-200	4/17/1994
BENZYL CHLORIDE	II	8570	Pub. L. 100-690	3/18/1989
BENZYL CYANIDE	I	8735	Pub. L. 100-690	3/18/1989
gamma-BUTYROLACTONE	I	2011	Pub. L. 106-172	2/18/2000
EPHEDRINE, salts, optical isomers, & salts of optical isomers	I	8113	Pub. L. 100-690	3/18/1989
EPHEDRINE - remove exemption for OTC single entity drug product	I	8113	Pub. L. 103-200	4/17/1994
EPHEDRINE-remove exemption for OTC combination products and establish a 24 g retail threshold. Threshold remains zero for single entity products. Mail order report requirements imposed. For more info, see 21 CFR Parts 1309, 1310, 1313	I	8113	Pub. L. 104-237	10/3/1996
ERGONOVINE or ERGOMETRINE & salts	I	8675	Pub. L. 100-690	3/18/1989
ERGOCRISTINE	I	8612	76 FR 17778	5/2/2011
ERGOTAMINE & salts	I	8676	Pub. L. 100-690	3/18/1989
ETHYLAMINE & salts	I	8678	Pub. L. 101-647	2/27/1991
N-ETHYLEPHEDRINE - superseded by 1994 action	I		Pub. L. 101-647	2/27/1991
N-ETHYLEPHEDRINE	REMOVED		Pub. L. 103-200	4/17/1994
ETHYL ETHER	II	6554	Pub. L. 100-690	3/18/1989
N-ETHYLSEUDOEPHEDRINE - superseded by 1994 action	I		Pub. L. 101-647	2/27/1991
N-ETHYLSEUDOEPHEDRINE	REMOVED		Pub. L. 103-200	4/17/1994

* Remain in Schedule III
List I and II Regulated Chemicals - Alphabetical Order
10-Dec-18

<https://www.dea.gov/controlled-substances-act>

**SCHEDULING ACTIONS
- ALPHABETICAL ORDER -**

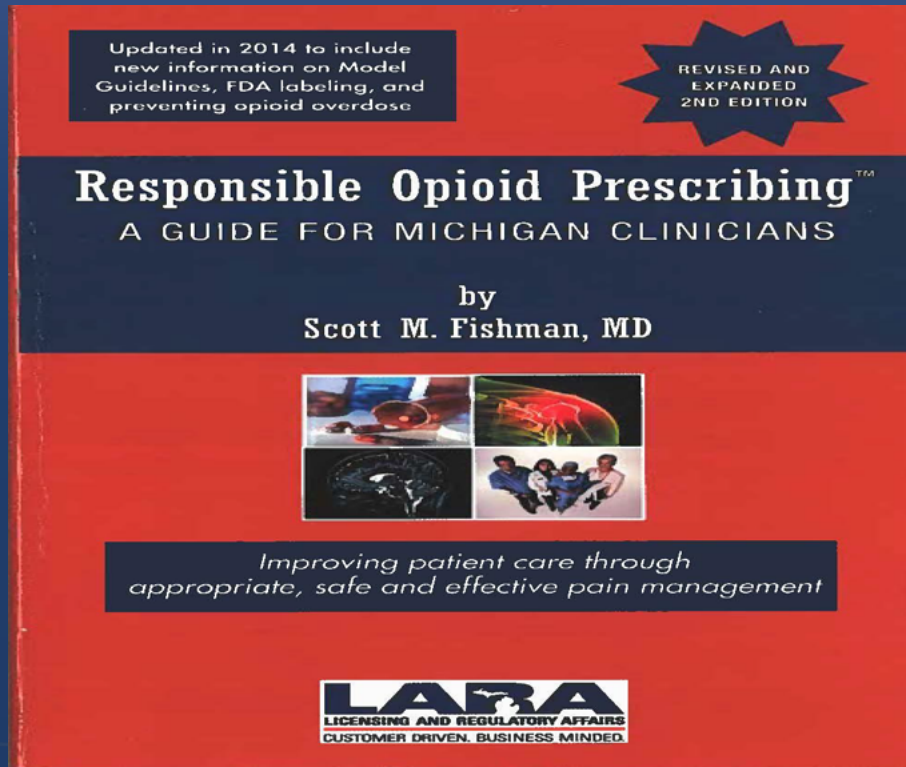
SUBSTANCE *Scheduled under 21 USC 811(h) **Extension of temporary control	FINAL ORDER				
	PROPOSAL PUBLICATION DATE	PUBLICATION DATE	FEDERAL REGISTER CITATION	EFFECTIVE DATE	CSA SCHEDULE
(1-PENTYL-1H-INDOL-3-YL)[2,2,3,3-TETRAMETHYLCYCLOPROPYL]METHANONE (UR-144)*		05-16-13	78 FR 28735	5/16/2013	I
[1-(5-FLUOROPENTYL)-1H-INDAZOL-3-YL]NAPHTHALEN-1-YL]METHANONE (THJ-2201)*		01-30-15	80 FR 5042	1/30/2015	I
[1-(5-FLUORO-PENTYL)1H-INDOL-3-YL][2,2,3,3-TETRAMETHYLCYCLOPROPYL]METHANONE(5-FLUORO-UR-144, XLR11)*		05-16-13	78 FR 28735	5/16/2013	I
1-(1,3-BENZODIAXOL-5-YL)-2-(ETHYLAMINO)-PENTAN-1-ONE (N-ETHYLPENTYLONE, EPHYLONE)*		08-31-18	83 FR 44474	8/31/2018	I
1-(3-TRIFLUOROMETHYLPHENYL)PIPERAZINE (TFMPP)	09-08-03	03-18-04	69 FR 12794	3/19/2004	I -> 0
1-(3-TRIFLUOROMETHYLPHENYL)PIPERAZINE (TFMPP) **		09-20-02	67 FR 59161	9/20/2002	I
1-(3-TRIFLUOROMETHYLPHENYL)PIPERAZINE (TFMPP) **		09-10-03	68 FR 53289	9/20/2003	I
1-(4-CYANO-BUTYL)-N-(2-PHENYLPROPAN-2-YL)-1H-INDAZOLE-3-CARBOXAMIDE (4-CH-CUMYL-BUTINACA)*		07-10-18	83 FR 31877	7/10/2018	I
1-(5-FLUOROPENTYL)-N-(2-PHENYLPROPAN-2-YL)-1H-PYRROLO[2,3-B]PYRIDINE-3-CARBOXAMIDE(5FCUMYL-PYACAL)*		07-10-18	83 FR 31877	7/10/2018	I
1-[1-(2-THIENYL)CYCLOHEXYL]PYRROLIDINE	03-20-89	07-06-89	54 FR 28414	7/6/1989	I
19-NOR-4,9(10)-ANDROSTADIENEDIONE (estra-4,9(10)-diene-3,17-dione)	04-25-08	12-04-09	74 FR 63603	1/4/2010	III
2-(4-BROMO-2,5-DIMETHOXYPHENYL)-N-(2-METHOXYBENZYL)ETHANAMINE (25B-NBOMe)*		11-15-13	78 FR 68716	11/15/2013	I
2-(4-CHLORO-2,5-DIMETHOXYPHENYL)-N-(2-METHOXYBENZYL)ETHANAMINE (25C-NBOMe)*		11-15-13	78 FR 68716	11/15/2013	I
2-(4-IODO-2,5-DIMETHOXYPHENYL)-N-(2-METHOXYBENZYL)ETHANAMINE (25I-NBOMe)*		11-15-13	78 FR 68716	11/15/2013	I
2,5-DIMETHOXY-4-(n)-PROPYLTHIOPHENETHYLAMINE (2C-T-7)	09-08-03	03-18-04	69 FR 12794	3/18/2004	I
2,5-DIMETHOXY-4-(n)-PROPYLTHIOPHENETHYLAMINE (2C-T-7)		09-20-02	67 FR 59163	9/20/2002	I
2,5-DIMETHOXY-4-(n)-PROPYLTHIOPHENETHYLAMINE (2C-T-7)		09-10-03	68 FR 53289	9/20/2003	I
2,5-DIMETHOXY-4-ETHYLAMPHETAMINE (DOET)	10-30-87	01-14-93	58 FR 4316	2/16/1993	I
2,5-DIMETHOXYAMPHETAMINE (DMA)	05-31-73	09-21-73	38 FR 26447	9/21/1973	I
3,4-DICHLORO-N-[(1-DIMETHYLAMINO)CYCLOHEXYLMETHYL]BENZAMIDE (AK-7921)		04-14-16	81 FR 22023	5/15/2016	I
3,4-DICHLORO-N-[2-(DIMETHYLAMINO)CYCLOHEXYL]-N-METHYLBENZAMIDE (U-47700)		04-20-18	83 FR 17486	4/20/2018	I
3,4-DICHLORO-N-[2-(DIMETHYLAMINO)CYCLOHEXYL]-N-METHYLBENZAMIDE (U-47700)*		11-14-16	81 FR 79369	11/14/2016	I
3,4-METHYLENEDI-OXY-N-ETHYLAMPHETAMINE	10-14-88	04-13-89	54 FR 14797	4/13/1989	I
3,4-METHYLENEDI-OXY-N-ETHYLAMPHETAMINE*		10-15-87	52 FR 38225	10/15/1987	I
3,4-METHYLENEDI-OXY-N-ETHYLAMPHETAMINE**		10-13-88	53 FR 40061	10/13/1988	I

Scheduling Actions - Alphabetical Order
10-Dec-18

<https://www.dea.gov/controlled-substances-act>

USING MAPS AS A TOOL RATHER THAN AS A SCREENING DEVICE

- MAPS can be utilized for the start of opiate therapy for chronic pain or dose escalation within 4 weeks.
- MAPS can be utilized to avoid concurrent benzodiazepine in opiate prescribing
- MAPS can be utilized for purposes of geographic demographics (does your patient travel over 50 miles for their opiate prescription?).



LAW AND ITS IMPACT ON MEDICINE

Why doctors hate lawyers?

“defensive medicine”
too many labs and tests
too little judgment

Medicine is all about managing risk, and the safe and effective use of opioids is no different.

CRITERIA FOR OPIATE PRESCRIBING LARA INVESTIGATIONS

1. Understanding pain.
2. Patient evaluation and risk stratification.
3. Development of a treatment plan and goals
4. Informed consent and treatment agreement
5. Initiating an opiate trial.
6. Ongoing monitoring and adapting to treatment plan.
7. Periodic drug testing.
8. Consultation and referral.
9. Discontinuing opiate therapy
10. Medical records.
11. Using MAPS to determine whether opiate abusers are utilizing the “Holy Trinity”

CONTACT INFORMATION

CLINE, CLINE & GRIFFIN, P.C.
503 S. SAGINAW ST., SUITE 1000
FLINT, MI 48502
(810) 232-3141: PHONE
www.ccglawyers.com
[Facebook.com/ccglawyers](https://www.facebook.com/ccglawyers)



msms.org

1

PRESCRIBING AND DISPENSING RESOURCES

FEBRUARY 7, 2019



2

MICHIGAN AUTOMATED PRESCRIPTION SYSTEM (MAPS)

- Michigan's prescription drug monitoring program
 - Tracks controlled substances, schedules 2-5 drugs
 - Can be utilized as a tool to assess patient risk
 - Intended to help prevent drug abuse and diversion at the prescriber, pharmacy, and patient levels
 - Contains over 120 million records
 - Data maintained for 5 years



3

MICHIGAN AUTOMATED PRESCRIPTION SYSTEM (MAPS)

- New MAPS platform (Appriss Health's PMP AWARe) launched on April 4, 2017
 - Response times average 0.4-0.8 seconds
 - Nearly 1.2 million requests submitted in December 2018
 - Number of registered users has rapidly increased
 - 42,635 prescribers
 - 8,005 pharmacists
 - 17,688 delegate users
- Appriss Health's NarxCare added to MAPS on December 4, 2017



4

CONTROLLED SUBSTANCE PRESCRIPTIONS FILLED IN MICHIGAN

	Total CS prescriptions dispensed	% change from previous year
2007	17,007,858	
2008	17,400,640	2.31%
2009	17,876,684	2.74%
2010	18,954,172	6.03%
2011	19,763,680	4.27%
2012	20,991,020	6.21%
2013	20,728,216	-1.25%
2014	20,904,764	0.85%
2015	21,472,326	2.71%
2016	21,092,674	-1.77%
2017	19,943,203	-5.45%
2018*	17,515,136	-12.17%

*Provisional



5

NARXCARE

- Additional program/tool provided by Appriss Health
 - Analyzes real time controlled substance data housed in MAPS
 - Helps prescribers make decisions based on a patient's controlled substance use history
 - Intended to raise prescriber awareness and trigger conversations between prescribers and patients
 - Get additional information if necessary
 - Review use patterns for unsafe conditions



6

NARXCARE

- Each NarxCare report includes type-specific use scores
 - Narcotics
 - Sedatives
 - Stimulants
- Type-specific use scores range from 000-999
 - Scores impacted by MME, number of prescribers and pharmacies, and overlapping prescriptions for each drug type
 - Last number of each score indicates the active prescriptions a patient should have if they're taking medications as prescribed



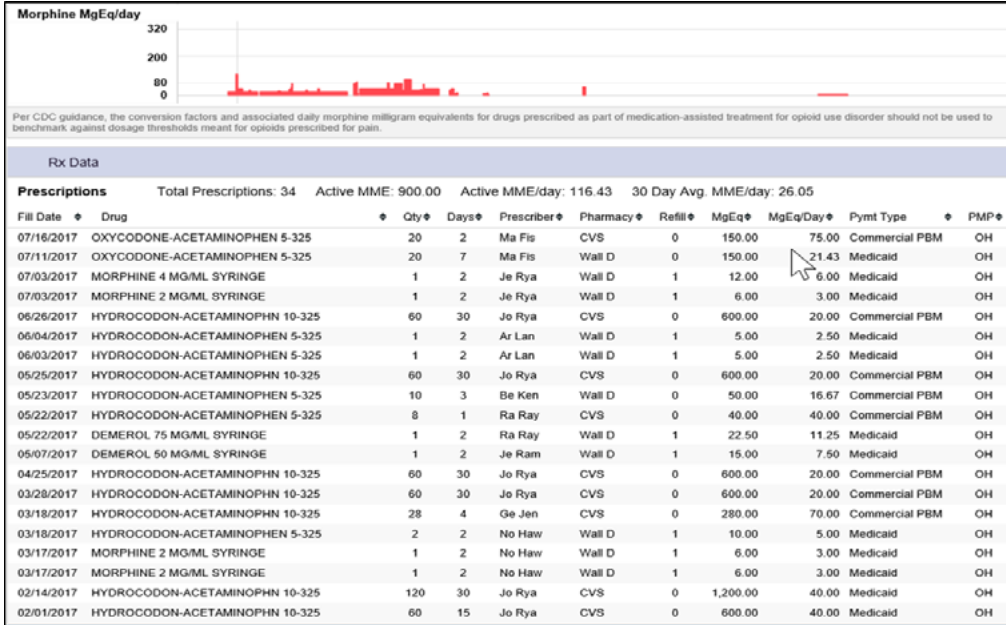
7

NARXCARE REPORT – LARA EXAMPLE



8

NARXCARE REPORT



NARXCARE REPORT

Name	Address	City	State	Zipcode	DEA
CVS	5483 Gentle Impasse	Home Park	OH	43242-6009	345796
CVS	7139 High Pond Walk	Randolph Landing	OH	45487-2143	345840
Wall Drug	3799 Foggy Dale	Hemer Corners	OH	45658-6817	345841
Wall Drug	4543 Iron Carrefour	Powers	OH	43803-2784	345839
Wall Drug	5639 Colton Dale Close	Cedar Springs	OH	43423-4846	345842
Wall Drug	8129 Easy Dell	Antiquity	OH	45300-0810	345843

© Appriss 2017. All rights reserved.



NARXCARE REPORT

Fill Date	Drug	Qty	Days	Prescriber	Pharmacy	Refill	MgEq	MgEq/Day	Pymt Type	PMP
02/01/2017	HYDROCODON-ACETAMINOPHEN 10-325	60	15	Jo Rya	CVS	0	600.00	40.00	Medicaid	OH
01/23/2017	OXYCODONE-ACETAMINOPHEN 5-325	60	7	Ma Fis	CVS	0	450.00	64.29	Medicaid	OH
01/12/2017	MORPHINE 2 MG/ML SYRINGE	1	30	No Haw	Wall D	1	6.00	0.20	Private Pay	OH
01/12/2017	MORPHINE 4 MG/ML SYRINGE	1	2	No Haw	Wall D	1	12.00	6.00	Private Pay	OH
01/10/2017	OXYCODONE-ACETAMINOPHEN 5-325	120	30	Jo Rya	CVS	0	900.00	30.00	Commercial PBM	OH
01/07/2017	DEMEROL 25 MG/ML SYRINGE	1	2	Ja Kin	Wall D	1	7.50	3.75	Private Pay	OH
01/03/2017	HYDROCODON-ACETAMINOPHEN 5-325	60	8	Ja Kin	CVS	0	300.00	37.50	Medicaid	OH
12/26/2016	HYDROCODON-ACETAMINOPHEN 5-325	60	8	Ja Nic	Wall D	0	300.00	37.50	Commercial PBM	OH
12/11/2016	HYDROCODON-ACETAMINOPHEN 5-325	28	5	He Hol	CVS	0	140.00	28.00	Private Pay	OH
12/07/2016	HYDROCODON-ACETAMINOPHEN 5-325	14	7	Pa Mar	CVS	0	70.00	10.00	Commercial PBM	OH
12/07/2016	HYDROCODON-ACETAMINOPHEN 5-325	2	2	Pa Mar	Wall D	1	10.00	5.00	Private Pay	OH
11/07/2016	HYDROCODON-ACETAMINOPHEN 5-325	10	5	Pa Mar	CVS	0	50.00	10.00	Private Pay	OH
11/06/2016	HYDROCODON-ACETAMINOPHEN 5-325	1	2	Ru Har	Wall D	1	5.00	2.50	Private Pay	OH
08/01/2016	OXYCODONE-ACETAMINOPHEN 5-325	20	3	Br Fer	Wall D	0	150.00	50.00	Commercial PBM	OH
11/12/2015	MORPHINE 2 MG/ML SYRINGE	1	30	Pa Mar	Wall D	1	6.00	0.20	Private Pay	OH

Name	Address	City	State	Zipcode	DEA
Fernandez, Bruce	4367 Pleasant Crossing	Five Points	OH	44262-6811	234853
Fisher, Marie	7175 Cozy Rabbit Vista	Anderson Ferry	OH	43622-1298	234756
Harris, Ruth	2003 Stony Nectar Cove	Kingsleys Corners	OH	45983-3673	234843
Hawkins, Norma	6763 Emerald Robin Parkway	Apple Grove	OH	45273-0588	234852
Holmes, Helen	8869 Burning Fox Impasse	Bayer Trailer Court	OH	45202-9797	234841
Jenkins, Gerald	9393 Lost Field	Maple	OH	43654-8273	234851
Kennedy, Beverly	3099 Umber Pathway	Damascus	OH	44609-5908	234847
King, James	3355 Rustic Cloud Wynd	Yankee Crossing	OH	45430-6188	234845
Lane, Arthur	2331 Cozy Port	Holiday City	OH	45620-5987	234844
Martin, Patricia	7600 Shady Hickory Stead	Fort Jennings	OH	44170-2847	234850
Nichols, Jason	9093 Hidden Pioneer Lookout	East Gardens	OH	43321-4331	234848
Ramos, Jesse	9166 Bright Pond Crescent	Belmore	OH	45970-9899	234840
Ray, Ralph	1467 Little View Townline	West Akron	OH	43739-7351	234849
Ryan, Jerry	163 Sleepy Edge	Oakthorpe	OH	44740-5125	234846
Ryan, Jonathan	9892 Silent Elk Ramp	Sites Lake Cottage Area	OH	44502-5801	234842



NARXCARE REPORT – RESOURCES TAB

Menu > Patient Alerts (1)

RxSearch > Patient Request > Johnny Williams

Williams, Johnny Age: 33M Date: 7/17/2017 | NARX REPORT | RESOURCES

Access to Treatment

Rapidly find the 30 closest MAT providers for this patient. The patient's zip code is pre-populated if available.

Step 1 Enter the zip code to center the search around:

Step 2 Click submit and print form:

First	Last	Dep.	Address	City	Cont.
Dr. David	Beane	M.D.	1338 Colgate Drive Suite B	Marble	West Coast
Dr. Ashokumar	Kaneri	M.D.	7760 West VOA Park Drive Suite C	West Chester	Bucke Court
Dr. I.	Stafford	M.D.	1081 Bernard Road	New Vienna	Ohio Court
Dr. Ramalingam	Selvarajah	M.D.	1649 Brice Reynoldsburg	Frank	

Educational Resources

Click the associated link and print. More information here

What You Need to Know

PRESCRIPTION OPIOIDS: WHAT YOU NEED TO KNOW

Open Document

Opioids and Chronic Pain

PROMOTING SAFER AND MORE EFFECTIVE PAIN MANAGEMENT

Open Document

Pregnancy and Opioids

PREGNANCY AND OPIOID PAIN MEDICATIONS

Open Document



MAPS TUTORIALS

- https://www.michigan.gov/lara/0,4601,7-154-89334_72600_72603_55478_85993---,00.html



Video Tutorials

Introduction to MAPS & NarxCare
Understanding NarxCare Scores
Viewing and Updating MAPS User Profile
Submitting a MAPS Patient Request
Performing a MAPS Bulk Patient Search

Important Documents

Registration Tutorial
Patient Search Tutorial
Bulk Patient Search Tutorial
User Profile Tutorial
Quick Reference - Patient Search

Support Guides

User Support Manual



13

PRESCRIBER REPORTS

- Intended to give prescribers insight into their opioid prescribing patterns in comparison to their peer group
 - Monthly average of patients to that were prescribed an opioid
 - Monthly average of opioid prescriptions written
 - Top three Schedule II-V drugs prescribed based on the number of prescriptions prescribed during the reporting period
 - Prescriptions by daily Morphine Milligram Equivalent (MME) during the reporting period



14

PRESCRIBER REPORTS

- Intended to give prescribers insight into their opioid prescribing patterns in comparison to their peer group
- Per LARA, a “peer group” is based upon the specialty selected by the licensee at the time of registration
 - Licensee can update if another peer group is more appropriate
- LARA provides the following disclaimer:

“Comparisons with peer groups are meant to give prescribers a point of reference. It is recognized that no two practice settings are identical or would call for the exact practice methods.”



15

PRESCRIBER REPORTS

- Identifies other metrics:
 - Number of patient prescribed both an opioid and a benzodiazepine (or an opioid, benzodiazepine, and carisoprodol) for an overlapping period within the reporting period
 - PDMP usage
 - Patients exceeding multiple prescriber thresholds
 - Patients exceeding multiple pharmacy thresholds
 - Opioid treatment duration
 - Prescription volume
 - Anxiolytic/sedative/hypnotic prescribing



16

MSMS RESOURCES

- Currently available
 - MSMS webpage – www.msms.org/beaware
 - Prescribing law alert
 - Frequently Asked Questions
 - Webinars on registering and utilizing MAPS
 - Pain Management on-demand webinars
 - Timeline and checklist
 - Links to helpful resources



17

OTHER KEY RESOURCES

- Centers for Disease Control and Prevention
 - Prescribing guidelines and resources - https://www.michigan.gov/msp/0,4643,7-123-72297_34040_77095-394452--,00.html
- Substance Abuse and Mental Health Services Administration
 - <https://www.samhsa.gov/topics/prescription-drug-misuse-abuse>
- US Drug Enforcement Administration
 - <https://www.getsmartaboutdrugs.gov/>
- National Institute on Drug Abuse
 - <https://www.drugabuse.gov/>
- Partnership for Drug-Free Kids
 - <https://drugfree.org/>



19

OTHER KEY RESOURCES

- State of Michigan
 - General - www.michigan.gov/opioids
 - MAPS - https://www.michigan.gov/lara/0,4601,7-154-72600_72603_55478---,00.html
 - MSP Angel Program - https://www.michigan.gov/msp/0,4643,7-123-72297_34040_77095-394452--,00.html
 - MDEQ drug disposal- https://www.michigan.gov/deq/0,4561,7-135-3312_4118_74618---,00.html
- Michigan Health & Hospital Association
 - <https://www.mha.org/Issues-Advocacy/Opioid-Epidemic>
- Michigan OPEN
 - <http://michigan-open.org/>
- Families Against Narcotics
 - www.familiesagainstnarcotics.org



18

Thank you!

*Stacey P. Hettiger
Director of Medical & Regulatory Policy
Michigan State Medical Society
(517) 336-5766
shettiger@msms.org*



120 West Saginaw Street, East Lansing, Michigan 48823
Tel: (517) 337-1351 eMail: msms@msms.org



20