

THE Bulletin

OCTOBER 2013 Volume 90, Number 10

**COME TO THE BALL ON NOV. 9
RESERVE NOW!**

**LAST INSTALLMENT OF
COMMUNITY SCORECARD DATA**

**ENJOY COVERAGE OF
THE TALENT SHOW**

GENESEE COUNTY MEDICAL SOCIETY
Organized Medicine's Leading Edge

Do your patients know their numbers?



Women know their shoe size and phone number... So why shouldn't they learn their UltimateMamm™ scores for more proactive breast health monitoring?

Gail Score

+

Breast Tissue Density

=

UltimateMamm™

Knowing these numbers means understanding risk factors – for a better chance of detecting breast cancer at an earlier, more treatable stage. It's all part of our UltimateMamm™ – a mammogram and more from RMI.



rmipc.net ■ (810) 732-1919

Lennon Rd, Flint ■ Villa Linde Pkwy, Flint ■ Fenton ■ Grand Blanc ■ Davison ■ Saginaw

EDITOR

Daniel J. Ryan, MD

ASSOCIATE EDITOR

Peter Thoms, MD

GCMS OFFICERS 2012-13

President – Raymond Rudoni, MD

President Elect – Shafi Ahmed, MD

Immed. Past Pres. – Laura Carravallah, MD

Secretary – Jagdish Shah, MD

Treasurer – Shafi Ahmed, MD

MSMS OFFICERS 2012-13

Treasurer – Venkat Rao, MD

DELEGATES

Shafi Ahmed, MD

Qazi Azher, MD

Amitabha Banerjee, MD

Cathy Blight, MD

Laura Carravallah, MD

Edward Christy, MD

Pino Colone, MD

Deborah Duncan, MD

Hesham Gayar, MD

Mona Hardas, MD

John Hebert III, MD

Paul Lazar, MD

Sreen Mannam, MD

Raymond Rudoni, MD

Jagdish Shah, MD

Jawad Shah, MD

Tarik Wasfie, MD

ALTERNATE DELEGATES

Suresh Anné, MD

Niketa Dani, MD

F. Michael Jaggi, DO

Rima Jibaly, MD

Farhan Khan, MD

Samasandrapalya Kiran, MD

Nita Kulkarni, MD

AppaRao Mukkamala, MD

Gerald Natzke, Jr., DO

Lawrence Reynolds, MD

Brenda Rogers-Grays, DO

Daniel Ryan, MD

Robert Soderstrom, MD

Peter Thoms, MD

Venu Vadlamudi, MD

DISTRICT DIRECTORS VI

S. Bobby Mukkamala, MD

John Waters, MD

OTHER BOARD MEMBERS

Khalid Ahmed, MD

Jagdish Bhagat, MD

Gary Johnson, MD

James Walter, MD

Executive Director – Peter A. Levine, MPH
Executive Secretary – Becky Doty

THE Bulletin

Read by 96% of GCMS members.

FEATURE ARTICLES

| | |
|--|----|
| <i>The Genesee Gem</i> | 14 |
| <i>GCMS Talent Show</i> | 16 |
| <i>Dinner Business Meeting Minutes</i> | 24 |
| <i>GFHC Community Data Scorecard</i> | 26 |
| <i>Trails for Kids Program</i> | 28 |
| <i>Buckham Alley Festival</i> | 29 |

REGULARS

| | |
|------------------------------|----|
| <i>President's Message</i> | 4 |
| <i>Editorially Speaking</i> | 6 |
| <i>Director's Message</i> | 8 |
| <i>Practice Managers</i> | 12 |
| <i>Commit to Fit</i> | 13 |
| <i>Board Meeting Minutes</i> | 32 |
| <i>Your \$ at Work</i> | 36 |
| <i>Monthly Meetings</i> | 36 |
| <i>Happy Birthday Doctor</i> | 38 |
| <i>Classifieds</i> | 38 |

Our Vision

That the Genesee County Medical Society maintain its position as the premier medical society by advocating on behalf of its physician members and patients.

Our Mission

The mission of the Genesee County Medical Society is leadership, advocacy, education, and service on behalf of its members and their patients.

PLEASE NOTE

The GCMS Nominating Committee seeks input from members for nominations for the GCMS Presidential Citation for Lifetime Community Service. The Committee would like to be made aware of candidates for consideration.

THE BULLETIN

Published by the Genesee County Medical Society Publication Office
4438 Oak Bridge Drive, Suite B, Flint, Michigan 48532
Phone (810) 733-6260 Fax (810) 230-3737

By subscription \$60 per year. Member subscription included with Society dues. Contributions to THE BULLETIN are always welcome. Forward news extracts or material of interest to the staff before the 5th of the month. All statements or comments in THE BULLETIN are the statements or opinions of the writers and are not necessarily the opinion of the Genesee County Medical Society.

This publication
designed and
edited by



www.natnaskypublishing.com (248) 547-9749

TALENT REDEFINED

We had artists, authors, dancers, singers, musicians, entrepreneurs and much more! For those who had the pleasure of joining us for the Sept. 6th Talent Show/Business Meeting, I am sure they would agree that our Society, our Alliance and our community has extraordinary talent!

As I strolled around the ballroom at the Genesys Conference Center I was absolutely amazed at the creativity, attention to detail, and pure talent which was on display for all to see. Beautiful paintings, hand crafted jewelry, and art work of all shapes and sizes filled the display tables.

The art show was followed by a superb meal and a quick, but to the point, business meeting. The program continued with the performance of talent part. The evening was emceed by Sue Lauber who kept things



Ray Rudoni, MD

moving. The Talent Show committee compiled a wonderful group of our friends and family who entertained us for an hour. Please see the article about the event later in this issue for a complete break down of artists and performers.

The evening turned out to be a smashing success and a welcomed break from lectures, legislative updates and the ongoing talk of professional issues. Many thanks to the Talent Show Committee: Chair Cheryl Thoms, Sue Lauber, Allen Turcke, MD, Carol Hassan, Beth Schumacher and Pete Levine. This event was made even better

by our three generous sponsors: Hurley Medical Center, Renue Physical Therapy, and Swartz Ambulance and Medical Transport.

As I watched and admired the many talents of my friends and colleagues, I thought about what could I possibly do to contribute to an evening of such talent? I don't play an instrument (air guitar does not count), I cannot sing to save my life, and the only drawing I ever engage in is that of a laceration repair picture in the medical record. Then it hit me, the one thing I am really good at is applauding, and that's what I did, non-stop for an hour! Thanks everyone.

As this is my last President's Message, I wanted to take a moment to thank each and every one of you for your support and the opportunity to serve as your President this past year. To all the Board Members, Committee Members, and our outstanding general membership, I have enjoyed being at the helm for this past year and look forward to continuing to serve for many years to come. Finally, to my friend and colleague Pete Levine: You are the left ventricle of this organization. We are fortunate to have you as our Executive Director.



ELITE MEDICAL BILLING SPECIALISTS



Serving Michigan's Health Care Community Since 1994

Working Together With You to Maximize the Financial Health of Your Practice

Services Tailored to Your Specific Needs:

- Full Billing Services
- ICD-10 Consulting
- Financial Management
- Business Planning
- Electronic Health Records
- Credentialing Services
- E-Prescribing
- Accounts Receivable Recovery Services

All Medical Specialties Welcome

PH: 248-478-5234 • FAX: 248-478-5307

www.elitemedicalbill.com

We Are Your Medical Reimbursement Specialists

We fight frivolous claims. We smash shady litigants. We over-prepare, and our lawyers do, too. **We defend your good name.** We face every claim like it's the heavyweight championship. We don't give up. We are not just your insurer. We are your legal defense army. **We are The Doctors Company.**

The Doctors Company built its reputation on the aggressive defense of our member physicians' good names and livelihoods. And we do it well: Over 82 percent of all malpractice cases against our members are won without a settlement or trial, and we win 87 percent of the cases that do go to court. So what do you get for your money? More than a fighting chance, for starters. The Michigan State Medical Society exclusively endorses our medical malpractice insurance program, and we are a preferred partner of the Michigan Osteopathic Association. To learn more about our program benefits, call our East Lansing office at (800) 748-0465 or visit www.thedoctors.com.



www.thedoctors.com

TIME HAS COME TODAY

In fair weather prepare for foul.

Thomas Fuller (1654-1734)

Just a few questions to answer to start off the month of October. Have you reached the major milestone of your 60th birthday? Have you received a shingles vaccine? Have you encouraged family, friends, patients and staff members to get the vaccine? If not, why not? What are you waiting for? Possibly an attack of shingles if you are so unlucky.

First some facts about shingles, medically known as varicella zoster and sometimes referred to as zona. Shingles is caused by the varicella zoster virus (vzv). This is the same virus that causes chicken pox in children and young adults and comes back to haunt unfortunate victims. Even though the chicken pox rash resolves, the virus is not necessarily eliminated from the body but remains dormant in the nerve cell bodies of dorsal root, cranial nerve, and autonomic nerve ganglion. Years later the virus can reactivate, for unknown reasons, and travel down the nerve axon causing a painful inflammatory rash of the skin in the affected dermatome. After the rash resolves, typically in one to four weeks, residual nerve pain called post-herpetic neuralgia is a common experience. Besides the painful skin rash, there is the risk of secondary bacterial infection, muscle weakness, and corneal nerve damage and intraocular inflammation when the ophthalmic branch of the trigeminal nerve is involved.

The name herpes zoster is derived from the Greek word herpein which means “to creep” (think reptiles and herpetology) and zoster which means a belt or girdle referring to the belt-like rash of the specific dermatomal involvement. The term shingles has nothing to do with the covering on your roof but is derived from the Latin word cingulus, which also means girdle.

A British study in the mid-1960s estimated that of all the people living to age 85, 50% will suffer an episode



Daniel Ryan, MD

of shingles and 1% will have more than one attack. Anti-viral drug therapy, oral and/or intravenous, can reduce the severity of the disease and ease the post-herpetic neuralgia symptoms if it is started promptly after the rash appears. However, this is considered second-line therapy. Therefore, the vaccine developed to prevent shingles, Zostavax, is now the most effective method to reduce the chance of an attack and prevent post-herpetic neuralgia. Zostavax is a larger dose of the attenuated virus administered to protect children from chicken pox. It is estimated that Zostavax will prevent one

case of shingles for every 70 people vaccinated resulting with an estimated savings of \$82-\$103 million in patient care costs annually in the United States.

The Centers for Disease Control and Prevention recommends the shingles vaccine for persons over age 60. It is not effective treatment for active shingles or subsequent neuralgia. Interestingly, adults receive an immune boost from children infected with chicken pox, which may prevent 25% of cases in shingles in unvaccinated adults. But this phenomenon is becoming less of a factor because of the frequent vaccination of children against varicella today. The most common adverse effect of the vaccine is swelling and redness at the injection site. Headache, fever, and swollen lymph nodes are less common side-effects. Allergic reactions are rare but can occur in persons allergic to gelatin and Neomycin.

The shingles vaccine is a cost-effective and medically indicated tool to reduce the morbidity of herpes zoster. It has few adverse effects and should be considered for administration to all persons over age 60 that had chicken pox as a child. Now go out and get yours today.

FOR SEEKING

if your cash flow is as effective as your treatments.



Cash Flow Insight™ | for the achiever in you®

Introducing Cash Flow Insight powered by PNC CFO — a suite of user-friendly online tools that can help you understand and project your practice's cash flow, so you can turn insight into action. Try it at no cost today*. Call the Cash Flow Insight Center at **855-762-2361**, stop by any PNC branch or go to pnc.com/cashflowinsight

PNC | CFO™
Cash Flow Options



*Offer requires a PNC Business Checking account and enrollment in PNC Online Banking. Offer valid during your current statement cycle period and two additional statement cycles, which constitutes your free trial period. One free trial period per customer, based on the enrollment date of the first account you enroll in Cash Flow Insight. Your free trial period for all accounts in Cash Flow Insight ends at the same time. At the end of your free trial, you will remain enrolled in Cash Flow Insight and be charged a fee of \$10/month. If you do not want to continue with Cash Flow Insight, you may opt out of the service on your Preferences page within Cash Flow Insight. Beyond the trial period, certain account types have Cash Flow Insight for no additional monthly fee, including Business Enterprise Checking, Industry Solutions Checking and Retail Businesses Checking. Cash Flow Insight and CFO: Cash Flow Options are service marks of The PNC Financial Services Group, Inc. ©2013 The PNC Financial Services Group, Inc. All rights reserved. PNC Bank, National Association. Member FDIC

SO MUCH ARTISTIC AND LEADERSHIP TALENT HERE

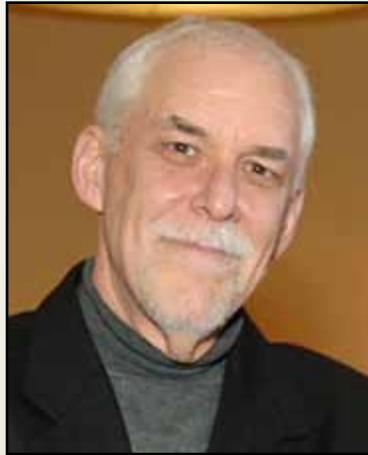
Wow, this is a great issue of *The Bulletin*.

Those of you who missed the GCMS/GCMSA Talent and Art show really missed an event. Please look at the photos and article about the talent show later in this issue of *The Bulletin*.

It is rare in the medical world to have an evening of pure unadulterated fun and relaxation. It is also fascinating to see what several of our more quiet colleagues and family members do in their spare time. It is impossible to provide a photographic documentation of how wonderful the displays were. There is no possibility that the beauty and the fun of the performances can be translated in a magazine. Next time, show up.

This issue of *The Bulletin* also contains the last portion of data from the Greater Flint Health Coalition regarding this community. It is part of a series of data segments that have been provided by *The Bulletin*. Please take the time to review it. In addition, this issue contains a request for donations to the Medical Society Foundation. Please take a moment to consider that in your end-of-year planning.

Don't forget that on Nov. 9, the President's Ball will be held at Warwick Hills Country Club. This is going to be a total blast. Do not miss it. It will be unique and wonderful. Make your reservations as soon as possible. Please take note of the notice in this issue of *The Bulletin* and also of the invitation which will come to your house soon, if it has not already. Come on out



Peter Levine, MPH

and honor Dr. Raymond Rudoni for his great year as president, as well as all of the past GCMS and GCMSA presidents.

Finally, this is the time of year that is rough on staff. After a year with a president, we become attached to them. This year is no different. This year I had more time to get to know Dr. Rudoni due to issues and circumstances. Our time together was productive and fun! He is a natural leader, intuitive and quick, but also able to take on tough issues and keep the organization moving according to its plan. And, boy, can he run a meeting.

This is also the time of year when we get excited about new board members and new officers and a new President, with whom we will form a bond, as well. Next month, after the ball, Dr. Shafi Ahmed will be President. Please make him feel welcome, and when he calls for help with an issue which benefits us all, please respond!!



We place your interests first and strive for your success and satisfaction above all.

Trust us to provide payment solutions to your payment challenges.

810.750.6822
mktg@TheRybarGroup.com
www.TheRybarGroup.com



FOR LEASE

METROPOLITAN BUILDING

10683 S. Saginaw Street, Grand Blanc, MI 48439



SUITE B - MEDICAL AREA 3,378 SQ. FT.

- Patient Seating/Child Area
- Reception/Clerical Work Area
- Back Area Clerical Work Station
- 6 Exam Rooms, Fully Plumbed
- 3 Restrooms
- Break Room
- 4 General Offices
- X-Ray Area



SUITE A - MEDICAL AREA 2,786 SQ. FT.

- Patient Seating Area
- Reception/Clerical Work Area
- Patient File/Storage (Sideways Sliding System)
- 6 Operatories, Fully Plumbed
- 3 Restrooms
- Break Room
- Lab Room
- 1 General Office
- X-Ray Area



Contact: James Wascha or
Renee Waswick (810) 695-6153

e-mail: jw@waschalaw.com
or rwaswick@comcast.net

Clinical Trials for Pediatric Oncology Patients Available at Hurley

Hurley Medical Center's pediatric oncology program treats children with leukemia or cancer without necessitating travel to Detroit or Ann Arbor.

Hurley's expertise in treating childhood cancer is exemplified through its status as an approved institution of Children's Oncology Group (COG)—the International Multi-institutional clinical trial group for all pediatric malignancies including leukemia. As an approved COG institution, Hurley has to treat at least 12 new patients every year.

Did you know that:

- Leukemia in teenagers and young adults, when treated with a pediatric research protocol, is more curable than when treated with regimens of chemotherapy made for adults;
- Clinical research studies often use cutting-edge drugs that are not commercially available and show promising results; and
- These drugs are available free-of-charge for patients who are registered on study protocols.

For more information, call 810.262.7303.



Announcement

GCMS members now entitled to 15% discount on automobile and homeowners insurance.

For details, contact:

POTTER & ROOSE INSURANCE
810-767-8590

Providers of insurance for the GCMS
& its members for 50 years.

906 Mott Foundation Bld., Flint, MI 48502

The Greater Flint Infectious Disease Forum & Hurley Medical Center

PRESENT:

**ID Symposium:
CRE - An Urgent Threat**

Wednesday, October 30, 2013

Holiday Inn Gateway Center
5:30-7:00 p.m.

To Register, please call
1-855-310-3627

The Genesee County Medical Society
and the Genesee County Medical Society Alliance
Cordially invite you to the

PRESIDENTS' BALL

**SOPRANOS
STYLE**

**SATURDAY
11.09.13**

WARWICK HILLS GOLF AND COUNTRY CLUB
G-9057 S Saginaw Rd
Grand Blanc Township, MI 48439

6:00 PM Cocktail Hour
7:30 PM Dinner followed by Entertainment

Valet parking available | Black tie optional
\$85 per ticket | Cash bar

RSVP Friday, October 25, 2013 to Becky Doty at
bdoty@gcms.org or (810) 733-9923

PHYSICIANS NEEDED AT THE EMERGENCY MEDICAL CENTER OF FLINT

Various shifts are available for part-time.

Full time may be an opportunity as well.

Must be willing to do minor stitches, infants & children, splinting,
and minor eye & ear procedures.

This is a classic urgent care, much like family practice.

Hours of operation:

12-9 pm, 7 days a week, closed on major holidays

Located at 2284 S. Ballenger Hwy., Suite 2, Flint, 48503.

Contact Joyce Ash at 810-232-2710 or Pete Levine at 810-733-9925.



Practice Managers Meet with Blue Cross Provider Outreach Director

On Aug. 22, a large group of practice managers met with Dan Martin, the new Director of Provider Outreach at Blue Cross/Blue Shield of Michigan. He and Tina Gach, a provider consultant for Blue Cross, and Kate Simmons discussed major changes which will be brought about by the Affordable Care Act, ICD-10, insurance exchanges and other issues which would affect practices. Mr. Martin also discussed referral issues and some new products.

The September practice managers' session is intended to include Mr. Martin again as well as a representative from HealthPlus to discuss new referral systems at Blue Care Network called Care Advantage and new products relating to the health information exchanges for Blue Cross, Blue Care Network and HealthPlus.

Year End Report to the Members on the Commit to Fit/4x4 Wellness Grant

By Nick Bendall

The Commit to Fit! and Michigan 4x4 wellness grant period comes to a close on October 1st, 2013. Although the Commit to Fit! program will continue helping Genesee County to establish healthy lifestyle behaviors, my time with the Genesee County Medical Society has come to its completion. Consequently, I would like to provide a short summary of the past year of Commit to Fit! activities in which I have been involved.

My role with the Commit to Fit! campaign this past year has focused on providing individual physicians and groups of physicians and physician offices with free materials and resources for use during office visits with patients and to improve the fitness levels of staff. The materials serve to help physicians promote healthy lifestyle behaviors (proper nutrition, physical activity, etc.) and include posters, brochures, pocket cards, and prescription pads for activity/nutrition/stress reduction. The program will continue to offer free exercise classes held at local fitness centers (Genesys Athletic Center, Hurley Health & Fitness Center, and UM-Flint Recreation Center). To date the grant has engaged over 140 physician offices and over 400 individual physicians to promote the message of Commit to Fit!, which centers on increasing the practice of healthy behaviors in order to improve overall health and wellbeing.

Physician engagement with the Commit to Fit! program has been a great success thus far. The level of physician engagement speaks to the quality of clinical care and their dedication to improving health outcomes within Genesee County. There are now nearly 2,600 Commit to Fit! and 4x4 wellness posters displayed in physician offices across the county. On top of this, 20,000 4x4 pocket cards, 5,500 Commit to Fit! brochures, 350 health prescription pads, and 70 physician toolkits have been provided to offices, free of charge. These resources increase the efficiency and practicality of discussing and prescribing physical activity, proper nutrition, and other healthy behaviors with your patients.

Please continue to utilize Commit to Fit! and all of its resources. If you haven't done so yet, visit the website at commit2fit.com. The website offers a number of ways to track physical activity, nutrition, hydration, and contains updated info for our free exercise classes as well as many community activities. To request any of the Commit to Fit! office materials you can contact the Genesee County Medical Society at 810-733-9923 as well as the Greater Flint Health Coalition offices at 810-232-2228.

Finally, I want to thank all of the physicians and office staff that have taken time out of their busy schedules to allow me to visit their office, discuss the program, and share/post materials. I am fortunate to have worked alongside such healthcare providers and have thoroughly enjoyed my time with the Genesee County Medical Society.



THE GENESEE GEM

By Peter S. Thoms, MD

Have you seen it?

Would you recognize it, if you did see it?

If you saw it, would you be able to price it?

Well, it has not been hidden. And it is priceless.

It has been around for decades, but undervalued and under appreciated.

It will never be a museum piece, for it cannot be singularly owned.

Though it can not be bought, everyone of us can own a part of it.

Let me tell you what little I know about this gem.

The history of its presence in Genesee County goes back to 1939 when wives of physicians organized to form the Genesee County Medical Auxiliary. The purpose of the Auxiliary was to support and enhance of the Genesee Medical Society. In concert with other parallel organizations they joined the fledgling state and national organizations whose purposes were similar enlarging the voice of organized medicine both nationally and regionally.

A few years ago, this Auxiliary was renamed and is now our Genesee County Medical Alliance! This is what I am enthusiastic about. This is what I want to expose. It truly is a gem and needs to be recognized for what it is, a dynamic force in our midst and by our side.

The July issue of the Genesee County Bulletin was dedicated to the Alliance, as it has been for as many years as I can remember because the Alliance forms much of the mortar that brings us together. It is in concert with the Alliance that we celebrate the Annual Presidents' Ball (this year on Nov. 9). It was the Alliance that spearheaded the recent Talent Night. They organized the Sunday afternoon picnic in August and when there are legislative initiatives they are on the phone with us.

Members of the Alliance do all sorts of things in the community. The most visible, perhaps is the annual Healing Hands Run/Walk, held each year in May, raising

over \$100,000 for the Genesee County Free Medical Clinic. And they have done it for over a decade. The annual Peace March, "Hands Are Not For Hitting" an anti-bullying campaign taken into the grade schools, "Reach Out and Read" a preschool literacy program are just a few of the initiatives.

The Alliance has supported nursing scholarships and encouraged high school girls to consider nursing through their hospital volunteer program.

Perhaps most importantly they stand beside us as a very dynamic force in the legislative process. Our legislators know many of them on a first-name basis. The Genesee County Medical Society Alliance is legendary and rightfully so.

Furthermore, the relationship between the GCMS and GCMSA is extraordinary. Let me tell you how I came to find that out.

Several years ago I volunteered, as a member of our Alliance, to be the Membership Chair. In that capacity I went to the Annual Meeting of AMAA in Chicago. During those two days I had the opportunity to sit in on several sessions dealing with Alliance Membership. I listened for some time, hearing complaints about how isolated and unappreciated Alliances felt. There was a lack of communication in most instances. There was a distinct and endemic lack of appreciation for what the Alliances did in the community and for the Medical Societies. I said nothing - for a while. As the only male in the group (a bit of an anomaly at that time) I was a curiosity, so I waited to speak, but finally had to.

I explained how we work together in this county. I told them that the Medical Society financially supported the work of the Alliance. I explained that annually the Alliance President was our cover picture of the July Bulletin and a large part of that issue was dedicated to the past year's work as well as the vision of the incoming President. I clued them in on how our legislative team was always included Alliance members. I informed them that we so appreciated our Alliance that the County Society's Executive Director and his secretary gave generously of their time, enthusiastically supporting the Alliance initiatives many of which are joint ventures. Almost to the person they were stunned. Jealous? Yes. But also inspired to see that it could be done.

The Genesee County Gem is Our Alliance. And you can own a piece of it by joining the Alliance. More than 20 physicians have. Each one of us can strengthen the work and voice of the Genesee County Medical Alliance by paying the County Membership Dues of a whopping \$20. And if your spouse is not a member pay their \$20. The Alliance is a strong factor in our society. Help make them stronger in numbers and finance by your support.

“As physicians, we have so many unknowns coming our way...

One thing I am certain about is my malpractice protection.”

Medicine is feeling the effects of regulatory and legislative changes, increasing risk, and profitability demands—all contributing to an atmosphere of uncertainty and lack of control.

What we do control as physicians:
our choice of a liability partner.

I selected ProAssurance because they stand behind my good medicine and understand my business decisions. In spite of the maelstrom of change, I am protected, respected, and heard.

I believe in fair treatment—and I get it.



PROASSURANCE
Treated Fairly



Professional Liability Insurance & Risk Management Services

ProAssurance Group is rated **A+ (Superior)** by A.M. Best.
ProAssurance.com • 800.292.1036

A woman with short blonde hair is performing on a stage. She is wearing a black dress with a large blue and green floral design. She is holding a microphone in her right hand and has her eyes closed, appearing to be singing or speaking. The background shows a stage setting with a wooden podium on the left and a white table on the right. The text 'GCMS & GCMSA MEMBERS WOW AT ART AND TALENT SHOW' is overlaid on the right side of the image in a bold, white, sans-serif font with a blue outline.

**GCMS &
GCMSA
MEMBERS
WOW AT
ART AND
TALENT
SHOW**



On Sept. 6 the Genesee County Medical Society and Genesee County Medical Society Alliance produced an art and talent show to the joy of those assembled to watch and to participate in the event. It was an opportunity for artists, poets, authors, singers, dancers, musicians, movie producers and great sponsors as well as an audience to have a totally uninhibited evening outside of the norms of the medical world.

The evening was sponsored by Swartz Ambulance and Medical Transportation, Renue Physical Therapy, and Hurley Medical Center.

The hostess for the talent and art show was the effervescent Sue Lauber.

Paintings by Dr. Mona Kiran, handmade jewelry by Lori Burton, necklaces by Peter Levine, photographs by Susan Piper, handmade items by Samira Rao, sculptures by Dr. Edgardo Paguio, paintings by Dan Lauber, shirts

and crafts by Nakhil and Deven Mukkamala, Dr. Vivek Palavali's paintings films and books, Nellis Agabigum's jewelry and the "Commit to Fit" program were featured in the early part of the evening. The sense of wonder experienced by the browsers was palpable. It was not unusual to see Alliance members, doctors and their children, and friends, as well as the wait staff, staring in wonder at the marvelous creativity of those who displayed their arts and crafts.

The dinner featuring crab stuffed fish and vegetarian delights, as well as peppered chicken, played to rave reviews. It was followed by remarkable performances. Ruqsana Ahmed sang beautiful Bengali tunes. Andamo Goins and Jeanette Rivera danced beautifully to sensual rhythms. Dr. Sara Pendleton played a wonderful piano solo, followed by a dance number in which she played the accordion and her daughter,

Talitha, danced. Dr. Dan Ryan sang two wonderful songs accompanied by his complicated guitar accompaniments. Arun Nagpal, son of Sunil and Sumita Nagpal, sang a lovely song from Les Miserables, accompanied by Dr. Quincy Dobbs on piano. Dr. and Mrs. Sam Dismond provided an exhibition of ballroom dancing, accompanied by Dr. Dismond's beautiful singing voice. Jane Thoms, daughter-in-law of Peter and Cheryl Thoms, sang a lovely hymn. As a final touch, Rosa Wang, Diane Morris, Beth Schumacher, Dr. Barbara Adams, Marilou Mathias, Marianne Almeida, Raksana Ahmed, Dr. Peter Thoms and Dr. Alan Turcke sang a sweet rendition of "Let There Be Peace on Earth."

Attendees stayed and enjoyed the art displays for a long time after the event ended. Those who did not attend really missed a great evening.

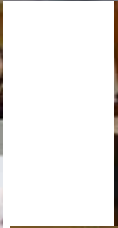


Art and Talent Show



Bull with
long hair
(stone and bone)









Art and Talent Show



Art and Talent Show





DINNER BUSINESS MEETING

September 6, 2013

Minutes

I. Call to Order.

The meeting was called to order at 7 p.m. in the ballroom of Genesys Conference Center by Raymond Rudoni, M.D., President. Dr. Rudoni welcomed everyone to an evening of fun, preceded by a brief dinner business meeting.

II. Welcome.

Dr. Rudoni introduced the sponsors for the evening, including Hurley Medical Center, Renue Physical Therapy, and Swartz Ambulance and Medical Transportation. He thanked them and invited representatives of each sponsor to the podium to speak.

III. Review of Minutes:

Motion: That the minutes of the May dinner business meeting be approved as published in *The Bulletin*.

The Motion Carried.

IV. Nomination of officers:

Motion: That the slate of officers presented by the Genesee County Medical Society Nominating Committee be approved as presented.

PRESIDENT-ELECT: Debra Duncan, MD

SECRETARY: Qazi Azher, MD

TREASURER: Edward Christy, MD

DELEGATES:

| | |
|--------------------|-----------------------|
| Shafi Ahmed, MD | Laura Carravallah, MD |
| Mona Hardas, MD | Paul Lazar, MD |
| Raymond Rudoni, MD | Tarik Wasfie, MD |
| Gerald Natzke, DO | |

ALTERNATE DELEGATES:

| | | |
|-------------------------|-----------------------|-------------------|
| Athar Baij, MD | Niketa Dani, MD | Andrew Duda, MD |
| Asif Ishaque, MD | F. Michael Jaggi, DO | Rima Jibaly, MD |
| Farhan Khan, MD | S. Kiran, MD | Nita Kulkarni, MD |
| Brenda Rogers-Grays, MD | Robert Soderstrom, MD | Peter Thoms, MD |
| Venu Vadlamudi, MD | Amanda Winston, MD | |

FINANCE COMMITTEE:

| | | |
|--------------------|-----------------------|-----------------|
| Deborah Duncan, MD | Lawrence Reynolds, MD | John Waters, MD |
|--------------------|-----------------------|-----------------|

INTERNATIONAL MEDICAL GRADUATES DELEGATION:

| | | |
|-----------------------|---------------------|-----------------------|
| Shafi Ahmed, MD | Ayman Haidar, MD | Sayed Osama, MD |
| Abd Alghanem, MD | Mona Hardas, MD | George Predeteanu, MD |
| Sara Ali, MD | Asif Ishaque, MD | Venkat Rao, MD |
| Qazi Azher, MD | Rima Jibaly, MD | Jagdish Shah, MD |
| Amitabha Banerjee, MD | Sunil Kaushal, MD | Jawad Shah, MD |
| Rao Botta, MD | S. Kiran, MD | Hemant Thawani, MD |
| Edward Christy, MD | Sreen Mannam, MD | Tarik Wasfie, MD |
| Hytham Fadl, MD | Sania Zainuddin, MD | Hesham Gayar, MD |
| Vijay Naraparaju, MD | | |

YOUNG PHYSICIANS SECTION:

Nateen Mahotra, MD - Delegate A.J. Srivastava, MD - Alternate delegate

PRESIDENTIAL CITATION FOR LIFETIME COMMUNITY SERVICE:

Anjali Misra, MD
President for a Day: Amitabha Banerjee, MD
MSMS Community Service Award: Mohamed Saleem, MD
The Motion Carried.

V. Update on Medicaid passage and scope of practice.

Dr. Rudoni noted that Medicaid expansion has passed the senate and is awaiting house approval. This was done with considerable effort by MSMS and GCMS members and staff. He invited those assembled to tell nonmembers that we are fighting on their behalf every day. He noted that developments will be upcoming soon on Medicaid and the Affordable Care Act.

VI. Introduction of Talent Show

Committee. Dr. Rudoni introduced the committee which put on this evening's art and talent show, Carol Hassan, Beth Schumacher, Sue Lauber, Dr. Alan Turcke, Cheryl Thoms (chair) and Pete Levine. He noted the spectacular job and hard work that they have put in to bring this fun evening to fruition.

VII. Adjournment.

No further business appearing, the meeting was adjourned at 7:25 p.m.

Helping over 10,000 Doctors
get a good night rest.

Are you one of them?

SCW Agency Group, Inc.
Insurance Across America

for a free quote
call 800.968.4929
or visit
www.scwinc.com

Dear Readers,

The Editorial Board of the Bulletin would like to provide you with the final installment of the material developed by the Greater Flint Health Coalition showing the data trends and projected community health issues for Genesee County. The data is amassed from myriad local, state and national sources and is a first rate compendium. In the August issue we provided several charts on Major Health Status Trends. This month we will provide concluding materials. Thanks for your attention to this vital data.

Daniel Ryan, MD, Editor



GFHC Community Data Scorecard

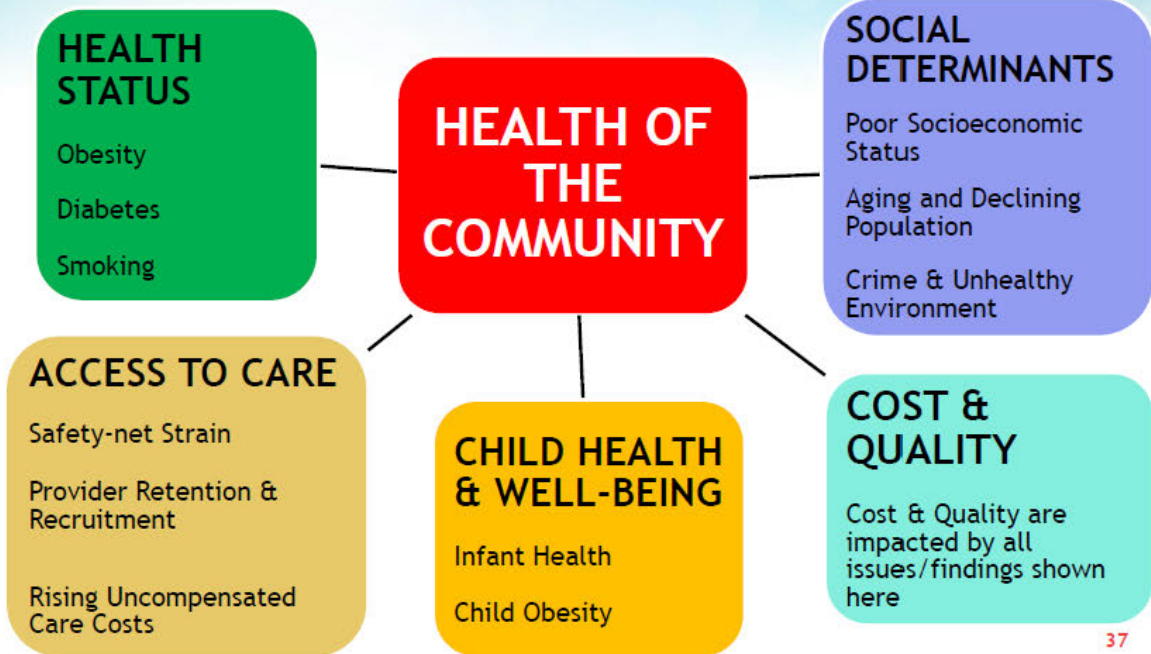
Summary & Discussion:

Data Trends Related to Current Activities & Areas of Opportunity

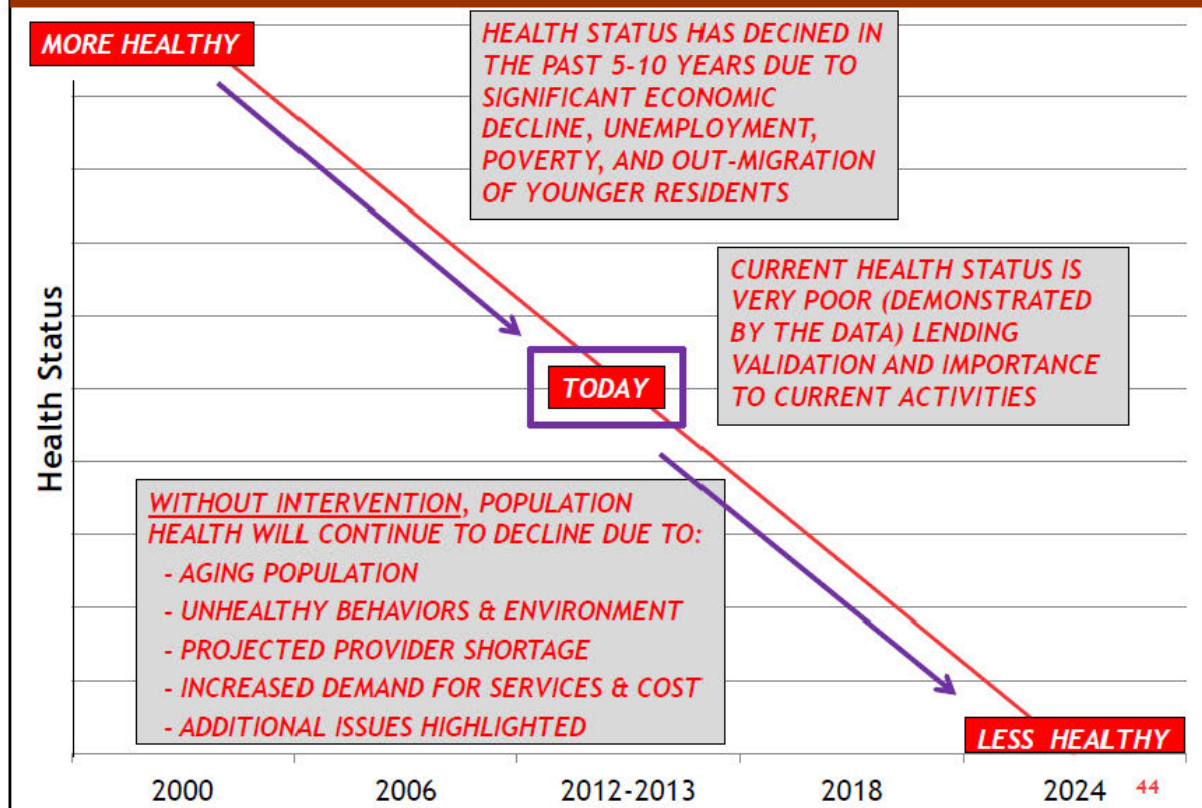
GREATER
Flint
HEALTH
COALITION

35

Through review and analysis of the Data Review Subcommittee, it is concluded that the 2013 findings are similar to prior data and validate current GFHC activities...



Projected Trends – Where We’re Headed





Trails for Kids Program

Trails for Kids Program

The St. Baldrick's Foundation awarded Hurley \$50,000 for its "Trails for Kids Program." This grant enables Dr. Susumu Inoue to increase clinical trial access for pediatric oncology patients challenged by distance from Hurley. Hurley's pediatric oncology program treats children with leukemia or cancer without necessitating travel to Detroit or Ann Arbor.

Hurley Medical Center's expertise in treating childhood cancer is exemplified through its status as an approved institution of Children's Oncology Group (COG)—the International Multi-institutional clinical trial group for all pediatric malignancies including leukemia. As an approved COG institution, Hurley has to treat at least 12 new patients every year. Leukemia in teenagers and young adults, when treated with a pediatric research protocol, is more curable than when treated with regimens of chemotherapy made for adults. Clinical research studies often use cutting-edge drugs that are not commercially available and show promising results. These drugs are available free-of-charge for patients who are registered on study protocols.

Outreach with primary care physicians in low participation areas is utilized to increase recruitment. Valerie Southall of Hurley Physician Services works to bring more awareness of the pediatric oncology services available at Hurley to medical practices located in Michigan's Thumb and areas north of the I-69 corridor. Outreach has also enabled Hurley to offer CME programs for Port Huron hospital. Sponsorship support for the Genesee County Medical Society's dinner/business meeting and advertising in its bulletin for one year will also increase local awareness of clinical trials available at Hurley for pediatric oncology patients. The grant runs through June 30, 2014.

HURLEY MEDICAL CENTER PEDIATRIC ONCOLOGY UNIT

Coordinated Care, Close to Home

KH was a 12-year-old girl living in Ontario, Canada with her father. Her parents were divorced and her mother moved to Pinconning, Michigan. KH was diagnosed with cerebellar Medulloblastoma in 2011. She received her brain radiation at Victoria Children's Hospital and needed to start chemotherapy. It was agreed that her mother in Michigan could provide the most supportive care throughout her treatment so KH moved to Pinconning. She was registered on the Children's Oncology Group (COG) Protocol and that is how she came to be treated at Hurley Medical Center and counseled periodically by a child psychologist. KH received the same level of quality care much closer to her new home.

hurleychildrens.com

HURLEY CHILDREN'S HOSPITAL

Children's Miracle Network Hospitals



Buckham Alley Festival Floods Downtown

For those of you who missed it, The Buckham Alley Festival was a joy to behold. Anyone who spends time in Manhattan during the summer knows there are block festivals in commercial districts every week. The Buckham Alley Festival was as good as any of those. Thousands of people circulated, listening to music, eating food and enjoying art in a fun family-friendly environment.

It was so pleasing to see the downtown area bustling and happy. Families with their dogs, children, grandmothers, grandfathers and even street folks, all interacting and having a blast. This could have been any of her great cities, but it was Flint. Keep your eyes open for this and other events in downtown Flint. Enjoy them.



Medical Society Foundation

Consider a donation to the Medical Society Foundation for all of your holiday giving. What a wonderful way of expressing your holiday sentiments while supporting important health related causes.

The Medical Society Foundation has been coordinating physician giving in Genesee County since 1987. This holiday season, why not use the Foundation to make sure your gifts to family, friends and colleagues help to improve the health and well-being of our community.

By giving to the Medical Society Foundation, you receive a great year-end tax benefit at the same time that you tell others how much their health – and the health of those who are most vulnerable in our community – really means to you.

In the past, the Medical Society Foundation funds have been used to support specific public television programs, support of HIV programs, Reach Out and Read, Michigan State Medical Society Alliance, continuing medical education programs, Greater Flint Health Coalition, Turkish Red Crescent Society, Orissa Relief Fund, Sloan Museum's health exhibits, The Genesee County Free Medical Clinic and the Richard A. Rapport Memorial Conference Room.

Contributions can also be made in memory
of an individual or to honor someone.

If you want to designate your gift(s) to a special cause, please indicate your choice on your check. A holiday card will be sent to the person(s) of your choice acknowledging your gift. (We will deduct only 10% from the amount of your check to cover expenses).

Mail your donations to: **Medical Society Foundation**
4438 Oak Bridge Drive, Suite B
Flint, MI 48532-5467

For questions or information on how your gift can help support the charitable activities of your Medical Society Foundation contact Peter A. Levine, MPH at (810) 733-9925 or at plevine@gcms.org.

Medical Society Foundation Mission Statement: The Medical Society Foundation is organized and does operate for the purpose of supporting continuing medical education and health-related charitable activities that further the cause of medicine.

The Genesee County Medical Society
and the Genesee County Medical Society Alliance
Cordially invite you to the

PRESIDENTS' BALL

**SOPRANOS
STYLE**

**SATURDAY
11.09.13**

WARWICK HILLS GOLF AND COUNTRY CLUB
G-9057 S Saginaw Rd
Grand Blanc Township, MI 48439

6:00 PM Cocktail Hour
7:30 PM Dinner followed by Entertainment

Valet parking available | Black tie optional
\$85 per ticket | Cash bar

RSVP Friday, October 25, 2013 to Becky Doty at
bdoty@gcms.org or (810) 733-9923



Meeting the health needs of Genesee County's children

Child & Adolescent Psychiatry (810) 768-7561

- Medication Management
- Psychiatric Consultation
- Behavioral Health Counseling, Screening, Support Groups
- Prevention Activities

Child & Adolescent Health (810) 237-7572

- Pediatrics
- School-Based Clinics
- Audiology
- Nutrition Education
- Teen Wellness Center

Child & Adolescent Dentistry (810) 768-7583

- Dental Exams & Preventive Care
- Dental Treatment & Restorations
- School Screening and Sealant Program
- Infant & Toddler Oral Health Care

Services provided at no cost to low income families

Mott Children's Health Center

806 Tuuri Place • Flint, Michigan 48503 • (810) 767-5750 • fax (810) 768-7511 • www.mottchc.org

Genesee County Medical Society Board of Directors Meeting

August 27, 2013 - MINUTES

Khalid Ahmed, MD
*Shafi Ahmed, MD
*Qazi Azher, MD
* Amitabha Banerjee, MD
Jagdish Bhagat, MD
* Cathy Blight, MD
Laura Carravallah, MD
* Edward Christy, MD
Pino Colone, MD
*Niketa Dani, MD
*Deborah Duncan, MD
*Hesham Gayar, MD
*Mona Hardas, MD
*John Hebert, III, MD
F. Michael Jaggi, DO
*Rima Jibaly, MD
*Gary Johnson, MD
* Farhan Khan, MD

Samasandrapalya Kiran, MD
*Nita Kulkarni, MD
* Paul Lazar, MD
Sreenivas Mannam, MD
AppaRao Mukkamala, MD
*S. Bobby Mukkamala, MD
*Gerald Natzke, Jr., DO
Venkat Rao, MD
Lawrence Reynolds, MD
Brenda Rogers-Grays, DO
*Raymond Rudoni, MD
Dan Ryan, MD
Jagdish Shah, MD
Jawad Shah, MD
*Robert Soderstrom, MD
Kenneth Steibel, MD
Peter Thoms, MD
Venu Vadlamudi, MD

*Tarik Wasfie, MD
*John Waters, MD

Guests & Staff:

* Bonita Wang, DO
*Jonathan Hartman – CC&G
*Peter Levine, Staff
*Nick Bendall, Staff
Daniel Gutteridge, MD-Resident
Amanda Winston - Resident
*Ruqsana Ahmed – GCMSA
*Nayba Sattar
* Dawn Hiller
*Krista Zvach

**In attendance*

I. Call to Order:

The meeting was called to order at 6 pm in the Rapport Conference Room by Raymond Rudoni, M.D., President

II. Introduction of Guests:

Dr. Rudoni introduced Nayab Sattar, a recently graduated MPH student interested in health care issues in the Greater Flint area, Krista Svach and Dawn Hiller from Hurley Health and Fitness Center, Ruqsana Ahmed, co-president of the Genesee County Medical Society Alliance, and Nick Bendall from the “Commit to Fit” program and the GCMS staff.

II. Review of Minutes:

Motion: That the Board of Directors meeting minutes of June 25, 2013 be approved as presented.

The Motion Carried.

III. Reports:

A). Alliance Report:

Ruqsana Ahmed Co-President of the GCMSA reported that the GCMS Alliance picnic was held on August 18. The turnout was small but those who attended had a very good time. The international luncheon will be held on September 27 at the home of Drs. Kiran and Hardas. The talent show will be held on September 6 and the ball on November 9.

B) Finance Committee Report:

Budget-to-Actual report for the period ending July 31, 2013.

Motion: That the Budget-to-Actual report for the period ending July 31, 2013, be approved as presented.

The Motion Carried.

Dr. John Waters reported that the Finance Committee is working with staff on procuring a long term lease with PPI, the answering service. It will involve significant leasehold improvements to accommodate the PPI HIPAA needs.

Dr. Waters reported that the \$100 membership management fees have arrived in moderate numbers. A report will be brought to the board next month so that the board can evaluate its own participation in the process.

C) Membership:

Drs. Bobby Mukkamala and Amitabha Banerjee reviewed a memo sent to the Board of Directors earlier in the month soliciting their participation in recruiting and retaining members. They noted that the committee and staff, both from MSMS and GCMS, have been working very hard with some success on membership, but we are losing ground. They also noted that a letter has been received from MSMS, indicating that unless GCMS recruits 49 more individuals, we are in danger of losing the second Board of Directors seat.

Motion: That the October Board of Directors meeting be completed dedicated to the membership recruitment and retention issue.

Directive: Staff was directed to bring back a list of dropped members (updated to current levels) along with the email to board members soliciting participation in recruiting, as well as up to date MSMS trends data, to the October board meeting

Directive: The board was directed to communicate directly with staff regarding what data needs they might have for its discussion.

Directive: Staff was directed to invite Josh Richmond from the membership department to attend the October Board of Directors meeting.

Consensus: That a list of accomplishments along with dollar figures that represent the accomplishments be developed in conjunction with MSMS.

D) Legislative Update:

Dr. Cathy Blight reported on the situation of Medicaid expansion which was expected to be voted on by the senate later in the evening. She also reported on pending scope-of-practice legislation and the fact that Phil Phelps won the Democrat primary for the 49th state house district and is the highly likely winner of the 49th State House district race in November.

E) Community and Environmental Health Committee Report:

Dr. Gerald Natzke reported that the committee will be meeting on Wednesday, August 28. He proposed bringing up the genetically modified organisms issue again.

Directive: Staff was directed to forward GMO related material from Dr. Natzke to the board in preparation for the next meeting.

Consensus: That Dr. Natzke be invited to provide an educational piece for the Board of Directors.

Continued.

F) Greater Flint Health Coalition Update:

On behalf of Dr. Laura Carravallah, Pete Levine presented the advanced care planning consensus document from the Health Coalition. This will become the advanced care planning document which facilitators will be using with members of the public for the purpose of generating material for medical records relating to end-of-life issues. It was explained that this is a draft document which will be used during the pilot phase and may be changed over time. There was no concern expressed about the content of the document.

Peter Levine reported that the Quality Innovation Task Force will begin meeting in the next couple of months. The issue of a children's health access project was deferred until next month

G) District Director's Report:

Drs. Mukkamala and Waters reported on the MSMS Midsummer Board meeting at which the Board updated its strategic plan. They also noted that MSMS membership is slightly down.

H) President's Report:

Dr. Rudoni reminded everyone that the talent show will be held on September 6 at the Genesys Conference Center. The Board was updated on the ball, scheduled for November 9 at Warwick Hills Country Club. Levine noted that sponsorship responses are coming in more slowly.

Dr. Rudoni also reported on an article from M-Live about Flint being very highly rated as a place for physicians to come and practice. He and Dr. Mukkamala were interviewed for the article.

IV. New Business:

1. Problems with caring for the deaf.

Beth Schumacher and Feroza Raffee did not attend the meeting.

Directive: Staff was directed to defer the issue of problems with caring for the deaf for next month's agenda

2. AMA diabetic education program in Flint.

Dr. Nita Kulkarni introduced Krista Zvach and Dawn Hiller from Hurley Health and Fitness Center, explaining that Hurley Health and Fitness Center has received funding to participate in an AMA initiated national diabetes prevention program. It provides nutrition counseling and prevention counseling, free of charge, to anyone referred by a physician to the Hurley Health and Fitness program.

Directive: Staff was directed to forward information regarding the diabetes prevention program to board members and to publish information about it in The Bulletin.

3. Mental Health and Substance Abuse Task Force of the Greater Flint Health Coalition's statement on marijuana use. The Board reviewed a document developed by the Health Coalition relating to marijuana health risks.

Consensus: That no position be taken on the document developed by the Mental Health and Substance Abuse Task Force of the Greater Flint Health Coalition on marijuana.

V. Adjournment:

No further business appearing, the meeting was adjourned at 7:20 p.m. with the next meeting planned for September 24, 2013.

WHERE DOES THE MONEY GO?

- The Fund for Better Health provides grants to support community - based public health service projects in areas such as substance abuse prevention, violence prevention and healthy lifestyles.
- The Development Fund is an unrestricted fund that allows the AMA Foundation to respond quickly to issues as they arise or provide support in areas of greatest need.
- The Scholars Fund distributes approximately \$500,000 annually in tuition assistance to medical students across the country. Gifts to this fund can be designated to specific U.S. medical schools.

GENESEE COUNTY MEDICAL SOCIETY ALLIANCE

• AMA Foundation Holiday Greeting 2013 •

Contributor(s) _____

Amount of Contribution \$ _____

Address _____

DESIGNATED FUND:

Scholars Fund _____

(Medical School Name, City, State)

Fund for Better Health _____

Development Fund _____

Mail your completed form, along with check payable to The AMA Foundation,
to Kee Ja Kang, 8511 Hidden Forest Court, Grand Blanc, MI 48439.

For questions or more information, please call Kee at (810) 603-1020.

YOUR \$\$\$ AT WORK

- S** GCMS CONTINUED TO PROVIDE STAFFING TO THE GOVERNORS 4 X 4 FITNESS PROGRAM
- S** GCMS STAFF CONTINUED TO SERVE AS HOST TO THE GENESEE COUNTY HUMAN TRAFFICKING TASK FORCE
- S** GCMS attracted seven new members
- S** GCMS continued working with MSMS to achieve passage of Medicaid expansion
- S** GCMS continued work with MSMS opposing scope of practice expansion
- S** GCMS provided updates to practice managers on ICD 10, what's new with Blue Cross and Blue care network, and a session on the future of Blue Cross and Health plus as it relates to the affordable care act
- S** GCMS staff continues to meet with practices in need of advice and relationship building with other entities
- S** GCMS And GcMSA held an art and talent show which was enjoyed by all

GCMS MEETINGS

– OCTOBER 2013 –

10/7– 8 a.m. Legislative Liaison Committee @ GCMS

10/2 – 7:30 a.m. Bulletin Committee @ GCMS

10/22 – 5:15 p.m. Finance Committee @ GCMS

10/22 – 6 p.m. GCMS Board of Directors @ GCMS

10/23 – 12:30 p.m. Community & Environmental Health Committee @ GCMS

10/24 – 8 a.m. Practice Managers @ GCMS

SAVE THE DATE!
Presidents' Ball
11/9/13

DR. LEONID RADCHENKO HAS PASSED AWAY

Dr. Radchenko died on September 11, 2013. Leonid was born in Serbia in 1923. His parents were Russians who had emigrated to Serbia after the Russian Revolution. Leonid was raised by his father. Although they were extremely poor, Leonid's father made sure that he was well educated. Leonid entered the University at Belgrade, but the war interrupted his studies. He fought the Nazis in the Serbian Army. After the war he returned to Belgrade to finish his medical studies. There he met and quickly married Helen, who was also a medical student. They were inseparable thereafter. Leonid and Helen both practiced medicine in Serbia, but they did not wish to live under communism. They emigrated and spent a year in a refugee camp in Trieste, Italy. They chose to move to Brazil, although neither spoke Portuguese, because there they would be able to study to resume the practice of medicine. In Brazil, Leonid and Helen both became certified as physicians and practiced medicine. They became Brazilian citizens and lived there for 13 years. Although they were happy in Brazil, Leonid always wished to live in the United States. In 1963, they were offered the opportunity to immigrate. Leonid and Helen moved to Flint and again began the process of becoming certified to practice medicine. They both resumed the practice of medicine and became citizens as soon as possible. They lived happily together in Flint until Helen's death in 2010. Leonid Radchenko was an accomplished, intelligent and thoughtful man. He spoke many languages and was well read in many subjects. He was always willing to share his rich life experiences and was a loyal friend. Those who wish to honor Leonid and Helen Radchenko may make contributions to charity in their memory.

TRUST EXPERIENCE.
COUNT ON COMMITMENT.



**Corporate | Business Law | Real Estate
Wills & Trust | Probate | Family Law
Licensing | Litigation | Mediation
Personal Injury | Criminal Defense
Malpractice**

Walter P. Griffin | Timothy H. Knecht | Jose' T. Brown
J. Brian MacDonald | Jonathan M. Hartman | Glenn M. Simmington
R. Paul Vance | Barbara J. Hunyady

Attorneys at Law | Since 1928 | www.ccglawyers.com

HAPPY BIRTHDAY DOCTOR

OCTOBER

| | | | | | |
|----------------------|----|--------------------|----|-----------------------|----|
| Eleuterio Lumaque Jr | 1 | Behrouz Moghtassed | 10 | S Peter Almeida | 19 |
| Walter Barkey | 2 | Lee Perry | 10 | Musa Haffajee | 19 |
| Mohammad Amin | 2 | Kavita Rajkotia | 11 | Wayne Kinning | 19 |
| George Predeteanu | 4 | David Barbour | 11 | Richard Lundeen | 20 |
| Bhargavi Raiji | 4 | Robert Weber | 11 | Vernon Urich | 20 |
| Randolph Schumacher | 4 | John Lusk | 12 | Allan Ebert | 20 |
| Miguel Perez-Pascual | 5 | Prajesh Patel | 12 | Giovanni | |
| Lewis Twigg | 5 | Jerome Kasle | 13 | Digiannantonio | 21 |
| Alicia Alimboyoguen | 6 | Hemant Thawani | 13 | Alex Solik | 21 |
| William Macksood | 6 | Jeanne Hicks | 14 | Walter Cukrowski | 22 |
| Anthony Parillo | 6 | Berton Mathias | 14 | Duane Bailey | 23 |
| Sandra Shortt | 6 | Naraharisetty Rao | 14 | Billie Lewis | 24 |
| Ahmed Arif | 7 | Amitabha Banerjee | 15 | Hugh Grover | 24 |
| Donald Hardman | 7 | Tai Kang | 15 | Melodie Knicely | 24 |
| James Wagner | 7 | Krishna Shah | 15 | Robert Yochim | 26 |
| Jack Price | 8 | Dirk Snyder | 15 | Edgardo Balde | 27 |
| Afroze Hai | 8 | John Dobson | 16 | Vincente Carino | 27 |
| Jack Nettleton | 9 | Sunil Kaushal | 16 | Christopher Conlin | 27 |
| Abdul Hassan | 10 | Mohammed Syed | 16 | Christopher Cukrowski | 28 |
| Prasad Kommareddi | 10 | Burhan Tajour | 16 | Kevin Gaffney | 29 |
| Chandulal Malde | 10 | Frederick Bruening | 18 | Daniel Ryan | 29 |

CLASSIFIEDS

OFFICE SPACE AVAILABLE

Small office located by front door of Genesee County Medical Society suite. Great exposure for businesses seeking visibility with physicians. Conference room availability possible. Office size 100 sq. ft. at \$12 per sq. ft. triple-net. Additional office space available. Contact Pete Levine at (810) 733-9925 for details.

PHYSICIANS NEEDED

at the Emergency Medical Center of Flint Various shifts available for part-time, as well. Must be willing to do minor stitches, infants & children, splinting, and minor eye & ear procedures. This is a classic urgent care much like family practice. Hours of operation 9:30am – 9pm, 7 days a week, closed on major holidays Located at 2284 S. Ballenger Hwy., Suite 2, Flint, 48503. Contact Pete Levine at 810-733-9925.

If you or someone you know would like to advertise in *The Bulletin* please contact Becky Doty at bdoty@gcms.org or (810) 733-9923.



**SAVE THE
DATE
FOR 2013**

**PRESIDENTS'
BALL ON
NOVEMBER 9**



**MICHIGAN STATE
MEDICAL SOCIETY**
120 W. Saginaw, Lansing, MI 48823
msms@msms.org • www.msms.org
517-336-5762

**State and County Medical Society
Membership Application**

**GENESEE COUNTY
MEDICAL SOCIETY**
4438 Oak Bridge Dr., Suite B
Flint, MI 48532
810-733-9923



Please PRINT or TYPE

FULL NAME _____ MD or DO (Circle One)
Last First Middle Initial

HOME ADDRESS, CITY & ZIP _____
Area Code & Telephone Number

OFFICE ADDRESS, CITY & ZIP _____
Area Code & Telephone Number

PRACTICE NAME _____
Office Fax Number

EMAIL ADDRESS _____ For mailing, please use (check one): Office address Home address

BIOGRAPHICAL DATA Sex: Male Female Birth Place _____ Date of Birth _____
Month Day Year

Maiden Name _____ Spouse's Name _____

Languages Spoken _____

Government Service (check one): Military National Health Service Beginning Date _____ Completion Date _____

EDUCATION (please complete or attach CV)

| INSTITUTION | LOCATION | DEGREE | YEAR GRADUATED | |
|--------------------------|----------|--------|----------------|--------|
| | | | Beginning | Ending |
| College/University _____ | _____ | _____ | _____ | _____ |
| Medical School _____ | _____ | _____ | _____ | _____ |

| INTERNSHIP, RESIDENCY, AND FELLOWSHIPS | SPECIALTY | COMPLETION DATE |
|--|-----------|-----------------|
| _____ | _____ | _____ |
| _____ | _____ | _____ |

License: MI # _____ Date Issued _____ ECFMG # _____

License held in other states/countries (list states or countries) _____

PROFESSIONAL DATA

Present Type of Practice (check appropriately):

OFFICE BASED: Solo Hospital Based Teaching Research Government
 Group Practice Name _____ Other (specify) _____

Specialty(ies) _____

Board Certifications (list specialties & dates) _____

Present Hospital Appointments (list dates) _____

Practice History _____

Previous Medical Society Membership (list dates) _____

Specialty Society Memberships _____

Within the last five years, have you been convicted of a felony crime?..... Yes No If YES, please provide full information.

Within the last five years, has your license to practice medicine in any jurisdiction been limited, suspended or revoked?..... Yes No If YES, please provide full information.

Within the last five years, have you been the subject of any disciplinary action by any medical society or hospital staff?..... Yes No If YES, please provide full information.

I agree to support the GENESEE COUNTY MEDICAL SOCIETY Constitution and Bylaws, the MICHIGAN STATE MEDICAL SOCIETY Constitution and Bylaws, and the Principles of Ethics of the American Medical Association as applied by the AMA and the MSMS Judicial Commission.

Signature _____ Date _____

WHEN COMPLETED, please mail to MSMS or Genesee County Medical Society, or FAX to 517-336-5797. THANK YOU!

