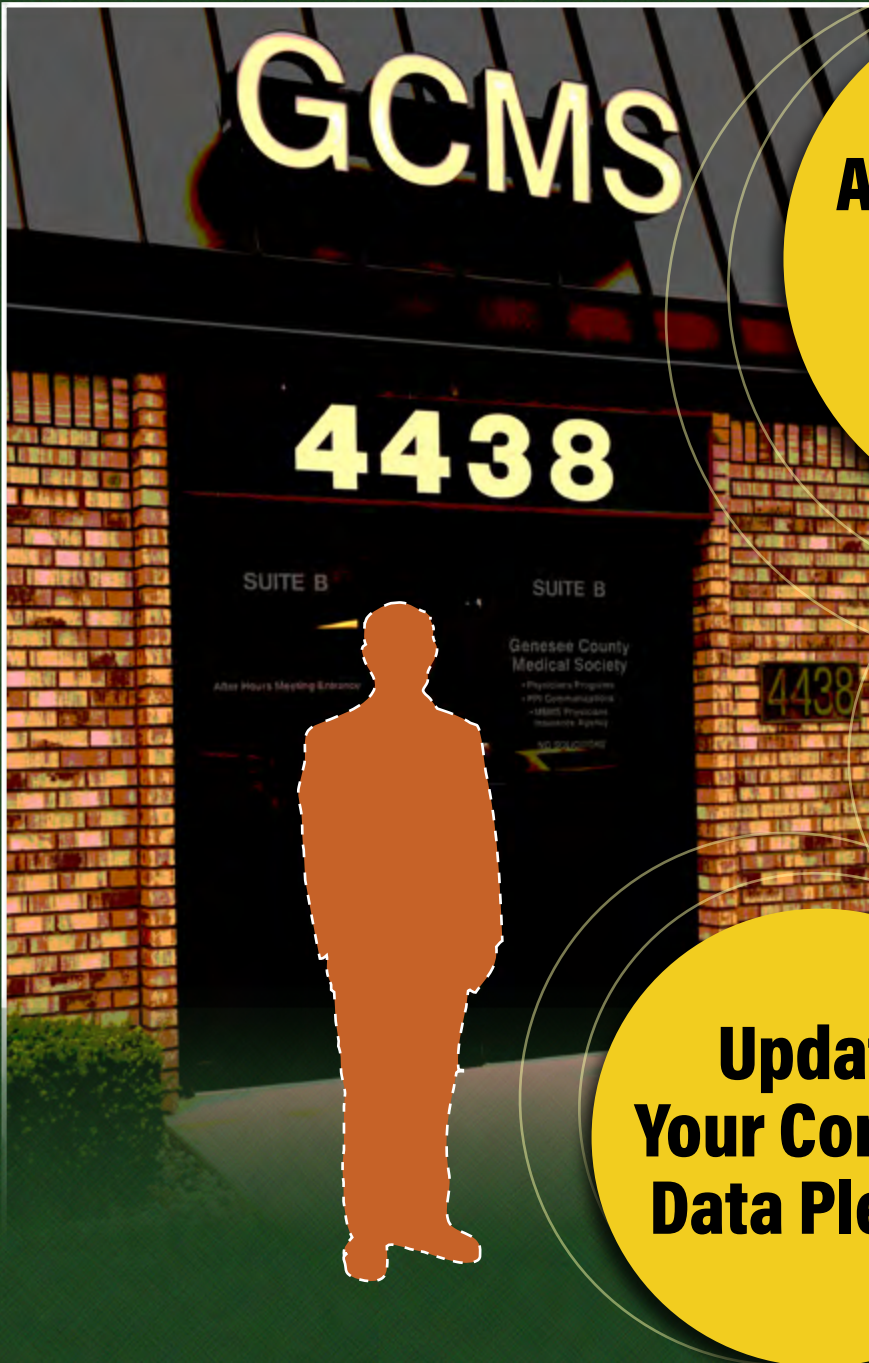


THE Bulletin

February 2017 Volume 112, Number 34



**Attend February
2nd MACRA
Meeting!**

**Join a
GCMS
Committee**

**Update
Your Contact
Data Please**

GENESEEE COUNTY MEDICAL SOCIETY
Organized Medicine's Leading Edge

FEBRUARY IS HEART DISEASE AWARENESS MONTH

Are your patients taking care of their hearts?

CT Coronary Calcium Scoring



Help your patients take advantage of our special *February discount price* of **\$79** out-of-pocket (**normally \$99**).

Who should get a CT Coronary Calcium Score?

Males 35-70 years of age or females 40-70 years of age with one or more of these risk factors:

- Family History of Heart Disease
- High Cholesterol
- Smoking
- High Blood Pressure
- Overweight
- Diabetes

A heart calcium scoring test is a simple, noninvasive test that can assess the health of your heart and may identify coronary artery disease in its early stages.

This is a low-dose procedure with a minimal table time of just 10 seconds.

CPT CODE: 75571



RMI
REGIONAL MEDICAL IMAGING

rmipc.net

Genesee Area ■ (810) 732-1919



ASSOCIATE EDITOR

Peter S. Thoms, MD

GCMS OFFICERS 2016-17

President – John Hebert, III, MD
President Elect – Gerald Natzke, Jr, DO
Immed. Past Pres. – Pino Colone, MD
Secretary – Qazi Azher, MD
Treasurer – Ed Christy, MD

MSMS OFFICERS 2015-16

Chair – S. Bobby Mukkamala, MD
Speaker – Pino Colone, MD
Treasurer – John Waters, MD

DELEGATES

Shafi Ahmed, MD
Qazi Azher, MD
Amitabha Banerjee, MD
Cathy Blight, MD
Laura Carravallah, MD
Edward Christy, MD
Pino Colone, MD
Niketa Dani, MD
Deborah Duncan, MD
Hesham Gayar, MD
Mona Hardas, MD
John Hebert, III, MD
Rima Jibaly, MD
Nita Kulkarni, MD
Gerald Natzke, DO
Raymond Rudoni, MD
Tarik Wasfie, MD

ALTERNATE DELEGATES

Athar Baig, MD
Michael Danic, MD
Nick Harrison
Asif Ishaque, MD
F. Michael Jaggi, MD
Sunil Kaushal, MD
Farhan Khan, MD
Rama Rao, MD
Venkat Rao, MD
Lawrence Reynolds, MD
Brenda Rogers-Grays, DO
Punam Sharman, MD
Robert Soderstrom, MD
Amanda Winston, MD

DISTRICT DIRECTORS VI

S. Bobby Mukkamala, MD
John Waters, MD

OTHER BOARD MEMBERS

Gary Johnson, MD
Michael Mueller, MD
Elmahdi Saeed, MD
James Walter, MD

Executive Director – Peter A. Levine, MPH

Executive Secretary – Sherry Smith

THE Bulletin

Read by 96% of GCMS members.

CONTENTS

| | |
|-----------------------------------|----|
| President's Message | 4 |
| Director's Message | 6 |
| Do You Recognize This Doctor? | 7 |
| Classifieds | 7 |
| GCMS Membership Benefit | 10 |
| Happy Birthday Doctor | 11 |
| Photo Gallery by Cyrus Farreh, MD | 12 |
| GCMS Meetings | 14 |
| Your \$\$\$ at Work | 16 |
| Commit to Fit | 18 |
| Board of Directors Minutes | 22 |

Cover Photo, Cyrus Farreh, MD

Our Vision

That the Genesee County Medical Society maintain its position as the premier medical society by advocating on behalf of its physician members and patients.

Our Mission

The mission of the Genesee County Medical Society is leadership, advocacy, education, and service on behalf of its members and their patients.

PLEASE NOTE

The GCMS Nominating Committee seeks input from members for nominations for the GCMS Presidential Citation for Lifetime Community Service. The Committee would like to be made aware of candidates for consideration.

THE BULLETIN

Published by the Genesee County Medical Society Publication Office

4438 Oak Bridge Drive, Suite B, Flint, Michigan 48532
Phone (810) 733-6260 Fax (810) 230-3737

By subscription \$60 per year. Member subscription included with Society dues. Contributions to

THE BULLETIN are always welcome. Forward news extracts or material of interest to the staff before the 5th of the month. All statements or comments in THE BULLETIN are the statements or opinions of the writers and are not necessarily the opinion of the Genesee County Medical Society.

This publication
designed and
edited by



www.natnaskypublishing.com (248) 547-9749

MEDICARE CUTS COUNTY HOSPITAL FUNDING

Flint is in the news again and not in a positive light. This time it is all three hospitals in the Flint area as they face funding cuts over hospital-acquired illnesses. Medicare has changed the way it pays hospitals for caring for Medicare patients. Traditionally, Medicare has paid hospitals for the services that it provided to Medicare patients. Now the Centers for Medicare & Medicaid Services (CMS), the federal agency that runs Medicare is also paying (rewarding) hospitals for providing services of higher quality and higher value.

According to the official U.S. Government Site for Medicare, provisions of the Affordable Care Act authorize Medicare to reduce payments to acute care hospitals primarily through three specific programs which link quality to payment.

The first program is the Hospital Readmission Reduction Program. This program allows Medicare to reduce payments to hospitals with excess readmissions for selected high cost or high-volume conditions and procedures. This program was designed to improve quality of care and care transitions by providing incentives for reducing hospital readmissions.

The second provision in the Affordable Care Act linking quality to payment is the Hospital Value Based Purchasing (VBP) Program. This program implemented a pay-for-performance system that accounts for the largest share of Medicare spending. Under the (VBP) Medicare adjusts payments to hospitals based on either how well they perform on each measure compared to all hospitals or how much they improve their own performance on each measure compared to their performance during a certain time period.

The third provision in the Affordable Care Act linking quality to payment is the Hospital Acquired Condition (HAC) Reduction Program. This provision of the ACA



John Hebert, MD

authorizes Medicare to reduce payment to hospitals that rank in the worst performing quartile (lowest 25%) of hospitals with respect to HAC quality measures. Hospitals in this category have their Medicare payments reduced by 1% of what they would have otherwise received for the discharge. This reduction in payment is done to encourage hospitals to improve patient safety by reducing the incidence of hospital acquired conditions.

Certainly linking quality to payment appears to be a laudable undertaking, with the goals being enhanced patient safety and quality of care. However, these decisions for

reductions in payments are based on hospital data that is not current and in fact may be more than two years old. Also, these decisions for payment reductions do not address ongoing efforts by hospitals to comply with the measures of concern noted in the three programs referenced above. Certainly the demographics of the patient populations in underserved communities can impact a hospital's ratings and even its ability to improve its ratings. It is interesting to note again that many of the hospitals facing a reduction in Medicare payments are in minority communities of low income. In addition to the Flint area hospitals there are three hospitals in the Detroit area.

The CMS website describes the payment reductions to these lowest ranked hospitals as "savings" which reflect the hundreds of millions of dollars. They are punitive to the hospitals affected and significantly affect their financial viability and consumer confidence in the care that they provide. As the Affordable Care Act is being "repealed and replaced" it is time to review those parts of it that negatively impact premier quality health care institutions that are challenged by the demographics of the communities they serve.

A Genesee County Medical Society Town Hall Meeting
Presented and Co-sponsored by the
Michigan State Medical Society and the American Medical Association
with promotional support from [HEALTHCARE MICHIGAN](#)

February 2, 2017

***ACA & MACRA in the New Political Environment:
How to Thrive in Value-Based Health Care***

What is Likely to Change? What Will Remain the Same?



The next few years will bring significant changes with the transition from fee for service to new value based payment models under Medicare and CHIP Reauthorization Act (MACRA). Success in orienting to new payment models will require changes in how physicians work while continuing to remain patient- centric. The changes will impact physicians in independent small and medium-sized practices differently than employed physicians in larger systems. Drawing on the AMA's STEPSForward program, former **AMA President, J. James Rohack, MD, along with Stacey Hettiger, Director, Medical and Regulatory Policy, at the Michigan State Medical Society**, will provide help and support for physicians moving toward new payment models.

Upon completion of this activity, participants will be able to:

- 1) Discuss the changes in the payment environment moving from volume to value
- 2) Summarize key elements required to thrive under new models
- 3) Identify tools from the AMA and MSMS that help orient physicians to new payment models

**The American Medical Association designates
this live activity for a maximum of
1 AMA PRA Category 1 Credit™**

Location:

Flint Golf Club
3100 Lakewood Drive
Flint, MI 48507

Cost:

- *No Charge for GCMS, MSMS, &/or AMA Member Physicians, Spouses, Practice Managers, & Staff*
- *\$99 for all Non-Member Physicians, Spouses, Practice Managers, & Staff*

6 pm, Registration & Social Hour

6:30 pm, Dinner

7 pm, Meeting

7:15 pm, Presentations

SPACE IS LIMITED. Please register by January 26, 2017.

Email Sherry at ssmith@gcms.org to register your attendance or call 810-733-9923 for more information.

Please mail check payments to:

Genesee County Medical Society, 4438 Oak Bridge Dr., Ste. B, Flint, MI 48532

MACRA, MACRA, MACRA

On Thursday, Feb. 2, the AMA, Michigan State Medical Society, and the Genesee County Medical Society will be holding a special session on MACRA. The primary speaker will be J. James Rohack, MD, Past President of the American Medical Association and cardiologist. He will be speaking from a physician's point of view about MACRA what it means, and how to approach it. Stacey Hettiger, Director of Medical and Regulatory Policy, MSMS, will also be speaking. There is no question, that hassle factors are ever increasing in medicine. When the hassles cannot be blocked or stopped, organize medicine is here to help physicians and their practice managers determine how to negotiate a path. There is no cost to attend this meeting for members of GCMS, MSMS, or AMA. Take advantage of this.



Peter Levine, MPH

On a separate note, GCMS held a practice managers meeting in January on the issue of communications between primary care physicians and specialists. This is a very important issue, especially in light of MACRA, PQRS, and everything else. It directly impacts patient care quality and your bottom line. If your practice managers are not attending these meetings, please ask them to! It is for your own good. If they are attending, it is proof your dues are well spent.

Lastly, the practice managers meeting scheduled for Feb. 23 will revolve around MACRA from a practice manager standpoint. But that doesn't mean they shouldn't attend the meeting on Feb. 2! I look forward to seeing you all there.

Meeting the Health Needs of Genesee County's Children

Child & Adolescent Dentistry

- Dental Exams & Preventive Care
- Dental Treatment & Restorations
- School Screening and Sealant Program
- Infant & Toddler Oral Health Care

Child & Adolescent Health/Psychiatry

- Pediatrics
- Audiology
- Nutrition Education
- Psychiatric Consultation
- Medication Management
- Teen Wellness Center



Mott Children's Health Center
806 Tuuri Place
Flint, Michigan 48503
(810) 767-5750 • fax (810) 768-7511

Do you recognize this
DOCTOR?



Look for the Answer inside!

CLASSIFIEDS

READY TO MOVE IN 4,500 SQ. FT.

Custom designed physician office. Available for rent or purchase in Stone Bridge office complex off Linden Rd. across from Genesee County Medical Society. New roof and heating/cooling.

Contact 810-610-0965

AUTOCLAVE NEEDED

by not-for-profit urgent care center. Please contact Brenda at bcraft@gcms.org or call (810) 232-2710.

PHYSICIANS NEEDED

at the Emergency Medical Center of Flint Various shifts available for part-time, as well. Must be willing to do minor stitches, infants & children, splinting, and minor eye & ear procedures. This is a classic urgent care much like family practice. Hours of operation Mon, Wed: 10am-9pm, Tue, Thur, Fri, Sat: 12pm-9pm, closed on major holidays Located at 2284 S. Ballenger Hwy., Suite 2, Flint, 48503.

Contact Pete Levine at 810-733-9925.

CHECK OUT OUR WEBSITE WWW.GCMS.ORG

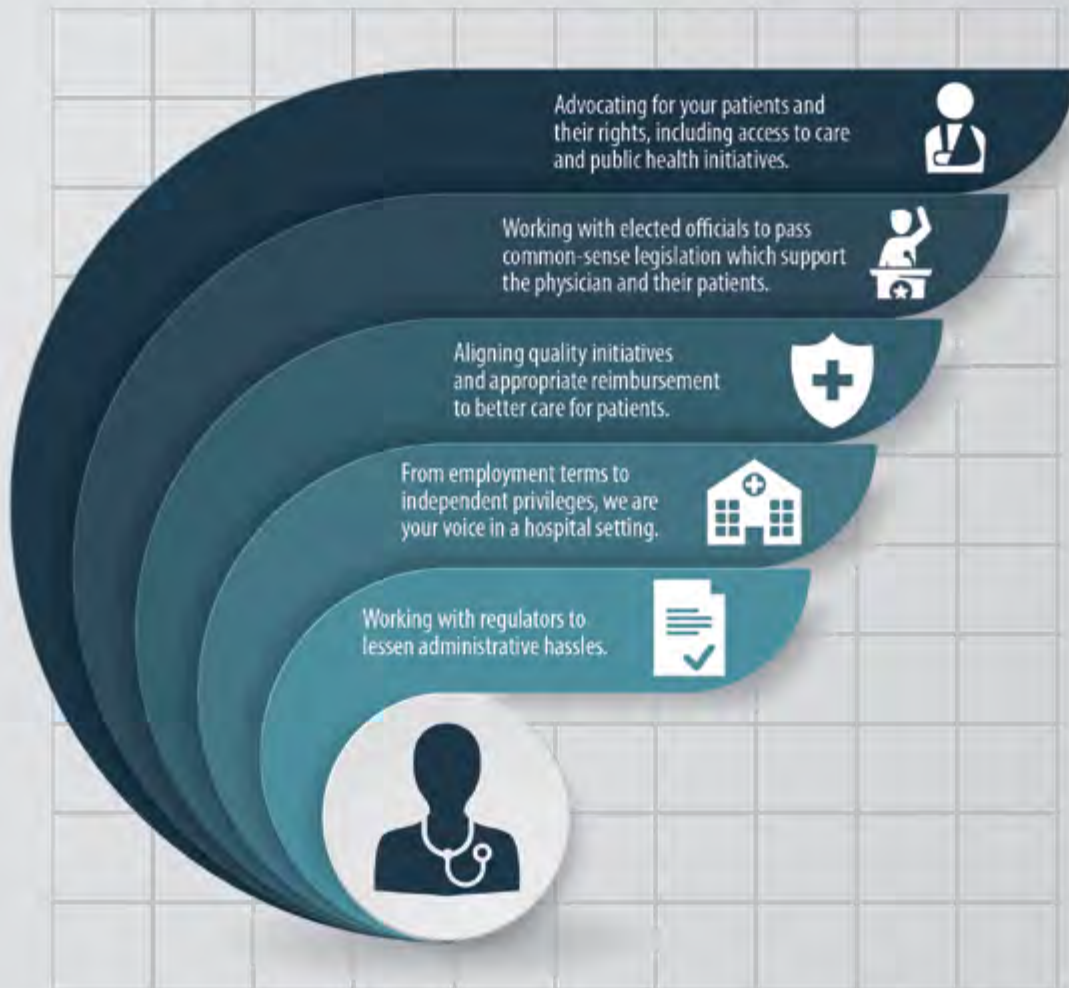
**UPDATE YOUR INFORMATION FOR
THE 2017 GCMS DIRECTORY**

If you have had a change in group, office address, phone fax or email in the past year, please contact Sherry at the GCMS at ssmith@gcms.org so that your updated information can be included in the electronic 2017 Membership Directory.



GENESEE COUNTY MEDICAL SOCIETY & MICHIGAN STATE MEDICAL SOCIETY:

The **ONLY** organizations advocating for **ALL** physicians and their patients.



The Genesee County Medical Society and the Michigan State Medical Society, for more than 150 years, has had a leadership role in Michigan. From standing up for patients' rights to working with lawmakers for sensible legislation to advocating insurance companies to negotiating with hospitals to lessening administrative hassles, GCMS and MSMS are the **ONLY** organizations advocating for **ALL** Michigan physicians.



4438 Oak Bridge Drive, Suite B
Flint, MI 48532
Call: 810-733-9923
Email: plevine@gcms.org
or ssmith@gcms.org



To join the movement, please call 800/352-1351;
email msms@msms.org; or, visit us online at
www.joinmsms.org

The Benefits of Both

- **Marketing Your Practice**
Consultation on what you should be doing to improve your practice and increase new patients.
- **Practice Manager Meetings & Forum**
Monthly meetings and special presentations specifically focused on the needs of a medical practice.
- **Legislative Liaison Committee Meetings**
Special meetings held with local legislators to discuss current legislation issues that affect physicians.
- ***The Bulletin***
Get the latest information from GCMS and Genesee County by reading this monthly e-magazine.
- **Partnerships with Local Charities Supported by Members**
GCMS is involved with non-profit endeavors that our members participate in. We help by donating items, hosting meetings, participating in events, and spreading awareness for their causes.
- **Voice through Committee Leadership and Publishing Opportunities**
Members are encouraged to serve on a variety of committees, including legislative, delegation, medical/legal committees, *The Bulletin*, environmental health, and more.

**Your membership fee covers both organizations -
Are YOU using your benefits?**



GCMS MEMBERSHIP BENEFIT



Flint Golf Club

Established in 1910

September 20, 2016

Dear Genesee County Medical Society Members,

As members of The Genesee County Medical Society, you are guests of an organization that has Dining Member status at Flint Golf Club. Because of this, you and your families are free to enjoy member dining facilities at your leisure in our Oak Room, Grill Room and Patio. Flint Golf Club is excited to have the talents of Chef Alex Fleece, who has New Orleans training, a passion for fresh food, culinary art and buying local. Please call us at 810-743-6100 for reservations. The following are fall dining hours at Flint Golf Club:

Tuesday-Thursday: 11:30am-8:30pm

Friday: 11:30am-9:00pm

Saturday: 5:00pm-9:00pm

Sunday-Monday: Closed

Cash and credit card payments are accepted. We hope you join us and we look forward to you being a part of the Flint Golf Club experience.

Sincerely,

Bethany Herrick
Clubhouse Manager
Flint Golf Club
810-743-6100 ext 205

Phone (810) 743-6100

Fax (810) 743-6951

3100 Lakewood Drive

Flint, MI 48507

HAPPY BIRTHDAY DOCTOR

FEBRUARY

| | | | |
|----------------------------------|----|-------------------------------|----|
| Alvin Judd, MD | 2 | Nelson Schafer, MD | 16 |
| Yaseen Rafee, MD | 2 | Rabbi Salimi, MD | 16 |
| Gul Sachwani-Daswani, DO | 2 | Edward Gomez-Seoane, MD | 16 |
| Diana Khalil, MD | 2 | Amy Wu, MD | 17 |
| Kumbla Bhakta, MD | 3 | Shawn Wiggins, MD | 18 |
| Mark Weiss, MD | 3 | Raymond Rudoni, MD | 19 |
| Cynthia Horning, MD | 3 | Charles Safley, MD | 20 |
| Evelyn Alumit, MD | 5 | Dianne Trudell, MD | 20 |
| Gregory Fortin, MD | 5 | Athear Alrawi, MD | 20 |
| Ahmed Akl, MD | 5 | Richard Hennig, DO | 21 |
| Seth Bernard, DO | 5 | Daniel Bernstein, MD | 22 |
| Bradford Murphy, DO | 6 | Steven Boskovich, MD | 22 |
| Virgil Hooper, MD | 8 | Ali Esfahani, MD | 24 |
| Avery Jackson, III, MD | 9 | Laura Carravallah, MD | 24 |
| Frederick Lim, MD | 12 | Pino Colone, MD | 26 |
| Gregorio Imperial, Jr., MD | 12 | Omar Gayar, MD | 26 |
| Jay Holmes, MD | 12 | Samuel DeNardo, MD | 27 |
| Sharon Dowd, MD | 14 | Thomas Wright, DO | 27 |
| Maurice Chapin, MD | 15 | Wilfredo Rivera, MD | 28 |
| Rajeevi Pandyan, MD | 15 | Mark Anderson, MD | 28 |
| Jami Foreback, MD | 15 | Mohammad Tabbah, MD | 28 |

We place your interests first and strive for your success and satisfaction above all.

Trust us to provide payment solutions to your payment challenges.

810.750.6822

mktg@TheRybarGroup.com

www.TheRybarGroup.com

THE
RYBAR
GROUP

HEALTHCARE FINANCIAL CONSULTANTS

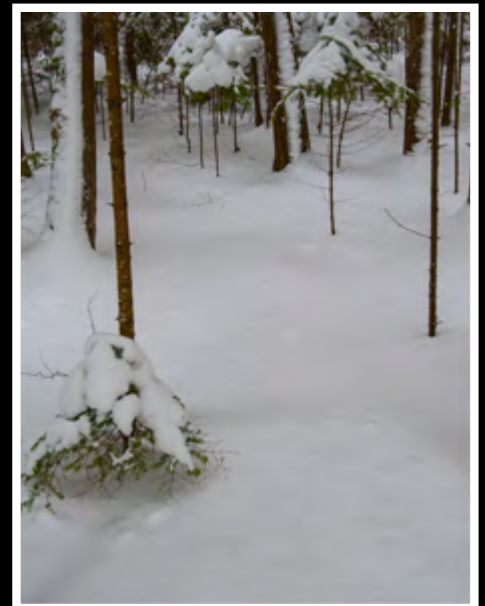




PHOTO *Gallery*

COURTESY OF

Cyrus Farreh, MD



GCMS MEETINGS

— February 2017 —

C-Section Task Force, 2/1

6pm, GCMS Office

MACRA Town Hall, 2/2

6pm, Flint Golf Club

Legislative Liaison Committee, 2/6

8:00am, GCMS Office

Community & Environmental

Health Committee, 2/15

12:30pm, GCMS Office

2017 Ball Committee, TBD

Practice Managers, 2/23

8:00am, GCMS Office

MSF Fundraising Committee, 2/23

6pm, GCMS Office

Finance Committee, 2/28

5:15pm, GCMS Office

Board of Directors, 2/28

6pm, GCMS Office



Banking Services for Educational and Healthcare Employees and Their Families!

Our members provide high quality educational services and exceptional healthcare to our community. We help them keep more of their hard earned money! As a member of FASECU you can expect:

- No monthly account fees.
- Personalized service.
- Low fixed interest rate loans for any purpose.
- Refinance options for your current loans to lower your interest rate or payment, or to consolidate high interest rate debt.
- Access to a nationwide network of 30,000 surcharge free ATMs.
- Online banking and mobile banking (app for smartphone and tablet).



Opening an account is easy!

Call a Member Services Representative at:

(800) 369-2786, (810) 720-8300 or (810) 664-5351

Open your account online at: www.fasecu.org

Visit one of our offices:

Main Office

4411 Calkins Rd.
Flint, MI 48532

Branch Office

5399 E. Court St. N.
Burton, MI 48509

Branch Office

1005 University Ave.
Flint, MI 48504

Branch Office

3400 Regency Park Dr.
Grand Blanc, MI 48439

Branch Office

168 N. Saginaw St.
Lapeer, MI 48446



Federally Insured by
NCUA



36TH
HURLEY FOUNDATION
MOTOWN

BENEFIT BALL

#THISisHurley



**SAVE
THE
DATE**

**SATURDAY, MARCH 4, 2017 AT 6PM
HOLIDAY INN GATEWAY CENTRE
FLINT, MICH.**

For tickets or sponsorship information, please contact:
Elizabeth Wenstrom Williams | 810.262.7005 | ewillia4@hurleymc.com

Did you recognize...
Ahmed Akl, MD



Announcement

GCMS members now entitled to a 15% discount on automobile and homeowners insurance.

For details, contact:

POTTER & ROOSE INSURANCE

810-767-8590

Providers of insurance for the GCMS & its members for 50 years.

906 Mott Foundation Bld., Flint MI 48502

YOUR \$\$\$ AT WORK

- GCMS helped multiple practices with payer issues
- GCMS planned MACRA Town Hall session with AMA and MSMS
- GCMS planned Practice Managers Meeting on Primary and Specialists Communications
- GCMS planned Practice Managers Meeting on MACRA
- GCMS continued efforts to update physician contact data for public health communication and membership purposes



4438 Oak Bridge Drive - Suite B - Flint, Michigan 48532

www.gcms.org

Bulletin Committee

(Gathers information for month publication)

Meetings held 1st Wednesday of each month, 7:30am, Rapport Conference Room at GCMS office.

Community & Environmental Health Committee

(Promotes health in the community & environment)

Meetings held 4th Wednesday of each month, 12:30pm, Rapport Conference Room at GCMS office.

Legislative Liaison Committee

(Communicates with Legislators)

Meetings held 1st Monday of most months, Rapport Conference Room at GCMS office.

Constitution & Bylaws Committee

(Reviews & updates the Constitution and Bylaws)

Meetings scheduled as needed.

Mediation Committee

(Subcommittee of Peer Review, deals with complaints)

Meetings scheduled as needed.

PRESCRIPTION

for health

COMMIT TO FIT!

EXERCISE
IS THE BEST
MEDICINE



**Free Fitness Trackers
and Exercise Information
for YOUR Patients.**

Contact *Commit to Fit!* for more information
at commit2fit@flint.org or 810.232.2228.

commit2fit.com

February 2017 CALENDAR
FREE! Commit to Fit! Class Schedule

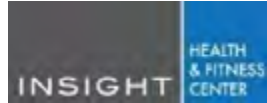
Class Descriptions & Locations

Basic Yoga (1 hour)

This class is a balanced flow of postures designed to build stamina, strength, and flexibility while promoting weight loss and general stress relief.

Insight Health & Fitness Center (IHFC)

Formerly Hurley Health & Fitness Center
4500 S. Saginaw St
Flint, MI 48507
(810) 893-6489



Zumba Gold (1 hour) - A less intense version of the classic Zumba. This class offers fun music to keep the excitement high while keeping the impact low.

Genesys Athletic Club (GAC)

801 Health Park Blvd
Grand Blanc, MI 48439
(810) 606-7300



New Year, New You! 2017 Challenge

Challenge Goal for Participants:

Earn 3,000 Total Wellness Points

How to Participate

Join the Challenge at commit2fit.com to get started! Beginning January 1st, track your activities on commit2fit.com, the Commit to Fit! mobile app, or by syncing your fitness apps/devices. Incentives and Prizes! The Commit to Fit! New Year, New You! Challenge is an eight week individual challenge to encourage individuals to practice daily activities to be more active, eat healthier, and promote wellness to others.

Overall Wellness Score Drawing

Each participant who reaches the eight-week goal of 3,000 Total Wellness Points will be entered into a drawing to win a prize.

How to Participate

Join the Challenge at commit2fit.com to get started! Beginning January 1st, track your activities on commit2fit.com, the app, or by syncing your wearable fitness device online!



MIC-6C3

**Questions?
Email
commit2fit@flint.org**

Zumba – This class offers fun music to keep the excitement high while keeping the impact low
Friday's 5:30-6:30pm in ADR.
January 4th- April 28th 2017

Aquafitness- An invigorating water workout. Ideal for all fitness levels. No swimming required



Enhance Fitness (1 hour) – A fun, energizing class geared toward improving overall functioning and well-being. Improve your cardiovascular fitness, strength, flexibility and balance!

TIMES & LOCATIONS:

Hasselbring Senior Center

1002 Home Ave. Flint, MI
(810) 766-7128 Mon, Weds, & Fri 9-10 am



Carriage Town Ministries 605 Garland St Flint, MI
Tuesday 2:30-3:30 pm

Flint Farmers' Market- Tuesdays &

Thursdays 10:00-11:00 am
300 E. First St Flint, MI
(810) 232-1399



Senior Stretch (1 hour) - This class will help improve overall strength and flexibility. The class is led by a certified senior fitness instructor who will guide you through the exercises at your own pace. This class is perfect for all ability levels.

YMCA Downtown Flint

411 E. 3rd Street
Flint, MI 48503
(810) 232-9622



commit2fit.com

February 2017 CALENDAR

FREE! Commit to Fit! Class Schedule

Commit to Fit offers fitness classes at **no cost** to all individuals who live or work in Flint and Genesee County. Fitness Centers require participants to be age 18 and older, other locations are open to all ages. See back side for details. [Click HERE to Access the](#)

Nutrition Education & Resources Calendar

| | MONDAY | TUESDAY | WEDNESDAY | THURSDAY | FRIDAY | SATURDAY |
|--|---|---|---|--|--|----------|
| | | | 1 Enhance Fitness Hasselbring Senior Center 9:00 a.m. | 2 Enhance Fitness Flint Farmers' Market 10:00 a.m. Basic Yoga IHFC 6:45 p.m. | 3 Enhance Fitness Hasselbring Senior Center 9:00 a.m. Zumba® U of M-Flint 5:30-6:30pm | 4 |
| | 6 Enhance Fitness Hasselbring Senior Center 9:00 a.m. Senior Stretch YMCA Downtown 10:00 Aqua Fitness U of M-Flint Rec Center 5:30-6:30 pm | 7 Enhance Fitness Flint Farmers' Market 10:00 a.m. | 8 Enhance Fitness Hasselbring Senior Center 9:00 a.m. Zumba Gold (Beginner) GAC 5:30 p.m. | 9 Enhance Fitness Flint Farmers' Market 10:00 a.m. Basic Yoga IHFC 6:45 p.m. | 10 Enhance Fitness Hasselbring Senior Center 9:00 a.m. Zumba® U of M-Flint 5:30-6:30pm | 11 |
| | 13 Enhance Fitness Hasselbring Senior Center 9:00 a.m. Senior Stretch YMCA Downtown 10:00 a.m. Aqua Fitness U of M-Flint 5:30pm | 14 Enhance Fitness Flint Farmers' Market 10:00 a.m. | 15 Enhance Fitness Hasselbring Senior Center 9:00 a.m. Zumba Gold (Beginner) GAC 5:30 p.m. | 16 Enhance Fitness Flint Farmers' Market 10:00 a.m. Basic Yoga IHFC 6:45 p.m. | 17 Enhance Fitness Hasselbring Senior Center 9:00 a.m. Zumba® U of M-Flint 5:30-6:30pm | 18 |
| | 20 Enhance Fitness Hasselbring Senior Center 9:00 a.m. Senior Stretch YMCA Downtown- 10:00 Aqua Fitness U of M-Flint Rec Center 5:30-6:30 pm | 21 Enhance Fitness Flint Farmers' Market 10:00 a.m. | 22 Enhance Fitness Hasselbring Senior Center 9:00 a.m. Zumba Gold (Beginner) GAC 5:30 p.m. | 23 Enhance Fitness Flint Farmers' Market 10:00 a.m. Basic Yoga IHFC 6:45 p.m. | 24 Enhance Fitness Hasselbring Senior Center 9:00 a.m. Zumba® U of M-Flint 5:30-6:30pm | 25 |
| | 27 Enhance Fitness Hasselbring Senior Center 9:00 a.m. Senior Stretch YMCA 10:00 am Aqua Fitness U of M-Flint Rec Center 5:30-6:30 pm | 28 Enhance Fitness Flint Farmers' Market 10:00 a.m. | | | | |

FEBRUARY 2017

Issues of Serious Concern for Medical Practices!

Don't let your practice manager miss these important meetings!



Held 4th Thursday of each month from 8am to 10am.

The following topics are tentatively scheduled and subject to change

February Topic:

MACRA Update

March Topic:

TBD

Light breakfast available – coffee, tea, yogurt, fruit cups and granola bars

**Genesee County Medical Society | Rapport Conference Room
4438 Oak Bridge Drive, Suite B | Flint, MI 48532**

Genesee County Medical Society
Board of Directors
October 25, 2016- Minutes

I. Call to Order

The meeting was called to order in the Rapport Conference Room at 6:00pm, by Pino Colone, MD, President.

II. Review of Minutes

Motion: **that the minutes of September 27, 2016, Board of Directors meeting be approved as presented. The motion carried.**

III. Reports

A) Community & Environmental Health

1. Update on Position Regarding Chelation

Dr. Gerald Natzke noted that the Committee is in conversation with two key researchers, regarding a research study involving chelation. The Columbia University individuals have agreed to provide their expertise to the project. The Committee is still considering using x-ray fluorescence to determine lead levels.

2. Timely and Transparent Data Sharing – Resolution Adoption

Peter Levine reported the Board of Directors of the Greater Flint Health Coalition adopted the GCMS resolution on timely public health information.

B) Finance

1. Budget-to-Actual Report, Period ending September 30, 2016

Motion: **that the budget to actual report for the period ending September 30, 2016, be approved as presented. The motion carried.**

2. Update on Wayne State University Contract

Peter Levine reported that the small Wayne State University contract has been signed, but the major contract has not been received yet for review and signature. Consequently, staff could not prepare a budget for review by the Finance Committee and the Board.

Dr. Waters noted that the Finance Committee will review the budget when the contract is received, and submit it to the Executive Committee for approval.

3. MSF Fundraising Committee Report

Dr. Waters reported that there has been some progress on fundraising, but it has been relatively minor.

C) Legislative Liaison

Dr. Cathy Blight reviewed the letter sent to Senator Ananich supporting his legislation on lead in drinking water.

Dr. Blight reviewed the MDPAC Genesee County 2017 endorsements. She also noted that AMAPAC has endorsed Dan Kildee for Congress.

Dr. Blight noted that Senator Dave Robertson, from the Grand Blanc area, has been very courageous in his vote on the nurse anesthetist bill. She encouraged Board members to thank him when they see him.

Genesee County Medical Society
Board of Directors
October 25, 2016- Minutes

D) Greater Flint Health Coalition

Dr. John Waters noted that the GCMS resolution on Timely Public Health Information was passed unanimously. He also noted that GCMS has hosted meetings with all four levels of governments on Shigella.

E) District Directors

Dr. Waters reported MSMS is working re-orienting the Michigan State Medical Society for the future.

F) Other Business

Peter Levine reported that the AMA's final MACRA analysis has been included in each meeting packet. He also reported the AMA, MSMS, and GCMS will hold a Town Hall on February 2 on the MACRA issue. It will feature a Past President of AMA and Stacey Hettiger from MSMS.

Levine reported on the Crim Mindfulness Sessions featuring John Cabot Zinn. Over 2,000 community members attended the various sessions. The event held for healthcare professionals had over 200 people in attendance. He expressed appreciation to the Crim Foundation for inviting the Medical Society to participate.

Dr. Colone reviewed the letter sent to the Michigan State Medical Society, Pennsylvania Medical Society, American Board of Medical Specialties, American Board of Internal Medicine, Hurley Medical Center and Genesys Medical Center regarding the GCMS Board of Director's maintenance of certification vote of no-confidence.

Motion: **that the Genesee County Medical Society offer the members a new member benefit: Flint Golf Club Dining Member Status. Staff will send out an email blast and place a notice in the Bulletin about the new member benefit. The motion carried.**

Dr. Cathy Blight expressed the appreciation of the Board to Dr. Pino Colone on his year of presidency. She complimented him on keeping the organization steady and on track despite the rockiness of the financial situation and the complexity of the political situation. She said It was a good year, but a complicated one. Dr. Colone thanked the board for its support.

IV. Next Meeting

It was noted that the November meeting of the Board of Directors would be a few days after the President's Ball, and two days before Thanksgiving.

Motion: **that the November meeting and the December meeting of the Genesee County Medical Society Board of Directors be recessed. The motion carried.**

The next meeting will take place on January 24, 2017.

V. Adjournment

No further business appearing, the meeting was adjourned at 7:30pm.

Respectfully submitted
Peter Levine, MPH
Executive Director

HEALTHCARE MICHIGAN



Keeping healthcare professionals informed about the health care landscape in Michigan.

SUBSCRIBE TODAY!

healthcaremichigan.com

HURLEY MEDICAL CENTER PEDIATRIC ONCOLOGY UNIT

Coordinated Care, Close to Home

KH was a 12-year-old girl living in Ontario, Canada with her father. Her parents were divorced and her mother moved to Pinconning, Michigan. KH was diagnosed with cerebellar Medulloblastoma in 2011. She received her brain radiation at Victoria Children's Hospital and needed to start chemotherapy. It was agreed that her mother in Michigan could provide the most supportive care throughout her treatment so KH moved to Pinconning. She was registered on the Children's Oncology Group (COG) Protocol and that is how she came to be treated at Hurley Medical Center and counseled periodically by a child psychologist. KH received the same level of quality care much closer to her new home.

hurleychildrens.com



A Genesee County Medical Society Town Hall Meeting Presented and Co-sponsored by the Michigan State Medical Society and the American Medical Association with promotional support from HEALTHCARE MICHIGAN

ACA & MACRA in the New Political Environment:

How to Thrive in Value-Based Health Care

What is Likely to Change? What Will Remain the Same?

FEBRUARY 2, 2017

6 pm, Registration & Social Hour

6:30 pm, Dinner | 7 pm, Meeting | 7:15 pm, Presentations



Drawing on the AMA's STEPSForward program, former AMA President, J. James Rohack, MD, along with Stacey Hettiger, Director, Medical and Regulatory Policy, at the Michigan State Medical Society, will provide help and support for physicians moving toward new payment models.



Location:

Flint Golf Club - 3100 Lakewood Drive, Flint, MI 48507

Cost:

- No Charge for GCMS, MSMS, &/or AMA Member Physicians, Spouses, Practice Managers, & Staff
- \$99 for all Non-Member Physicians, Spouses, Practice Managers & Staff

SPACE IS LIMITED. Please register by January 26, 2017.

Email Sherry at ssmith@gcms.org to register your attendance or call 810-733-9923 for more information.

Please direct patients to flintcares.com for the latest information regarding Flint water issues



TRUST EXPERIENCE. COUNT ON COMMITMENT.



Corporate | Business Law | Real Estate
Wills & Trusts | Probate | Licensing | Litigation
Mediation | Personal Injury | Malpractice

Walter P. Griffin | Timothy H. Knecht | Jose' T. Brown | J. Brian MacDonald
Barbara J. Hunyady | Erica L. Berezny | Megan R. Mulder | Brandon K. Wagner

Attorneys at Law | Since 1928 | www.cglawyers.com | 810.232.3141

UPDATE YOUR INFORMATION FOR THE 2017 GCMS DIRECTORY

If you have had a change in group, office address, phone fax or email in the past year, please contact Sherry at the GCMS at ssmith@gcms.org so that your updated information can be included in the electronic 2017 Membership Directory.



A Genesee County Medical Society Town Hall Meeting
Presented and Co-sponsored by the
Michigan State Medical Society and the American Medical Association
with promotional support from [HEALTHCARE MICHIGAN](#)

February 2, 2017

***ACA & MACRA in the New Political Environment:
How to Thrive in Value-Based Health Care***

What is Likely to Change? What Will Remain the Same?



The next few years will bring significant changes with the transition from fee for service to new value based payment models under Medicare and CHIP Reauthorization Act (MACRA). Success in orienting to new payment models will require changes in how physicians work while continuing to remain patient- centric. The changes will impact physicians in independent small and medium-sized practices differently than employed physicians in larger systems. Drawing on the AMA's STEPSForward program, former **AMA President, J. James Rohack, MD, along with Stacey Hettiger, Director, Medical and Regulatory Policy, at the Michigan State Medical Society**, will provide help and support for physicians moving toward new payment models.

Upon completion of this activity, participants will be able to:

- 1) Discuss the changes in the payment environment moving from volume to value
- 2) Summarize key elements required to thrive under new models
- 3) Identify tools from the AMA and MSMS that help orient physicians to new payment models

**The American Medical Association designates
this live activity for a maximum of
1 AMA PRA Category 1 Credit™**

Location:

**Flint Golf Club
3100 Lakewood Drive
Flint, MI 48507**

Cost:

- **No Charge for GCMS, MSMS, &/or AMA Member Physicians, Spouses, Practice Managers, & Staff**
- **\$99 for all Non-Member Physicians, Spouses, Practice Managers, & Staff**

6 pm, Registration & Social Hour

6:30 pm, Dinner

7 pm, Meeting

7:15 pm, Presentations

SPACE IS LIMITED. Please register by January 26, 2017.

Email Sherry at ssmith@gcms.org to register your attendance or call 810-733-9923 for more information.

Please mail check payments to:

Genesee County Medical Society, 4438 Oak Bridge Dr., Ste. B, Flint, MI 48532

